

QUINCY, ILLINOIS

AL-862 (FAA)

VORTAC UIN 113.6 Chan 83	APP CRS 029°	Rwy Idg 7098 TDZE 760 Apt Elev 769
--	------------------------	---

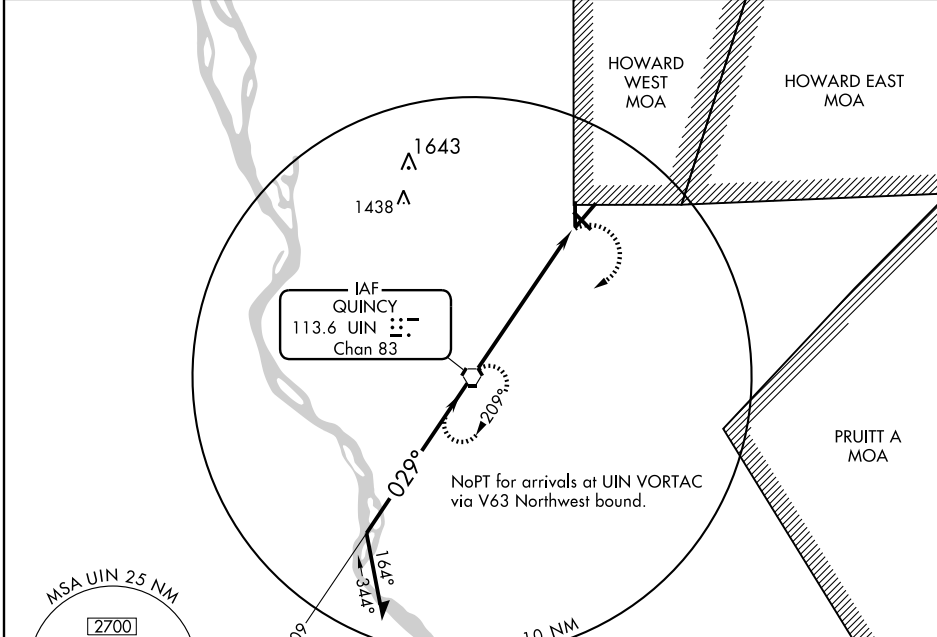
VOR RWY 4

QUINCY RGNL-BALDWIN FIELD (UIN)

⚠ When local altimeter setting not received, use Pittsfield altimeter setting and increase all MDA 80 feet. Increase S-4 Cat. C, D visibility ¼ mile. VDP NA when using Pittsfield altimeter setting.

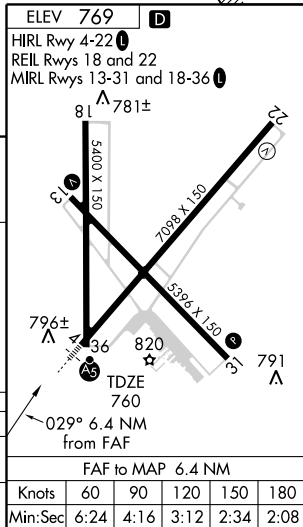
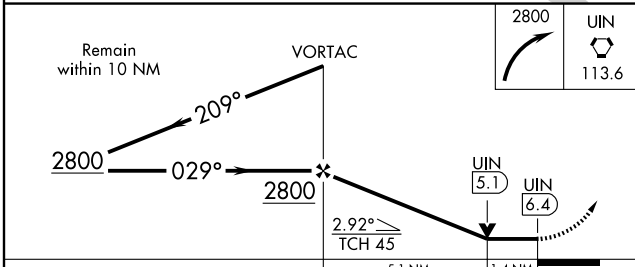
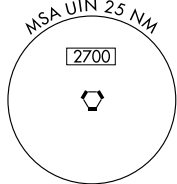
MALS MISSED APPROACH: Climbing right turn to 2800 direct UIN VORTAC and hold.

ASOS 121.425	KANSAS CITY CENTER 135.525 319.9	UNICOM 123.0 (CTAF) Ⓛ
------------------------	--	---------------------------------



EC-3, 22 OCT 2009 to 19 NOV 2009

EC-3, 22 OCT 2009 to 19 NOV 2009



CATEGORY	A	B	C	D
S-4	1240-½ 480 (500-½)		1240-¾ 480 (500-¾)	1240-1 480 (500-1)
CIRCLING	1240-1 471 (500-1)		1240-1½ 471 (500-1½)	1320-2 551 (600-2)

Knots	60	90	120	150	180
Min:Sec	6:24	4:16	3:12	2:34	2:08

QUINCY, ILLINOIS
Amdt 12 09015

39° 57'N-91° 12'W

QUINCY RGNL-BALDWIN FIELD (UIN)
VOR RWY 4