

QUINCY, ILLINOIS

AL-862 (FAA)

RNAV (GPS) RWY 36

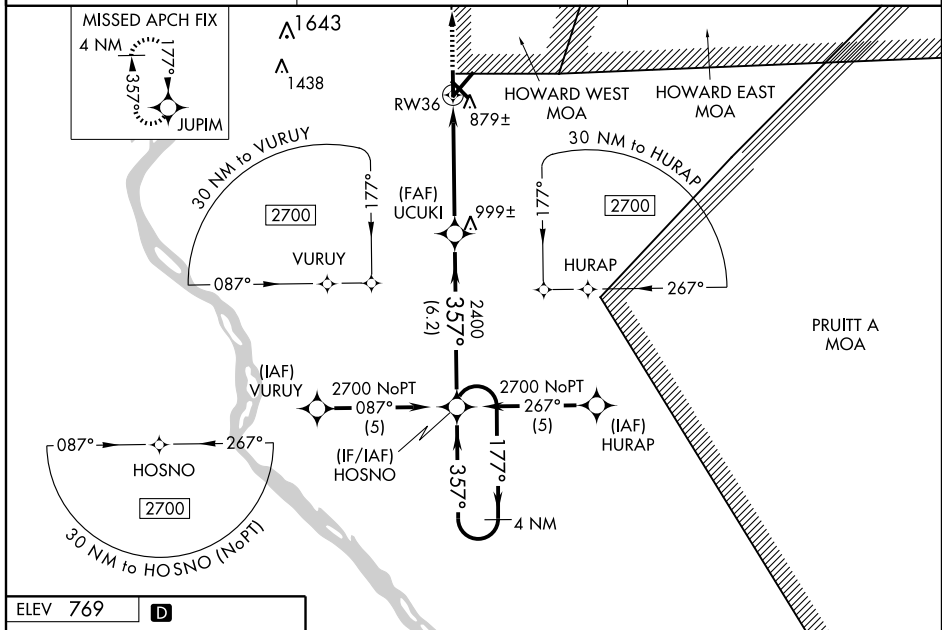
QUINCY RGNL-BALDWIN FIELD (UIN)

WAAS CH 97610 W36A	APP CRS 357°	Rwy Idg TDZE Apt Elev	5400 759 769
--	------------------------	-----------------------------	---

For uncompensated Baro-VNAV systems, LNAV/VNAV NA below -16° C (4° F) or above 47° C (116° F). DME/DME RNP-0.3 NA. Visibility reduction by helicopters NA. When local altimeter setting not received, use Pittsfield altimeter setting and increase all DA 70 feet and all MDA 80 feet. Increase LPV and LNAV/VNAV visibility all Cats. ¼ mile. Increase LNAV visibility Cat. C, D ½ mile. VDP and Baro-VNAV NA when using Pittsfield altimeter setting.

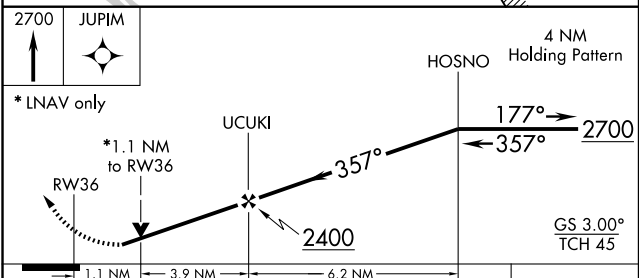
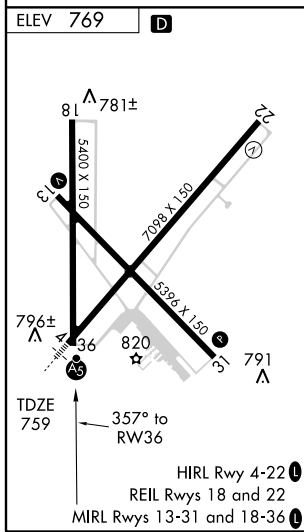
MISSED APPROACH:
Climb to 2700 direct JUPIM and hold.

ASOS 121.425	KANSAS CITY CENTER 135.525 319.9	UNICOM 123.0 (CTAF) 0
------------------------	--	---------------------------------



EC-3, 22 OCT 2009 to 19 NOV 2009

EC-3, 22 OCT 2009 to 19 NOV 2009



CATEGORY	A	B	C	D
LPV DA	1073-1		314 (400-1)	
LNAV/VNAV DA	1181-1½		422 (500-1½)	
LNAV MDA	1140-1		381 (400-1)	
CIRCLING	1180-1 411 (500-1)	1220-1 451 (500-1)	1220-1½ 451 (500-1½)	1320-2 551 (600-2)

QUINCY, ILLINOIS
Orig 09015

39°57'N - 91°12'W

RNAV (GPS) RWY 36