

RNAV (GPS) RWY 22

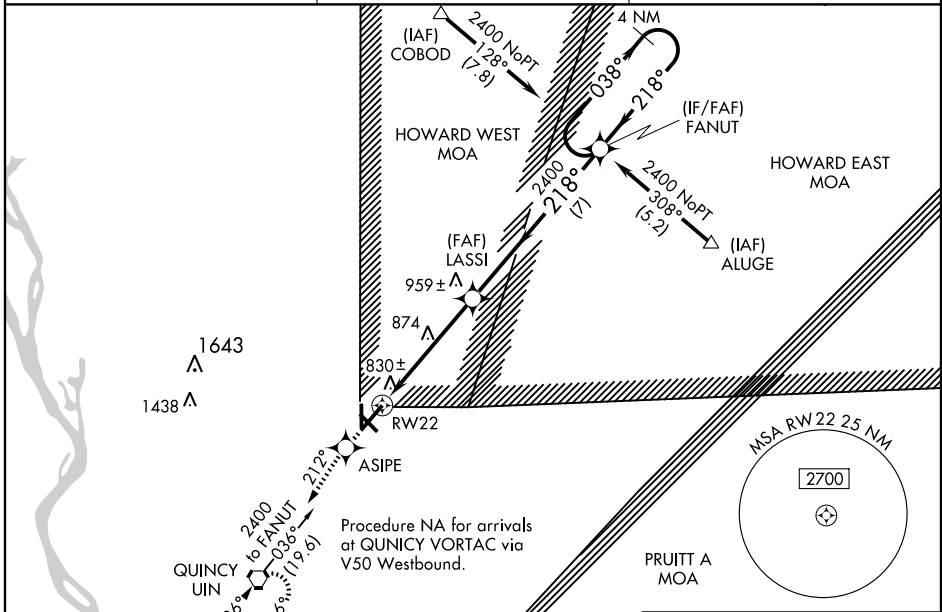
QUINCY RGNL-BALDWIN FIELD (UIN)

WAAS CH 45705 W22A	APP CRS 218°	Rwy Idg TDZE Apt Elev	7098 749 768
----------------------------------------	------------------------	-----------------------------	-----------------------------------------

Baro-VNAV NA when using Pittsfield altimeter setting. For uncompensated Baro-VNAV systems, procedure NA below -16° C (4° F) or above 47° C (116° F). DME/DME RNP-0.3 NA. VDP NA when using Pittsfield altimeter setting. If local altimeter setting not received, use Pittsfield altimeter setting and increase all DAs 70 feet and all MDAs 80 feet.

MISSED APPROACH: Climb to 2400 direct ASIPE and via 212° track to UIN VORTAC and hold.

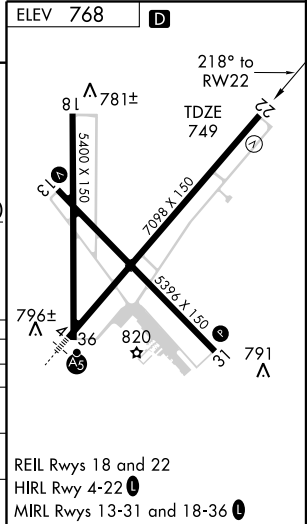
ASOS 121.425	KANSAS CITY CENTER 135.525 319.9	UNICOM 123.0 (CTAF) 0
------------------------	--------------------------------------------	---------------------------------



EC-3, 22 OCT 2009 to 19 NOV 2009

EC-3, 22 OCT 2009 to 19 NOV 2009

2400	ASIPE	212° TRK	UIN	
*LNAV only		LASSI	FANUT	
*1.1 NM to RW22		218°		038° → 2400
RW22		2400		GS 3.00° TCH 43
CATEGORY	A	B	C	D
LPV DA	999-1		250 (300-1)	
LNAV/VNAV DA	1161-1½		412 (400-1½)	
LNAV MDA	1140-1		391 (400-1)	
CIRCLING	1200-1 432 (500-1)	1220-1 452 (500-1)	1220-1½ 452 (500-1½)	1320-2 552 (600-2)



REIL Rwy 18 and 22
HIRL Rwy 4-22 0
MIRL Rwy 13-31 and 18-36 0