

# RNAV (GPS) RWY 13

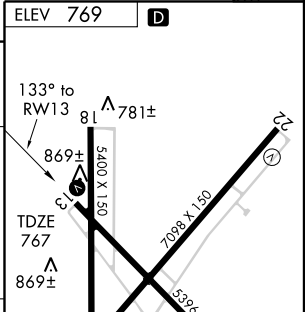
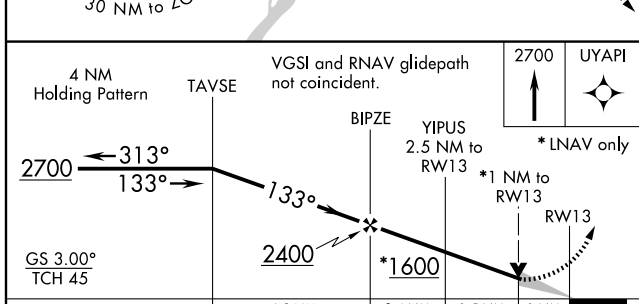
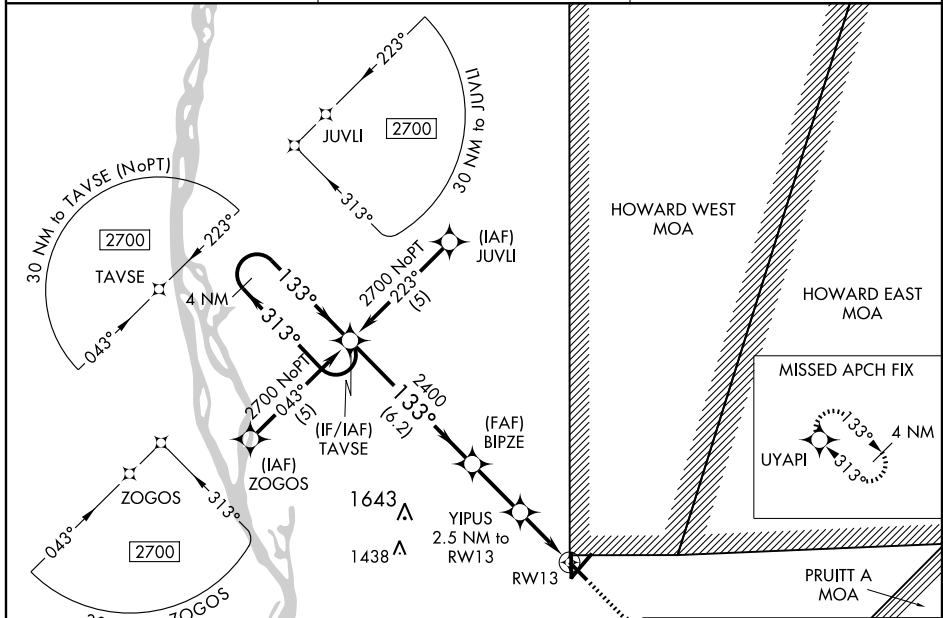
QUINCY RGNL-BALDWIN FIELD (UIN)

WAAS CH <b>65910</b> <b>W13A</b>	APP CRS <b>133°</b>	Rwy Idg <b>5123</b> TDZE <b>767</b> Apt Elev <b>769</b>
--	------------------------	---

▼ For uncompensated Baro-VNAV systems, LNAV/VNAV NA below -16° C (4° F) or above 47° C (116° F). DME/DME RNP-0.3 NA. When local altimeter setting not received, use Pittsfield altimeter setting and increase all DA 70 feet and all MDA 80 feet. Increase LPV and LNAV/VNAV visibility all Cats. ¼ mile. Increase LNAV visibility Cat. C, D ½ mile. VDP and Baro-VNAV NA when using Pittsfield altimeter setting.

MISSED APPROACH:  
Climb to 2700 direct UYAPI and hold.

ASOS <b>121.425</b>	KANSAS CITY CENTER <b>135.525 319.9</b>	UNICOM <b>123.0 (CTAF)</b>
------------------------	--	-------------------------------



CATEGORY	A	B	C	D
LPV DA		1116-1¼	349 (400-1¼)	
LNAV/ VNAV DA		1139-1¼	372 (400-1¼)	
LNAV MDA	1120-1	353 (400-1)		1120-1¼ 353 (400-1¼)
CIRCLING	1180-1 411 (500-1)	1220-1 451 (500-1)	1220-1½ 451 (500-1½)	1320-2 551 (600-2)

REIL Rwy 18 and 22  
HIRL Rwy 4-22  
MIRL Rwy 13-31 and 18-36

EC-3, 22 OCT 2009 to 19 NOV 2009

EC-3, 22 OCT 2009 to 19 NOV 2009