

QUINCY, ILLINOIS

AL-862 (FAA)

LOC/DME BC RWY 22

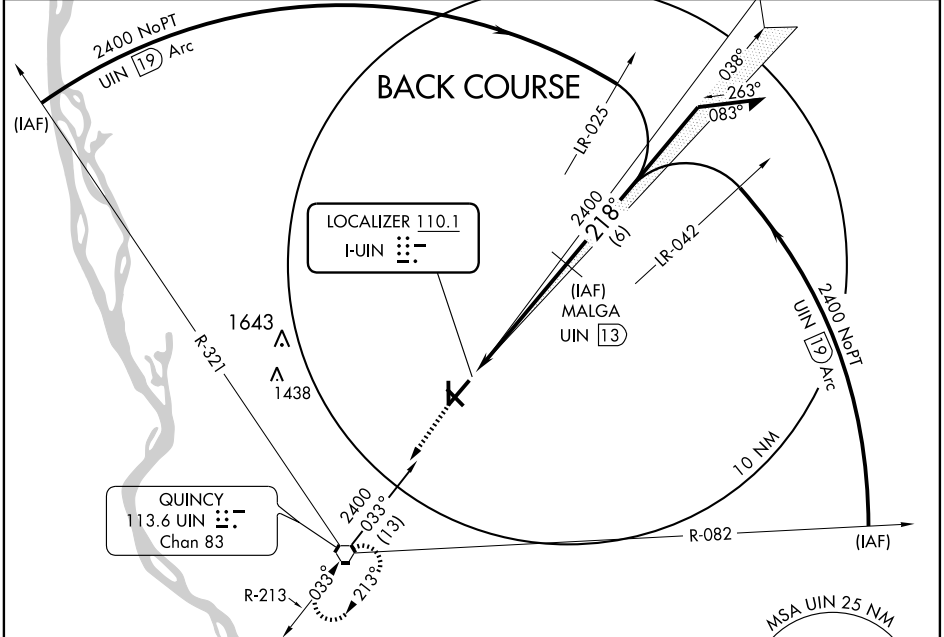
QUINCY RGNL-BALDWIN FIELD (UIN)

LOC I-UIN 110.1	APP CRS 218°	Rwy Idg TDZE Apt Elev	7098 749 769
---------------------------	------------------------	-----------------------------	---

Simultaneous reception of I-UIN and UIN DME Required.
DME from UIN VORTAC.

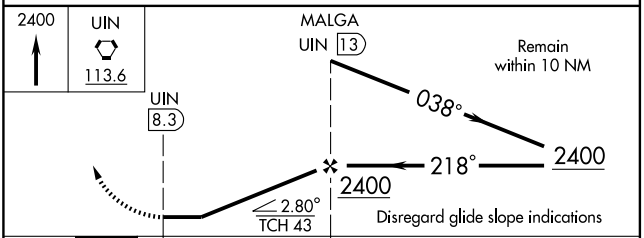
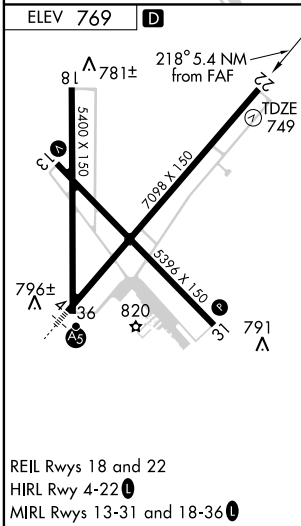
MISSED APPROACH: Climb to 2400
direct UIN VORTAC and hold.

ASOS 121.425	KANSAS CITY CENTER 135.525 319.9	UNICOM 123.0 (CTAF)
------------------------	--	-------------------------------



EC-3, 22 OCT 2009 to 19 NOV 2009

EC-3, 22 OCT 2009 to 19 NOV 2009



CATEGORY	A	B	C	D
S-22	1140-1 391 (400-1)			1140-1¼ 391 (400-1¼)
CIRCLING	1200-1 431 (500-1)	1220-1 451 (500-1)	1220-1½ 451 (500-1½)	1320-2 551 (600-2)

QUINCY, ILLINOIS
Amdt 6A 08297

39°57'N-91°12'W

QUINCY RGNL-BALDWIN FIELD (UIN)

LOC/DME BC RWY 22