

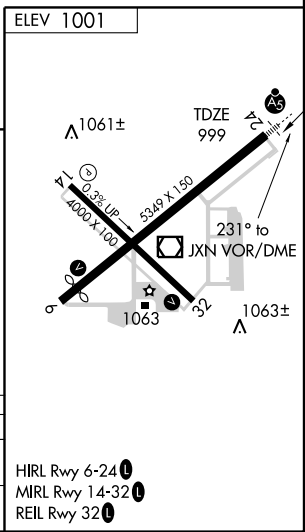
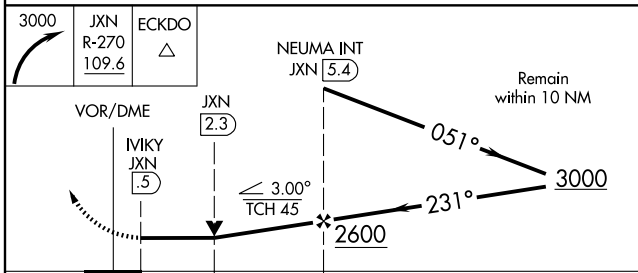
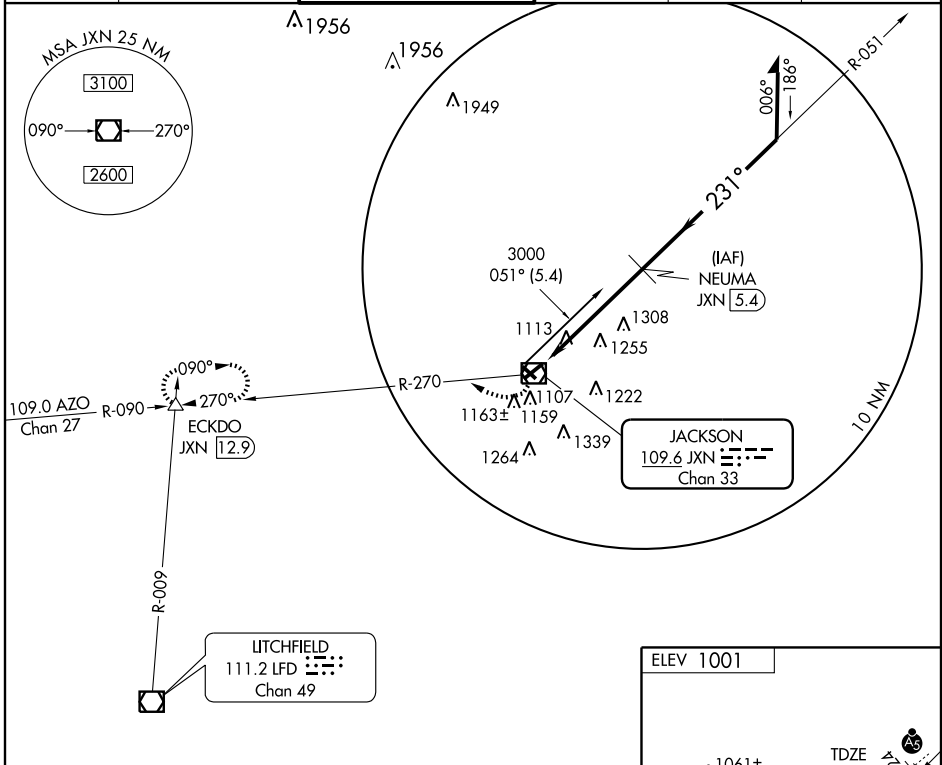
VOR/DME JXN <b>109.6</b> Chan 33	APP CRS <b>231°</b>	Rwy Idg TDZE Apt Elev	<b>5349</b> <b>999</b> <b>1001</b>
--	------------------------	-----------------------------	--

# VOR/DME RWY 24

JACKSON COUNTY-REYNOLDS FIELD (JXN)

<b>▽</b> When local altimeter setting not received, use Mason altimeter setting and increase all MDA 60 feet, increase all Cat C/D visibilities ¼ mile. VDP NA when using Mason altimeter setting.	<b>⚠</b> MALSR	MISSED APPROACH: Climbing right turn to 3000 via JXN R-270 to ECKDO Int/JXN 12.9 DME and hold.
--	----------------	--

ATIS <b>125.725</b>	LANSING APP CON <b>127.3 357.6</b>	JACKSON TOWER* <b>128.475 (CTAF) 0 257.8</b>	GND CON <b>121.9</b>	CLNC DEL <b>121.9</b>	UNICOM <b>122.95</b>
------------------------	---------------------------------------	---	-------------------------	--------------------------	-------------------------



CATEGORY	A	B	C	D
S-24	1620-½ 621 (700-½)		1620-1¼ 621 (700-1¼)	1620-1½ 621 (700-1½)
CIRCLING	1620-1 619 (700-1)		1620-1¾ 619 (700-1¾)	1640-2 639 (700-2)

EC-1, 22 OCT 2009 to 19 NOV 2009

EC-1, 22 OCT 2009 to 19 NOV 2009

HIRL Rwy 6-24  
MIRL Rwy 14-32  
REIL Rwy 32