

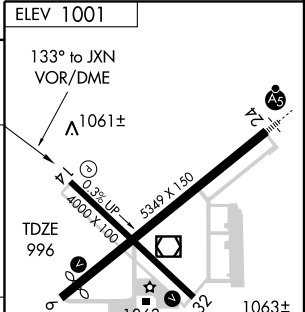
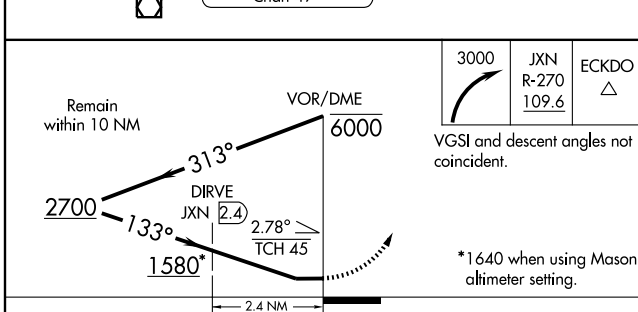
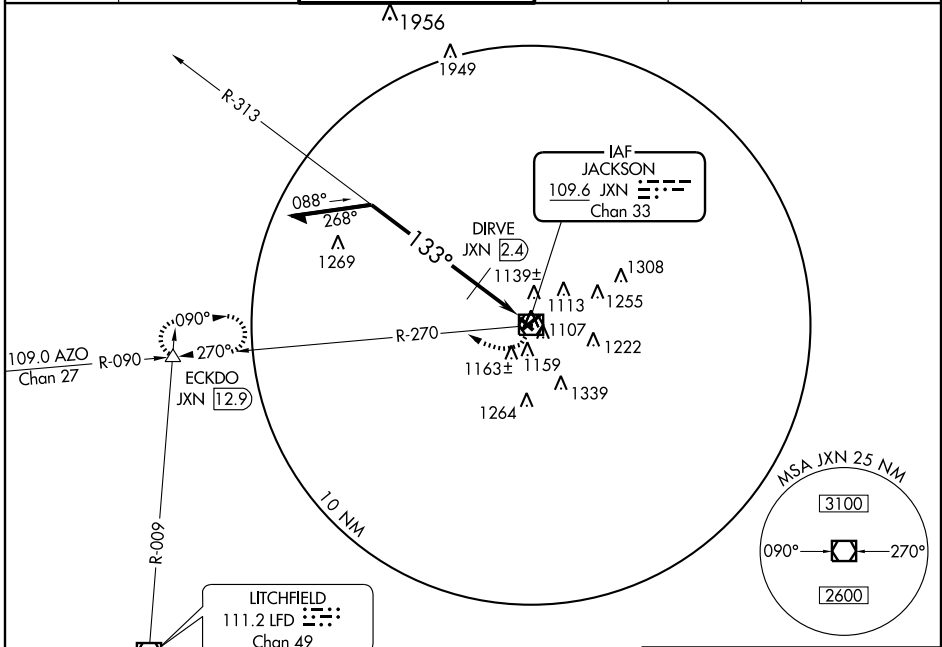
VOR/DME JXN <b>109.6</b> Chan <b>33</b>	APP CRS <b>133°</b>	Rwy Idg TDZE Apt Elev	<b>4000</b> <b>996</b> <b>1001</b>
---	------------------------	-----------------------------	--

# VOR RWY 14

JACKSON COUNTY-REYNOLDS FIELD (JXN)

**▼** Visibility reduction by helicopters NA. When local altimeter setting not received, use Mason altimeter setting and increase all MDA 60 feet, increase all Cat C/D visibilities 1/4 mile.  
**▲** MISSED APPROACH: Climbing right turn to 3000 via JXN R-270 to ECKDO Int/JXN 12.9 DME and hold.

ATIS <b>125.725</b>	LANSING APP CON <b>127.3 357.6</b>	JACKSON TOWER* <b>128.475 (CTAF) 257.8</b>	GND CON <b>121.9</b>	CLNC DEL <b>121.9</b>	UNICOM <b>122.95</b>
------------------------	---------------------------------------	---	-------------------------	--------------------------	-------------------------



CATEGORY	A	B	C	D
S-14	1580-1	584 (600-1)	1580-1½ 584 (600-1½)	1580-1¾ 584 (600-1¾)
CIRCLING	1580-1	579 (600-1)	1580-1½ 579 (600-1½)	1640-2 639 (700-2)
DIRVE MINIMUMS				
S-14	1400-1	404 (400-1)	1400-1¼	404 (400-1¼)
CIRCLING	1520-1	519 (600-1)	1520-1½ 519 (600-1½)	1640-2 639 (700-2)

EC-1, 22 OCT 2009 to 19 NOV 2009

EC-1, 22 OCT 2009 to 19 NOV 2009