

WAAS CH 82212 W24A	APP CRS 236°	Rwy Idg TDZE Apt Elev	5349 999 1001
--	------------------------	-----------------------------	--

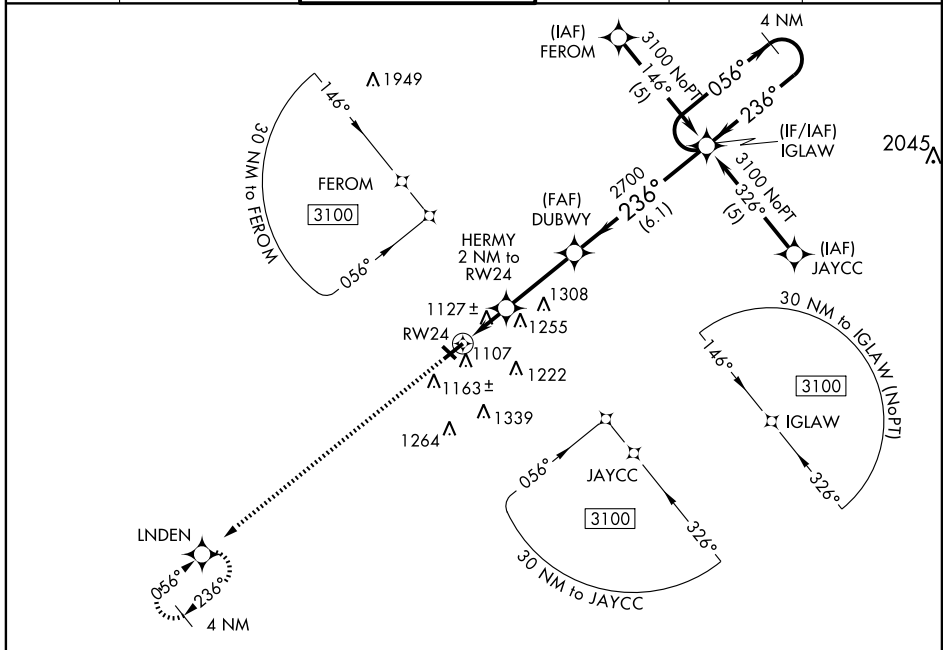
RNAV (GPS) RWY 24

JACKSON COUNTY-REYNOLDS FIELD (JXN)

⚠ Baro-VNAV NA when using Mason altimeter setting. For uncompensated Baro-VNAV systems, LNAV/VNAV NA below -17°C (2°F) or above 47°C (116°F) DME/DME RNP-0.3 NA. When local altimeter setting not received, use Mason altimeter setting and increase all DA 54 feet, all MDA 60 feet. Increase LNAV/VNAV all Cats, LNAV and circling Cat C/D visibility ¼ mile.

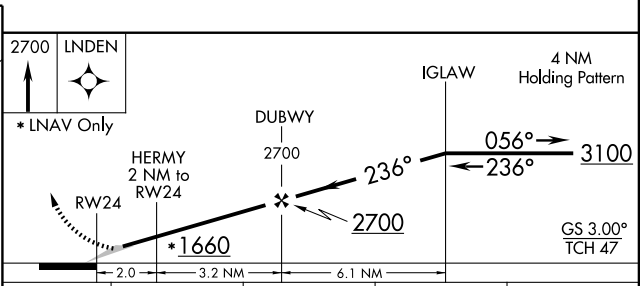
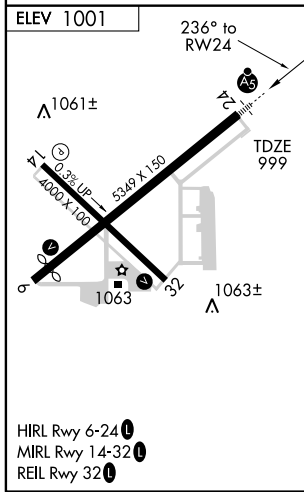
MALSR
 MISSED APPROACH:
Climb to 2700 direct
LNDEN and hold.

ATIS 125.725	LANSING APP CON 127.3 357.6	JACKSON TOWER* 128.475 (CTAF) 257.8	GND CON 121.9	CLNC DEL 121.9	UNICOM 122.95
------------------------	---------------------------------------	--	-------------------------	--------------------------	-------------------------



EC-1, 22 OCT 2009 to 19 NOV 2009

EC-1, 22 OCT 2009 to 19 NOV 2009



CATEGORY	A	B	C	D
LPV DA	1199-½ 200 (200-½)			
LNAV/VNAV DA	1409-1 410 (500-1)			
LNAV MDA	1560-½ 561 (600-½)	1560-1 561 (600-1)	1560-1½ 561 (600-1½)	1560-1¼ 561 (600-1¼)
CIRCLING	1560-1 559 (600-1)	1560-1½ 559 (600-1½)	1640-2 639 (700-2)	