

JACKSON, MICHIGAN

AL-861 (FAA)

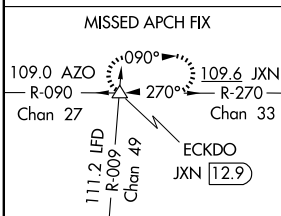
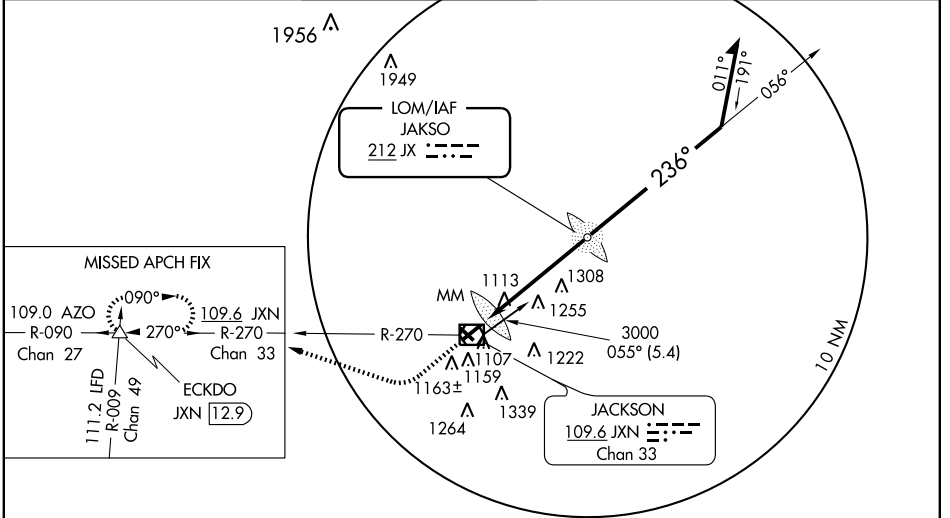
# NDB RWY 24

JACKSON COUNTY-REYNOLDS FIELD (JXN)

LOM JX <b>212</b>	APP CRS <b>236°</b>	Rwy Idg <b>5349</b>
		TDZE <b>999</b>
		Apt Elev <b>1001</b>

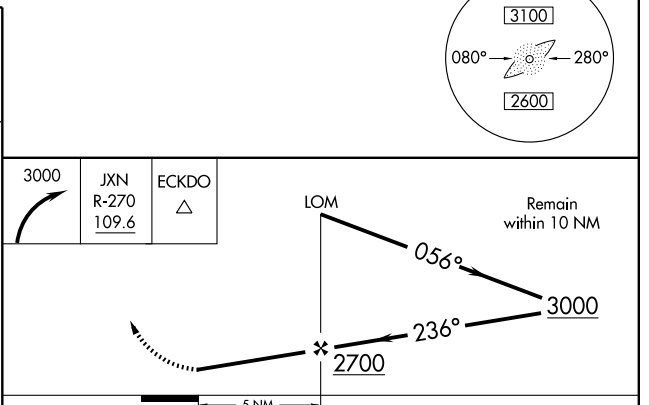
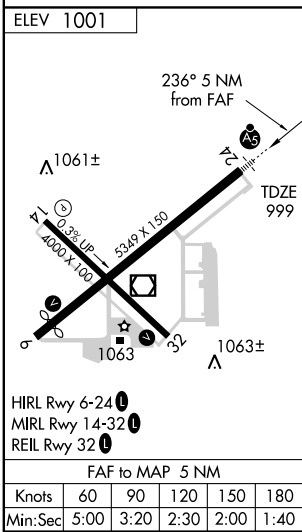
	<b>MALS R</b> 		<b>MISSED APPROACH:</b> Climbing right to 3000 via JXN R-270 to ECKDO Int/JXN 12.9 DME and hold.		
--	-------------------	--	--	--	--

ATIS <b>125.725</b>	LANSING APP CON <b>127.3 357.6</b>	JACKSON TOWER★ <b>128.475 (CTAF) 0 257.8</b>	GND CON <b>121.9</b>	CLNC DEL <b>121.9</b>	UNICOM <b>122.95</b>
------------------------	---------------------------------------	---	-------------------------	--------------------------	-------------------------



EC-1, 22 OCT 2009 to 19 NOV 2009

EC-1, 22 OCT 2009 to 19 NOV 2009



CATEGORY	A	B	C	D
S-24	1660-¾ 661 (700-¾)	1660-1 661 (700-1)	1660-1½ 661 (700-1½)	1660-2 661 (700-2)
CIRCLING	1660-1 659 (700-1)	1660-1 659 (700-1)	1660-1½ 659 (700-1½)	1660-2 659 (700-2)

JACKSON, MICHIGAN  
Amdt 14 09183

42°16'N - 84°28'W

JACKSON COUNTY-REYNOLDS FIELD (JXN)  
**NDB RWY 24**