

MANSFIELD, OHIO

AL-860 (FAA)

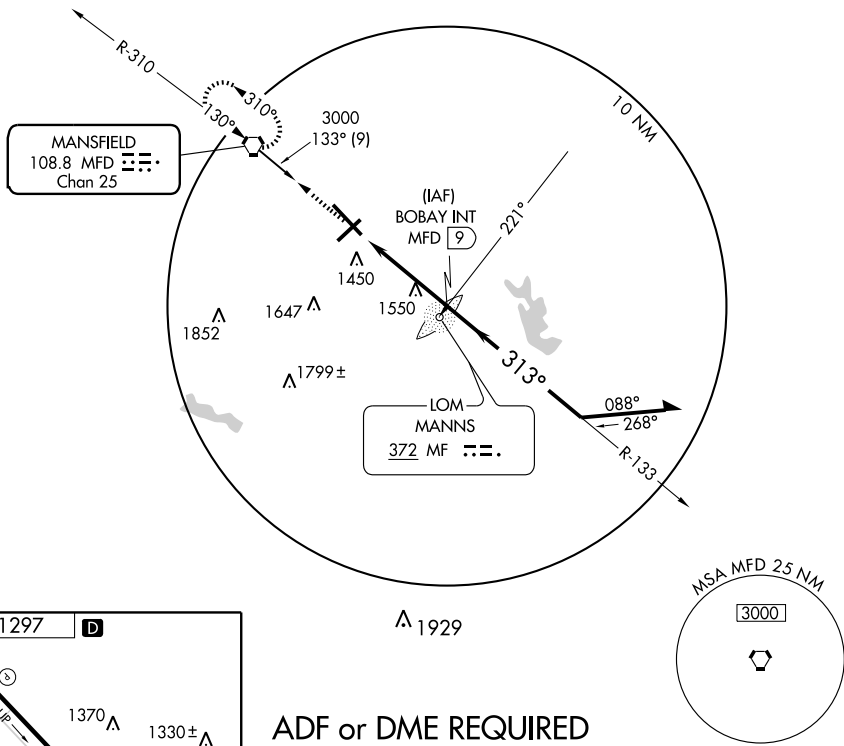
VORTAC MFD 108.8 Chan 25	APP CRS 313°	Rwy Idg TDZE 1293 Apt Elev 1297	9001
--	------------------------	---	-------------

VOR RWY 32

MANSFIELD LAHM RGNL (MFD)

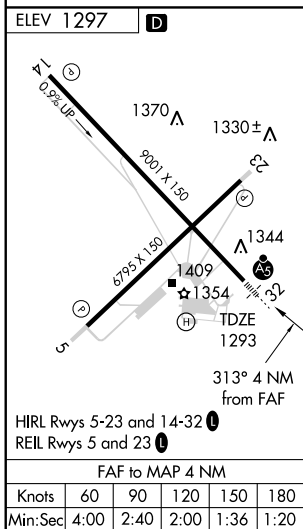
<p>⚠ When local altimeter setting not received, use Marion altimeter setting and increase all MDA 120 feet, S-32 visibility Cats C and D ½ mile and Circling Cat C ½ mile, Cat D ¼ mile. VDP NA with Marion altimeter setting. ADF or DME Required.</p>	<p>MALSR</p>	<p>MISSED APPROACH: Climb to 3000 direct MFD VORTAC and hold.</p>
	<p>ASR</p>	

ATIS 125.3	MANSFIELD APP CON * 124.2 390.8	MANSFIELD TOWER * 119.8 (CTAF) 0 325.8	GND CON 121.8 325.8	UNICOM 122.95
----------------------	---	--	-------------------------------	-------------------------

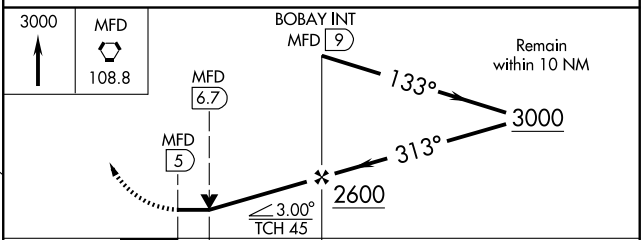


EC-2, 22 OCT 2009 to 19 NOV 2009

EC-2, 22 OCT 2009 to 19 NOV 2009



ADF or DME REQUIRED



CATEGORY	A	B	C	D
S-32	1860/24	567 (600-½)	1860/50 567 (600-1)	1860/60 567 (600-1¼)
CIRCLING	1860-1	563 (600-1)	1860-1½ 563 (600-1½)	1880-2 583 (600-2)

MANSFIELD, OHIO
Amdt 7A 09295

40°49'N - 82°31'W

MANSFIELD LAHM RGNL (MFD) VOR RWY 32