

MANSFIELD, OHIO

AL-860 (FAA)

VORTAC MFD <b>108.8</b> Chan 25	APP CRS <b>130°</b>	Rwy Idg TDZE <b>1276</b> Apt Elev <b>1297</b>
---------------------------------------	------------------------	---

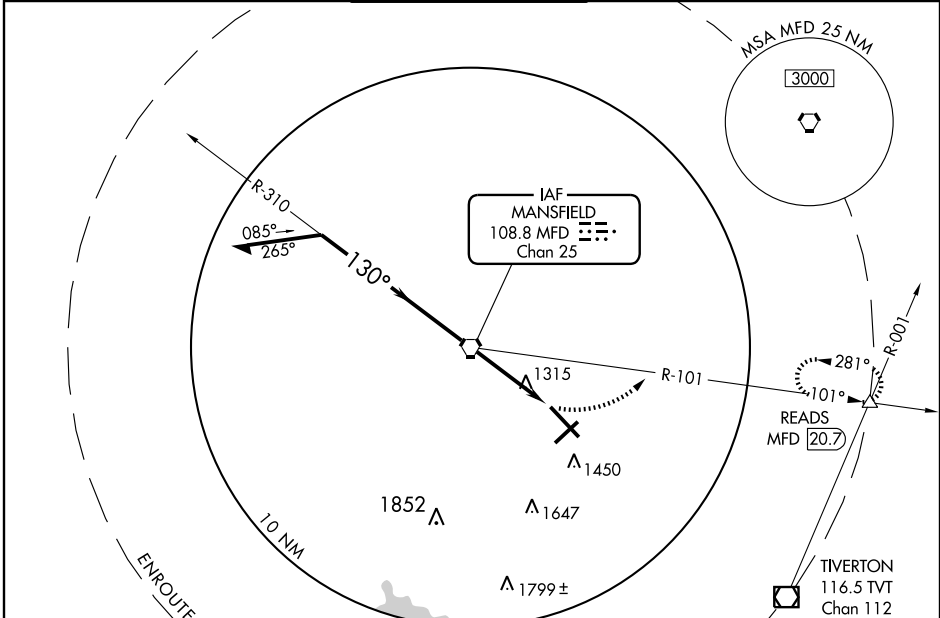
# VOR RWY 14

MANSFIELD LAHM RGNL (MFD)

**ASR** When local altimeter setting not received, use Marion altimeter setting and increase all MDA 120 feet, S-14 visibility Cats C and D ¼ mile and Circling Cat D ¼ mile. VDP NA with Marion altimeter setting. Inoperative table does not apply.

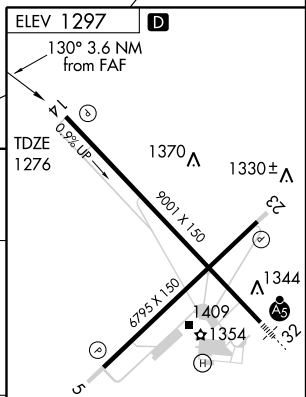
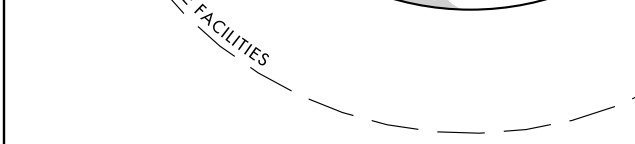
**MISSED APPROACH:** Climbing left turn to 3000 via MFD R-101 to READS Int/MFD 20.7 DME and hold.

ATIS <b>125.3</b>	MANSFIELD APP CON * <b>124.2 390.8</b>	MANSFIELD TOWER * <b>119.8 (CTAF) 325.8</b>	GND CON <b>121.8 325.8</b>	UNICOM <b>122.95</b>
----------------------	---	--	-------------------------------	-------------------------



EC-2, 22 OCT 2009 to 19 NOV 2009

EC-2, 22 OCT 2009 to 19 NOV 2009



Remain within 10 NM	VORTAC	3000	READS
2900	310°	MFD R-101 108.8	△
2400	130°	MFD 2.5	
	2.94°	MFD 3.6	
	TCH 42		
	2.5 NM	1.0	

CATEGORY	A	B	C	D
S-14	1620-1	344 (400-1)	1620-1½	344 (400-1½)
CIRCLING	1760-1	463 (500-1)	1760-1½	1880-2
			463 (500-1½)	583 (600-2)

HIRL Rwy 5-23 and 14-32				
REIL Rwy 5 and 23				
FAF to MAP 3.6 NM				
Knots	60	90	120	150
Min:Sec	3:36	2:24	1:48	1:26

MANSFIELD, OHIO  
Amdt 14A 09295

40°49'N - 82°31'W

# MANSFIELD LAHM RGNL (MFD) VOR RWY 14