

RNAV (GPS) RWY 32

MANSFIELD LAHM RGNL (MFD)

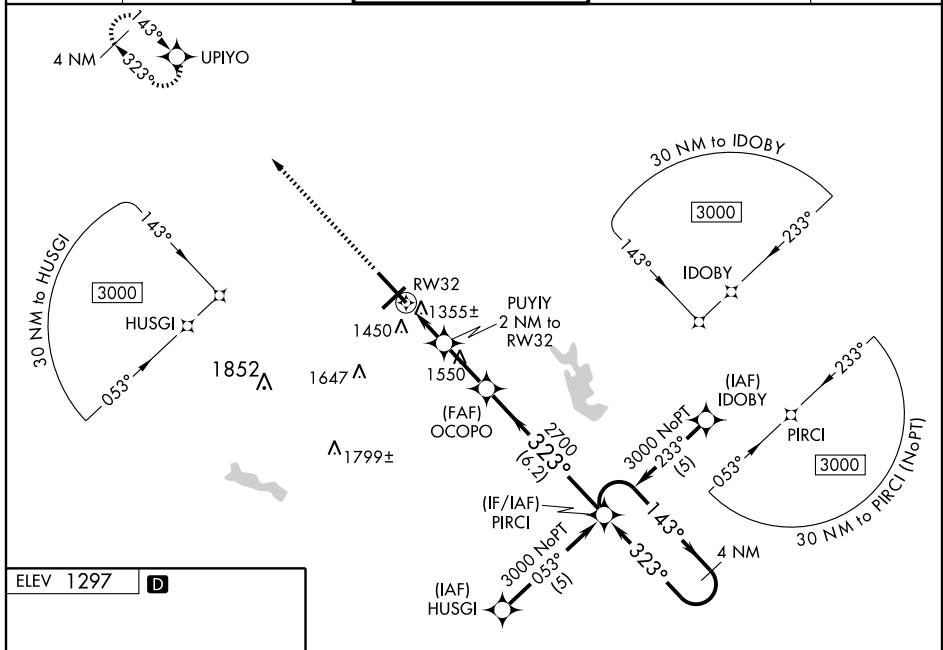
WAAS CH 99611 W32A	APP CRS 323°	Rwy Idg TDZE Apt Elev	9001 1293 1297
--	------------------------	-----------------------------	---

Baro-VNAV NA when using Marion altimeter setting. For uncompensated Baro-VNAV systems, LNAV/VNAV NA below -17°C (2°F) or above 46°C (114°F). DME/DME RNP-0.3 NA. When local altimeter setting not received, use Marion altimeter setting and increase all DA 107 feet and all MDA 120 feet, LNAV Cat C and Circling Cat D visibility ¼ mile, LNAV/VNAV all Cats ½ mile. For inoperative MALSRS increase LNAV Cat D visibility ¼ mile. For inoperative MALSRS when using Marion altimeter setting increase LPV all Cats visibility to 1. VDP NA with Marion altimeter setting.



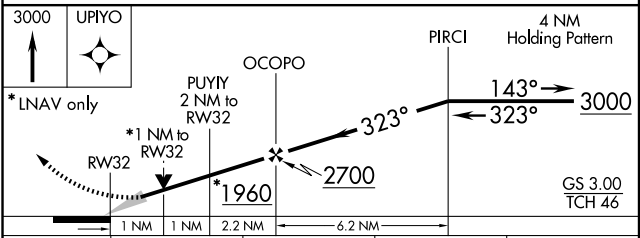
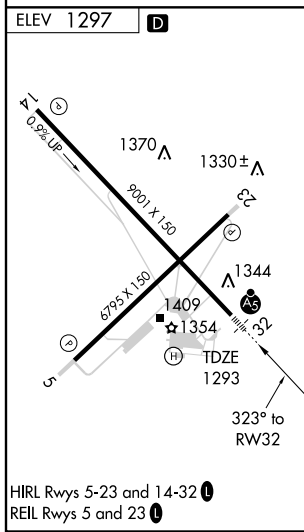
MISSED APPROACH:
Climb to 3000 direct
UPIYO and hold.

ATIS 125.3	MANSFIELD APP CON ★ 124.2 390.8	MANSFIELD TOWER ★ 119.8 (CTAF) 325.8	GND CON 121.8 325.8	UNICOM 122.95
----------------------	---	--	-------------------------------	-------------------------



EC-2, 22 OCT 2009 to 19 NOV 2009

EC-2, 22 OCT 2009 to 19 NOV 2009



CATEGORY	A	B	C	D
LPV DA		1493/24	200 (200-½)	
LNAV/VNAV DA		1789/60	496 (500-1½)	
LNAV MDA	1660/24	367 (400-½)		1660/50 367 (400-1)
CIRCLING	1760-1	463 (500-1)	1760-1½ 463 (500-1½)	1880-2 583 (600-2)