

RNAV (GPS) RWY 14

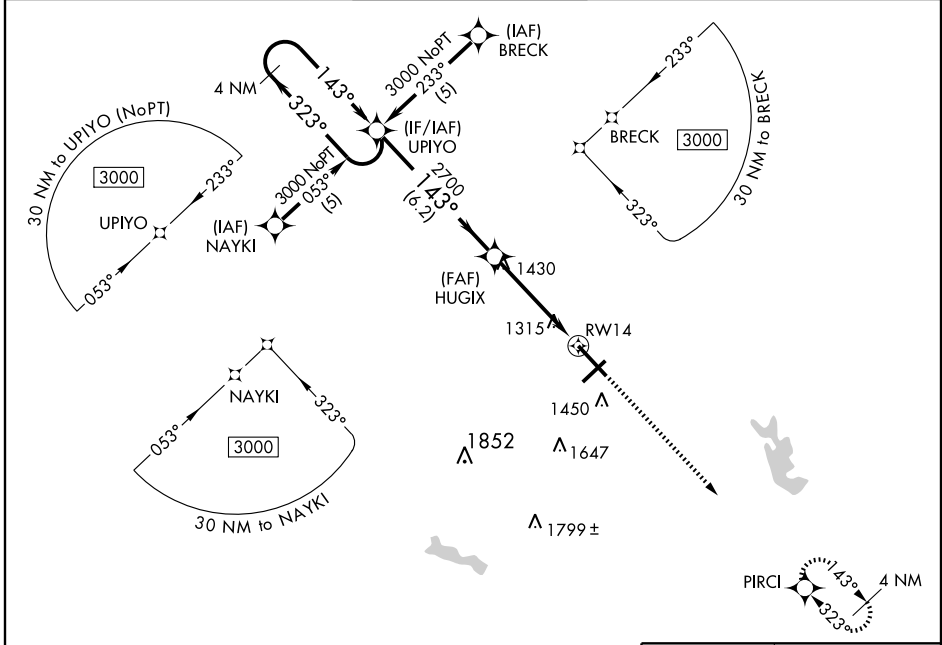
MANSFIELD LAHM RGNL (MFD)

APP CRS	Rwy Idg	9001
143°	TDZE	1276
	Apt Elev	1297

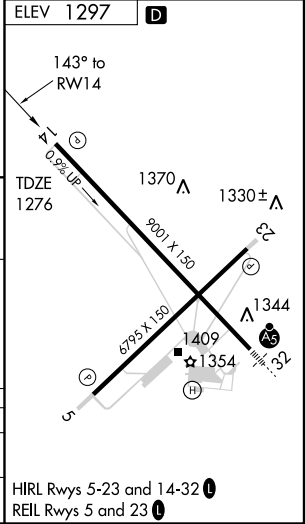
⚠ DME/DME RNP-0.3 NA. When local altimeter setting not received, use Marion altimeter setting and increase all MDA 120 feet and LNAV Cat C and Circling Cat D visibility ¼ mile.
⚠ VDP NA with Marion altimeter setting.

MISSED APPROACH: Climb to 3000 direct PIRCI and hold.

ATIS 125.3	MANSFIELD APP CON * 124.2 390.8	MANSFIELD TOWER * 119.8 (CTAF) 0 325.8	GND CON 121.8 325.8	UNICOM 122.95
----------------------	---	--	-------------------------------	-------------------------



4 NM Holding Pattern UPIYO		3000	PIRCI
CATEGORY	A	B	D
LNAV MDA	1620-1 344 (400-1)		1620-1¼ 344 (400-1¼)
CIRCLING	1760-1	463 (500-1)	1880-2 583 (600-2)



EC-2, 22 OCT 2009 to 19 NOV 2009

EC-2, 22 OCT 2009 to 19 NOV 2009