

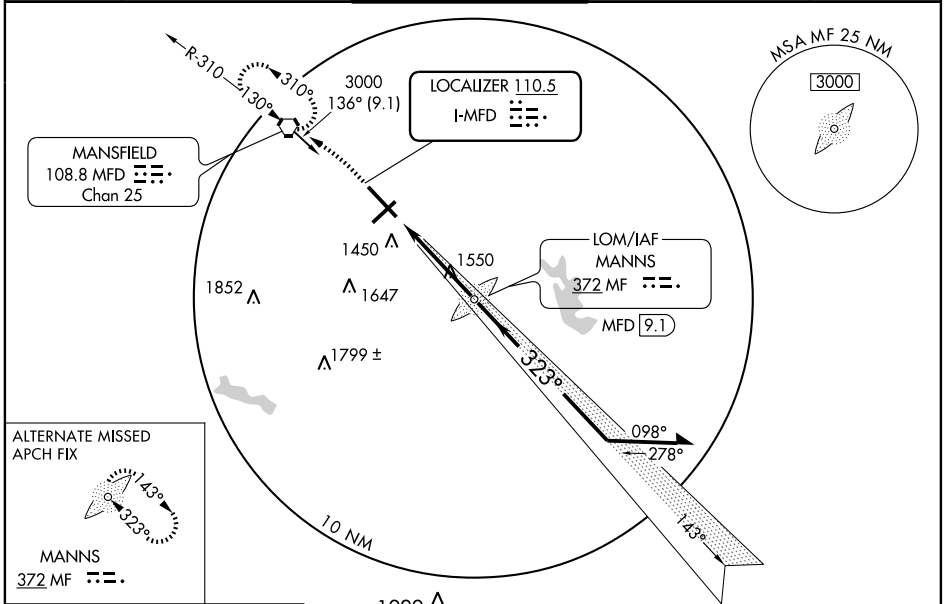
LOC I-MFD 110.5	APP CRS 323°	Rwy Idg TDZE Apt Elev	9001 1293 1297
---------------------------	------------------------	-----------------------------	---

ILS or LOC RWY 32
MANSFIELD LAHM RGNL (MFD)

When local altimeter setting not received, use Marion altimeter setting and increase all DA 107 feet, all MDA 120 feet, increase S-LOC 32 Cat C/D visibility ½ mile and Circling Cat C visibility ½ mile, Cat D ¼ mile.
ASR For inoperative MALS R when using Marion altimeter setting, increase S-LS 32 visibility ½ mile all Cats.

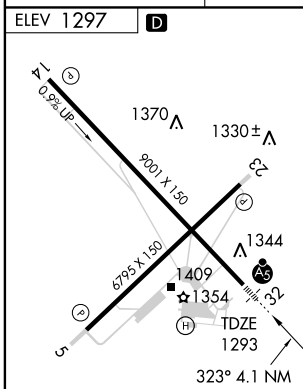
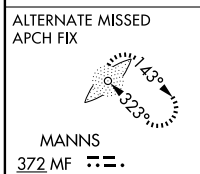
MALS R
MISSED APPROACH: Climb to 2000 then climbing left turn to 3000 direct MFD VORTAC and hold.

ATIS 125.3	MANSFIELD APP CON * 124.2 390.8	MANSFIELD TOWER * 119.8 (CTAF) 0 325.8	GND CON 121.8 325.8	UNICOM 122.95
----------------------	---	--	-------------------------------	-------------------------



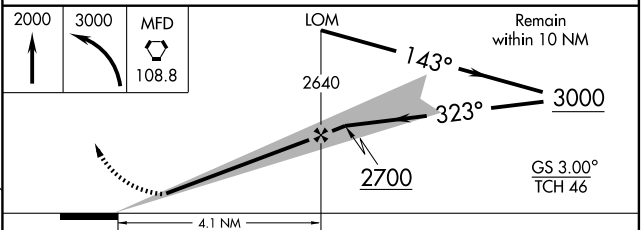
EC-2, 22 OCT 2009 to 19 NOV 2009

EC-2, 22 OCT 2009 to 19 NOV 2009



FAF to MAP 4.1 NM					
Knots	60	90	120	150	180
Min:Sec	4:06	2:44	2:03	1:38	1:22

ADF or DME or RADAR REQUIRED



CATEGORY	A	B	C	D
S-ILS 32	1493/24 200 (200-½)			
S-LOC 32	1860/24	567 (600-½)	1860/50 567 (600-1)	1860/60 567 (600-1½)
CIRCLING	1860-1	563 (600-1)	1860-1½ 563 (600-1½)	1880-2 583 (600-2)