

VORTAC MFD 108.8 Chan 25	APCH CRS 130°	Rwy Idg TDZE Arprt Elev 9001 1276 1297
--	-------------------------	--

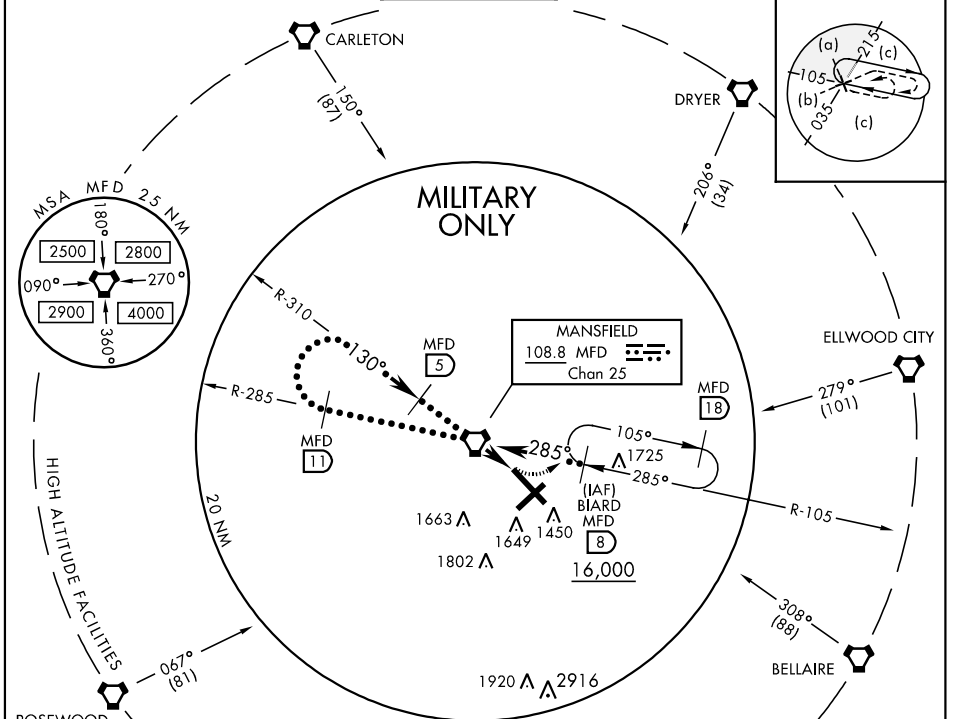
HI-VOR/DME or TACAN RWY 14

JAL-860 [USAF]

MANSFIELD LAHM RGNL (KMFD)

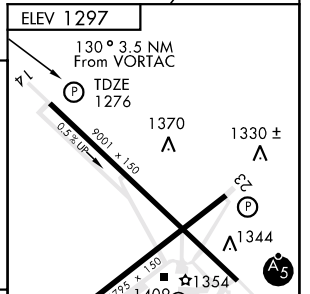
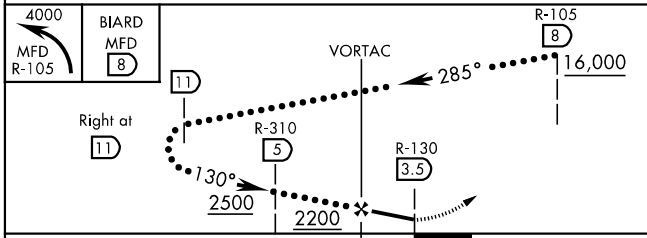
MISSED APPROACH: Climbing left turn to 4000 via MFD R-105 to BIARD 8 DME and hold.

ATIS 125.3	MANSFIELD APP CON 124.2 390.8	MANSFIELD TOWER 119.8 325.8	GND CON 121.8 325.8	UNICOM 122.95	ASR
----------------------	---	---------------------------------------	-------------------------------	-------------------------	-----



When control tower closed use Cleveland-Hopkins altimeter setting.

EMERG SAFE ALT 100 NM 4000



CATEGORY	C	D	E
S-14	1620-1 344 (400-1)	1620-1 1/4 344 (400-1 1/4)	
CIRCUING	1760-1 1/2 463 (500-1 1/2)	1860-2 563 (600-2)	2000-2 1/4 703 (800-2 1/4)
CLEVELAND-HOPKINS ALTIMETER SETTINGS MINIMUMS			
S-14	1920-1 3/4 644 (700-1 3/4)	1920-2 644 (700-2)	1920-2 1/4 644 (700-2 1/4)
CIRCUING	2060-2 1/4 763 (800-2 1/4)	2120-2 3/4 823 (900-2 3/4)	2300-3 1003 (1100-3)

HIRL Rwy 5-23 and 14-32
REIL Rwy 5 and 23

HI-VOR/DME or TACAN RWY 14

EC-2, 22 OCT 2009 to 19 NOV 2009

EC-2, 22 OCT 2009 to 19 NOV 2009