

RNAV (GPS) RWY 35

ANDERSON RGNL (AND)

APP CRS 351°	Rwy Idg 4996
	TDZE 762
	Apt Elev 782

▼ If local altimeter setting not received, use Clemson altimeter setting and increase all MDAs 60 feet. Visibility reduction by helicopters NA.
▲ Straight-in minimums NA at night. DME/DME RNP-0.3 NA.

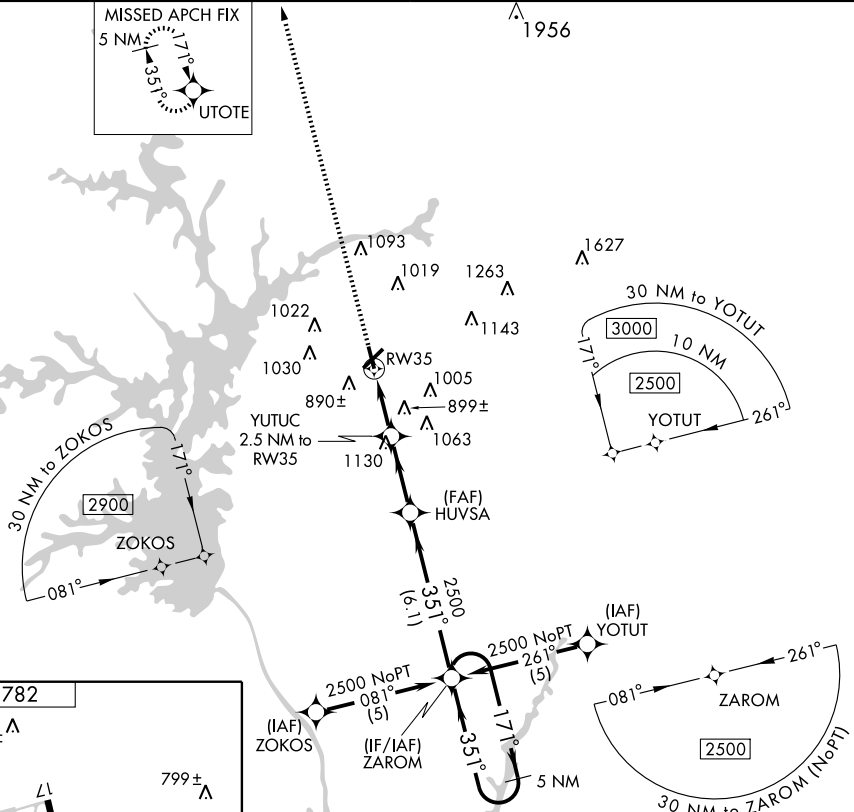
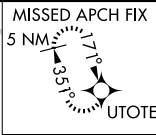
MISSED APPROACH: Climb to 3100 direct UTOTE and hold.

ASOS
120.675

GREER APP CON *
118.8 385.4

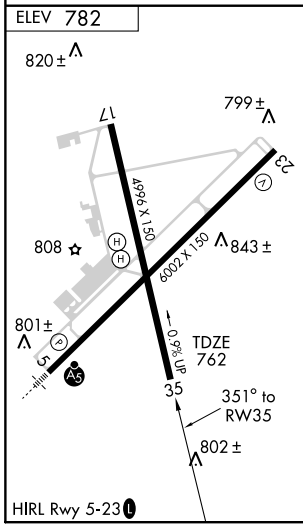
CTAF
123.60

UNICOM
122.95



SE-2, 22 OCT 2009 to 19 NOV 2009

SE-2, 22 OCT 2009 to 19 NOV 2009



3100	UTOTE	5 NM Holding Pattern		
YUTUC 2.5 NM to RW35	HUVSA	ZAROM		
RW35	1580	2500	2500	2500
-2.5 NM		2.8 NM	6.1 NM	
CATEGORY	A	B	C	D
LNAV MDA	1160-1	398 (400-1)	1160-1¼ 398 (400-1¼)	
CIRCLING	1260-1	478 (500-1)	1260-1½ 478 (500-1½)	1340-2 558 (600-2)