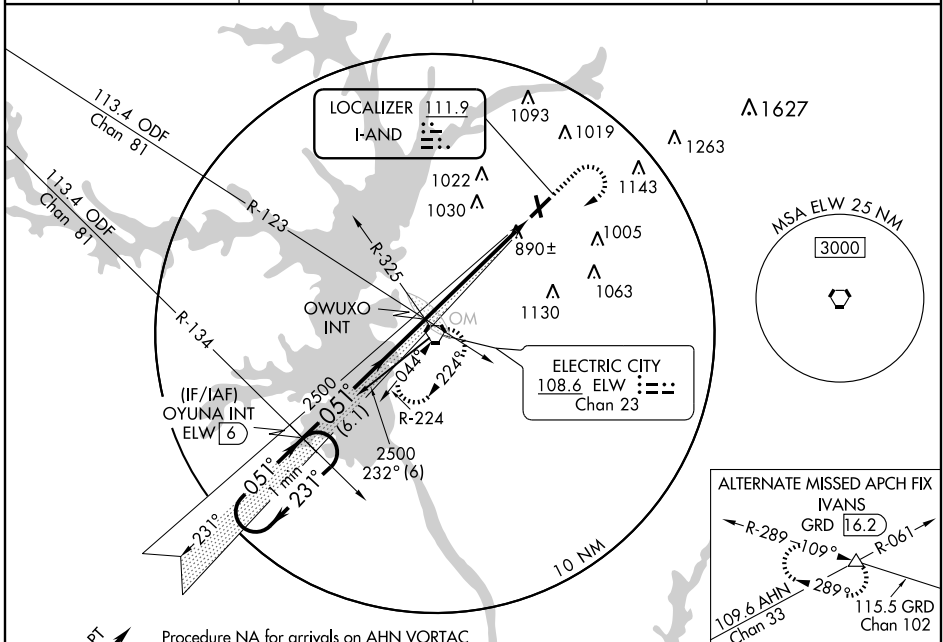


ILS or LOC RWY 5

ANDERSON RGNL (AND)

LOC I-AND 111.9	APP CRS 051°	Rwy Idg 6002
		TDZE 758
		Apt Elev 782

<p>▼ If local altimeter setting not received, use Clemson altimeter setting and increase all DAs/MDAs 60 feet.</p>	<p>MALSR</p>	<p>MISSED APPROACH: Climb to 1600 then climbing right turn to 2500 direct ELW VORTAC and hold.</p>	
<p>ASOS 120.675</p>	<p>GREER APP CON* 118.8 385.4</p>	<p>CTAF 123.6</p>	<p>UNICOM 122.95</p>



SE-2, 22 OCT 2009 to 19 NOV 2009

SE-2, 22 OCT 2009 to 19 NOV 2009

<p>One Minute Holding Pattern</p> <p>2500 ← 231°</p> <p>2500 → 051°</p> <p>GS 3.00° TCH 53</p>	<p>2500</p> <p>2500</p> <p>2500</p>	<p>2500</p> <p>2500</p> <p>2500</p>	<p>2500</p> <p>2500</p> <p>2500</p>	<p>2500</p> <p>2500</p> <p>2500</p>
CATEGORY	A	B	C	D
S-ILS 5	958-½ 200 (200-½)			
S-LOC 5	1200-½ 442 (500-½)	1200-¾ 442 (500-¾)	1200-1 442 (500-1)	
CIRCLING	1260-1 478 (500-1)	1260-1½ 478 (500-1½)	1340-2 558 (600-2)	