

RUSSELL, KANSAS

AL-856 (FAA)

RNAV (GPS) RWY 17

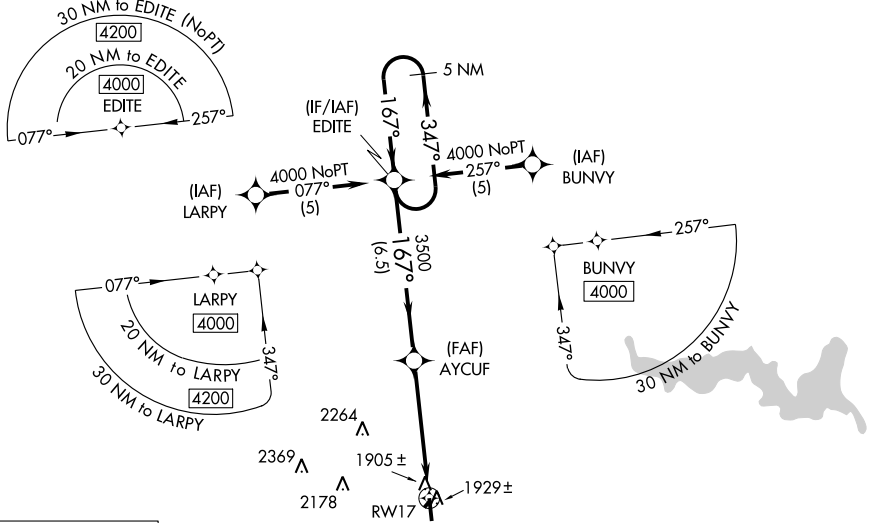
RUSSELL MUNI (RSL)

WAAS Ch 93904 W17A	APP CRS 167°	Rwy Idg TDZE 1864 Apt Elev 1864	5000
--	------------------------	---	-------------

⚠ BARO-VNAV NA when using Hays altimeter setting. For uncompensated BARO-VNAV systems, LNAV/VNAV NA below -18°C (0°F) or above 54°C (130°F).
⚠ DME/DME RNP-0.3 NA. Visibility reduction by helicopters NA. If local altimeter setting not received, use Hays altimeter setting and increase all DAs 69 feet and all MDAs 80 feet.

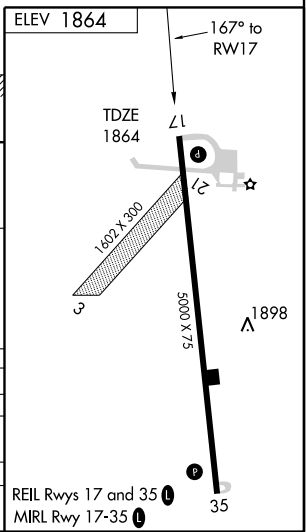
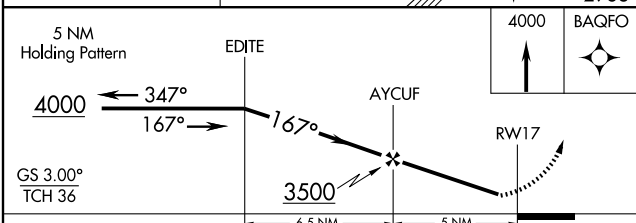
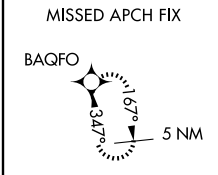
MISSED APPROACH: Climb to 4000 direct BAQFO and hold.

ASOS 128.325	KANSAS CITY CENTER 124.4 322.4	UNICOM 122.7 (CTAF) 0
------------------------	--	---------------------------------



NC-2, 22 OCT 2009 to 19 NOV 2009

NC-2, 22 OCT 2009 to 19 NOV 2009



CATEGORY	A	B	C	D
LPV DA	2117-1	253 (300-1)		NA
LNAV/VNAV DA	2175-1½	311 (400-1½)		NA
LNAV MDA	2220-1	356 (400-1)		NA
CIRCLING	2240-1 376 (400-1)	2320-1 456 (500-1)	2320-1½ 456 (500-1½)	NA

RUSSELL, KANSAS
Orig 07298

38°52'N-98°49'W

RNAV (GPS) RWY 17