

VOR/DME RWY 19

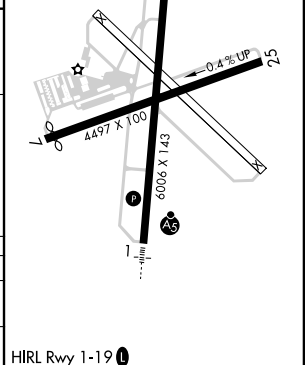
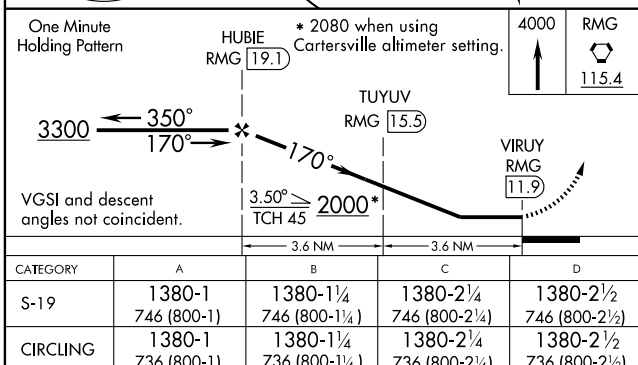
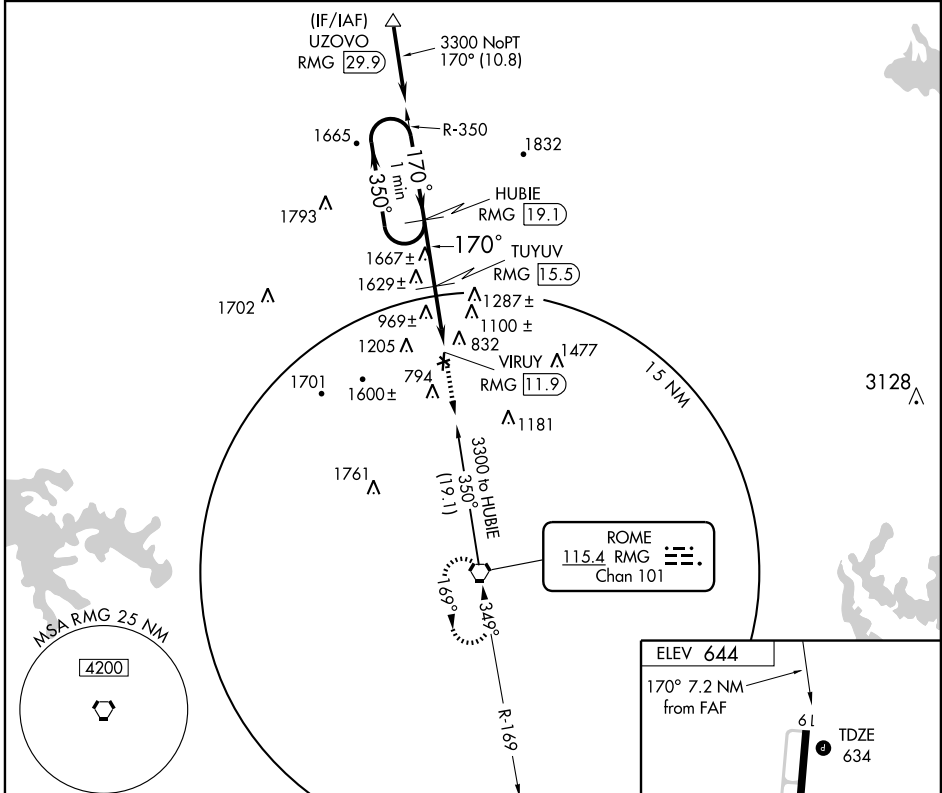
ROME/RICHARD B. RUSSELL (RMG)

VORTAC RMG 115.4 Chan 101	APP CRS 170°	Rwy Idg TDZE Apt Elev	6006 634 644
---	------------------------	-----------------------------	---

▼ Circling NA West of Rwy 1-19 at night. Circling NA Northwest of Rwy 7 and 19.
 ▲ Visibility reduction by helicopters NA. When local altimeter setting not received, use Cartersville altimeter setting and increase all MDA 80 feet, and increase S-19 and Circling Cats. C and D visibility ¼ mile.

MISSED APPROACH: Climb to 4000 direct RMG VORTAC and hold, continue climb-in-hold to 4000.

ASOS 119.925	ATLANTA CENTER 133.8 353.7	UNICOM 123.0 (CTAF) 0
------------------------	--------------------------------------	---------------------------------



CATEGORY	A	B	C	D
S-19	1380-1 746 (800-1)	1380-1¼ 746 (800-1¼)	1380-2¼ 746 (800-2¼)	1380-2½ 746 (800-2½)
CIRCLING	1380-1 736 (800-1)	1380-1¼ 736 (800-1¼)	1380-2¼ 736 (800-2¼)	1380-2½ 736 (800-2½)

HIRL Rwy 1-19 0

SE-4, 22 OCT 2009 to 19 NOV 2009

SE-4, 22 OCT 2009 to 19 NOV 2009