

ROME, GEORGIA

AL-855 (FAA)

VOR/DME RWY 1

ROME/RICHARD B. RUSSELL (RMG)

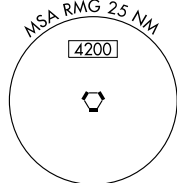
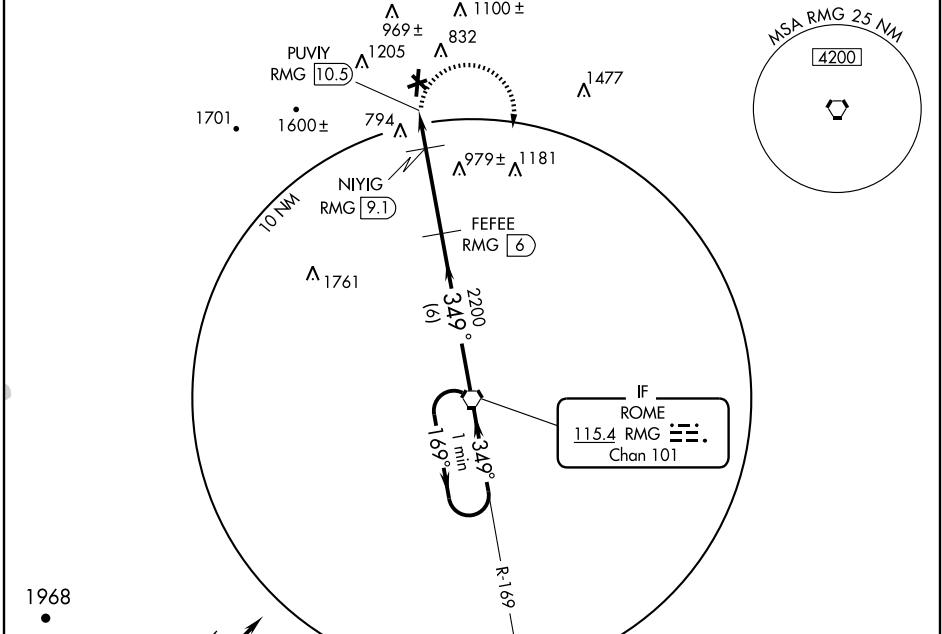
VORTAC RMG 115.4 Chan 101	APP CRS 349°	Rwy Idg TDZE Apt Elev	6006 636 644
---	------------------------	-----------------------------	---

⚠ Inoperative table does not apply. Circling NA West of Rwy 1-19 at night. Circling NA Northwest of Rws 7 and 19. Visibility reduction by helicopters NA. When local altimeter setting not received, use Cartersville altimeter setting and increase all MDA 80 feet and S-1 Cats. C and D and Circling Cat. D visibility ¼ mile.



MISSED APPROACH: Climbing right turn to 4000 direct RMG VORTAC and hold, continue climb-in-hold to 4000.

ASOS 119.925	ATLANTA CENTER 133.8 353.7	UNICOM 123.0 (CTAF)
------------------------	--------------------------------------	-------------------------------

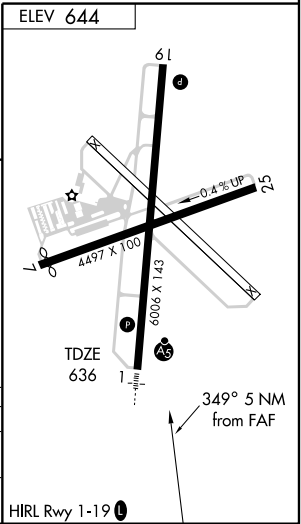
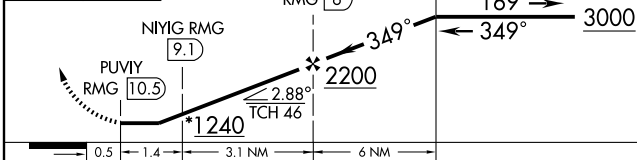


SE-4, 22 OCT 2009 to 19 NOV 2009

SE-4, 22 OCT 2009 to 19 NOV 2009



4000	RMG 115.4	* 1320 when using Cartersville altimeter setting.	VORTAC	One Minute Holding Pattern
------	--------------	---	--------	----------------------------



CATEGORY	A	B	C	D
S-1	1100-1	464 (500-1)	1100-1¼ 464 (500-1¼)	1100-1½ 464 (500-1½)
CIRCLING	1160-1	516 (600-1)	1160-1½ 516 (600-1½)	1360-2¼ 716 (800-2¼)

ROME, GEORGIA
Amdt 9 09071

34°21'N-85°10'W

VOR/DME RWY 1