

ROME, GEORGIA

AL-855 (FAA)

# RNAV (GPS) RWY 25

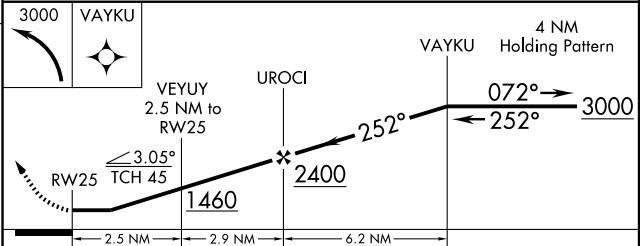
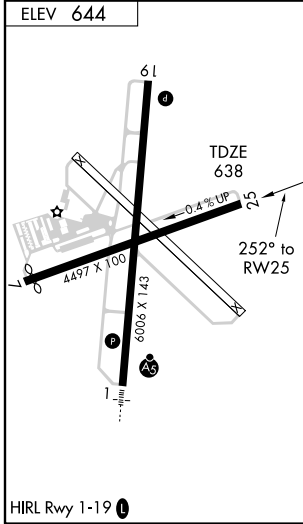
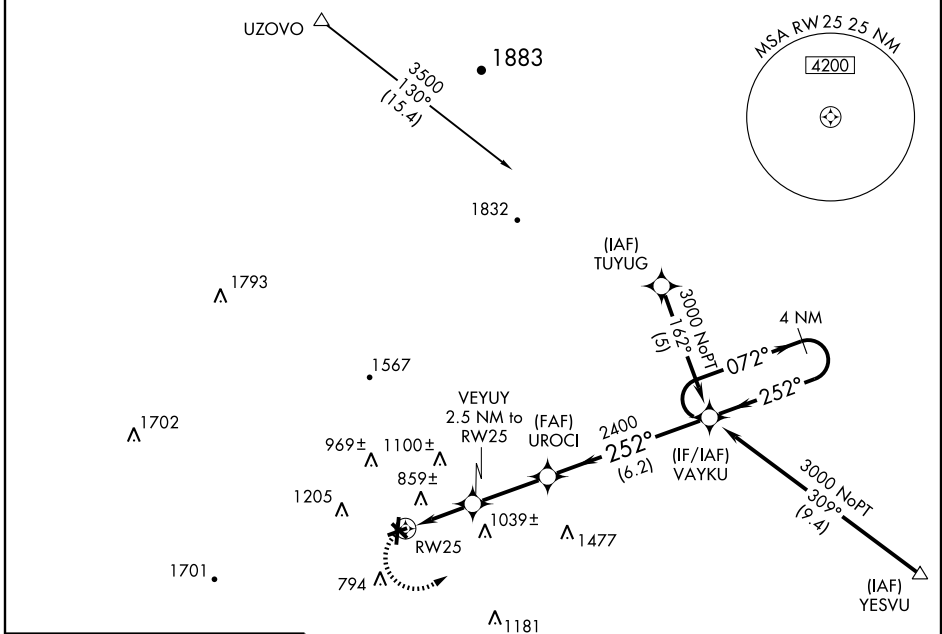
ROME/RICHARD B. RUSSELL (RMG)

APP CRS	Rwy Idg	<b>4497</b>
<b>252°</b>	TDZE	<b>638</b>
	Apt Elev	<b>644</b>

**▼** Circling NA Northwest of Rwy 7 and 19. DME/DME RNP-0.3 NA. Visibility reduction by helicopters NA. When local altimeter setting not received, use Cartersville altimeter setting and increase all MDA 80 feet and LNAV Cats. C and D and Circling Cat. D visibility ¼ mile. Procedure NA at night.

**MISSED APPROACH:**  
Climbing left turn to 3000 direct VAYKU and hold.

ASOS <b>119.925</b>	ATLANTA CENTER <b>133.8 353.7</b>	UNICOM <b>123.0 (CTAF) 0</b>
------------------------	--------------------------------------	---------------------------------



CATEGORY	A	B	C	D
LNAV MDA	1100-1	462 (500-1)	1100-1½ 462 (500-1½)	1100-1½ 462 (500-1½)
CIRCLING	1160-1	516 (600-1)	1160-1½ 516 (600-1½)	1360-2½ 716 (800-2½)

ROME, GEORGIA  
Orig-A 09127

34° 21' N-85° 10' W

# RNAV (GPS) RWY 25

SE-4, 22 OCT 2009 to 19 NOV 2009

SE-4, 22 OCT 2009 to 19 NOV 2009