

ROME, GEORGIA

AL-855 (FAA)

# RNAV (GPS) RWY 19

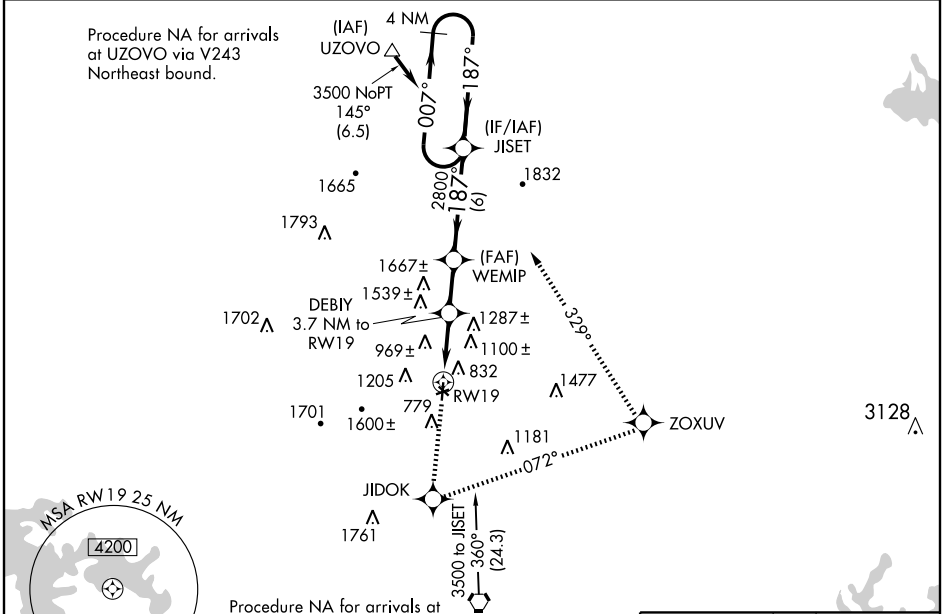
ROME/RICHARD B. RUSSELL (RMG)

WAAS CH <b>48811</b> <b>W19A</b>	APP CRS <b>187°</b>	Rwy Idg TDZE Apt Elev	<b>6006</b> <b>634</b> <b>644</b>
--	------------------------	-----------------------------	---

⚠ Circling NA West of Rwy 1-19 at night. Circling NA Northwest of Rws 7 and 19.  
 ⚠ DME/DME RNP-0.3 NA. Visibility reduction by helicopters NA. When local altimeter setting not received, use Cartersville altimeter setting and increase LPV DA to 1069 and all MDA 80 feet and LNAV Cats. B, C and D and Circling Cats. B, C and D visibility ¼ mile. VDP NA when using Cartersville altimeter setting.

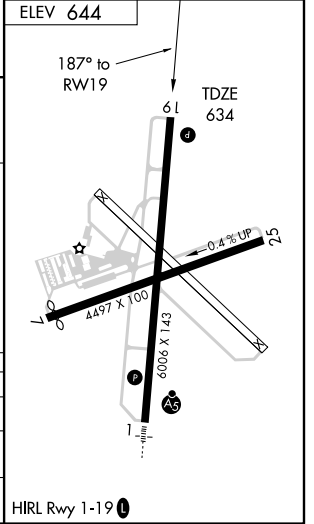
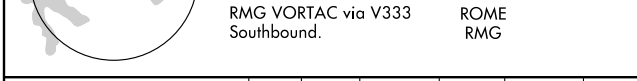
⚠ MISSED APPROACH: Climb to 3500 direct JIDOK and left turn via 072° track to ZOZUV and left turn via 329° track to JISET and hold.

ASOS <b>119.925</b>	ATLANTA CENTER <b>133.8 353.7</b>	UNICOM <b>123.0 (CTAF) 0</b>
------------------------	--------------------------------------	---------------------------------



SE-4, 22 OCT 2009 to 19 NOV 2009

SE-4, 22 OCT 2009 to 19 NOV 2009



4 NM Holding Pattern	3500 JIDOK	ZOXUV	JISET
JISET	WEMIP	DEBIY 3.7 NM to RWY19	RWY19
3500 ← 007°	187° →	072° TRK	329° TRK
GS 3.00° TCH 45	2800	*1860	*2.1 NM to RWY19
6 NM	2.9 NM	1.6 NM	2.1 NM

CATEGORY	A	B	C	D
LPV DA	1005-1¼		371 (400-1¼)	
LNAV MDA	1340-1	706 (700-1)	1340-2 706 (700-2)	1340-2¼ 706 (700-2¼)
CIRCLING	1340-1	696 (700-1)	1340-2 696 (700-2)	1360-2¼ 716 (800-2¼)

HIRL Rwy 1-19 0

ROME, GEORGIA  
Orig 09071

34°21'N-85°10'W

# RNAV (GPS) RWY 19