

ROME, GEORGIA

AL-855 (FAA)

RNAV (GPS) RWY 1

ROME/RICHARD B. RUSSELL (RMG)

APP CRS 007°	Rwy Idg 6006
	TDZE 636
	Apt Elev 644



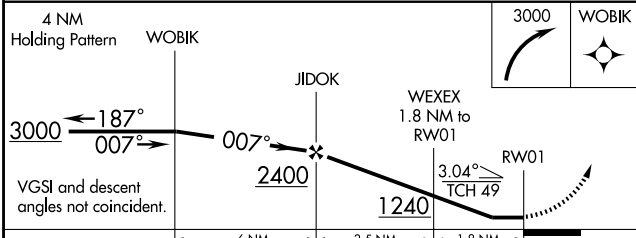
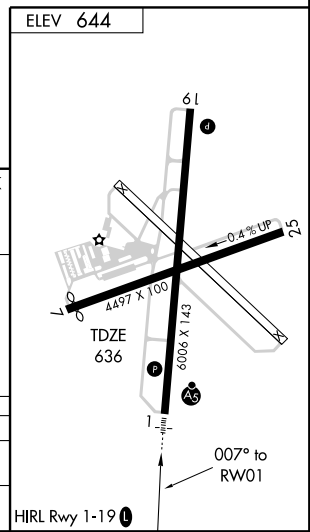
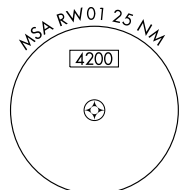
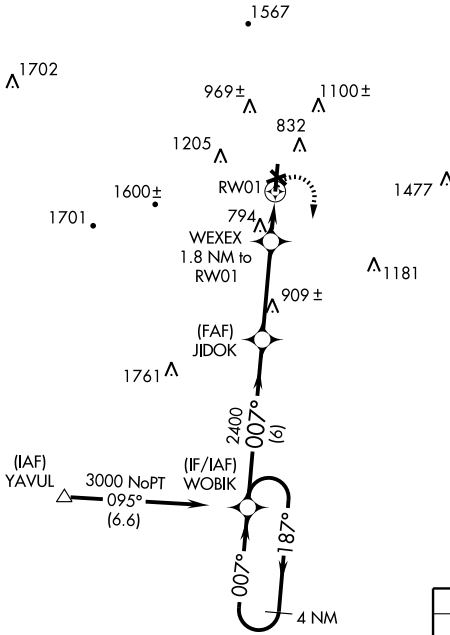
MISSED APPROACH:
Climbing right turn to 3000
direct WOBK and hold.

Inoperative table does not apply to LNAV Cat. A and B. Circling NA West of Rwy 1-19 at night. Circling NA Northwest of Rwy 7 and 19. DME/DME RNP-0.3 NA. Visibility reduction by helicopters NA. When local altimeter setting not received, use Cartersville altimeter setting and increase all MDA 80 feet, and increase LNAV Cat. D visibility 1/4 mile. For inoperative MALSR, increase LNAV Cat. C visibility 1/4 mile.

ASOS 119.925	ATLANTA CENTER 133.8 353.7	UNICOM 123.0 (CTAF)
------------------------	--------------------------------------	-------------------------------

SE-4, 22 OCT 2009 to 19 NOV 2009

SE-4, 22 OCT 2009 to 19 NOV 2009



CATEGORY	A	B	C	D
LNAV MDA	1100-1		464 (500-1)	
CIRCLING	1160-1	516 (600-1)	1160-1½ 516 (600-1½)	1360-2¼ 716 (800-2¼)

ROME, GEORGIA
Orig 09071

34°21'N-85°10'W

ROME/RICHARD B. RUSSELL (RMG)
RNAV (GPS) RWY 1