

# RNAV (GPS) RWY 36

TUPELO RGNL (TUP)

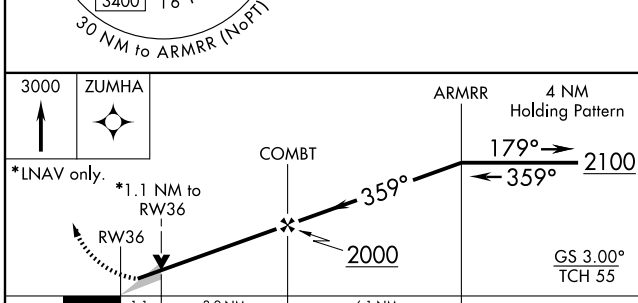
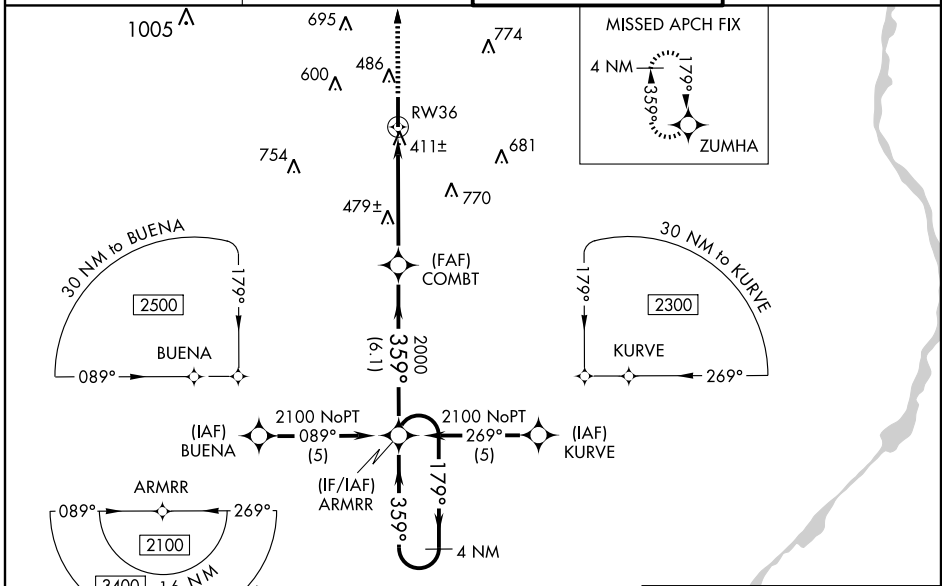
WAAS CH <b>93712</b> <b>W36A</b>	APP CRS <b>359°</b>	Rwy Idg TDZE <b>346</b> Apt Elev <b>346</b>	<b>6500</b> <b>346</b> <b>346</b>
--	------------------------	---	---

**⚠** DME/DME RNP-0.3 NA. When local altimeter setting not received, use Columbus AFB altimeter setting and increase all DA/MDA 120 feet. Increase LNAV/VNAV all Cats. visibility 1/2 mile, LNAV Cat. C 1/2 mile, Cat. D 1/4 mile and Circling Cat. D 1/4 mile. For uncompensated Baro-VNAV systems, LNAV/VNAV NA below -15°C (5°F) or above 48°C (118°F). Baro-VNAV and VDP NA when using Columbus AFB altimeter setting. For inoperative MALS R when using Columbus AFB altimeter setting, increase LPV all Cats. visibility 1/2 mile, and LNAV Cat. D visibility 1/4 mile.

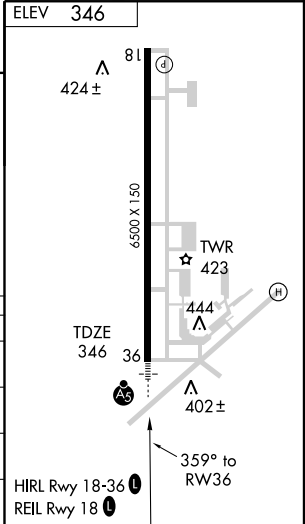


MISSED APPROACH:  
Climb to 3000 direct ZUMHA and hold.

ASOS <b>133.525</b>	MEMPHIS CENTER <b>128.5 279.55</b>	TUPELO TOWER* <b>118.775 (CTAF) 254.275</b>	GND CON <b>121.825 254.275</b>
------------------------	---------------------------------------	--	-----------------------------------



CATEGORY	A	B	C	D
LPV DA	546-1/2		200 (200-1/2)	
LNAV/VNAV DA	692-3/4		346 (400-3/4)	
LNAV MDA	740-1/2		394 (400-1/2)	
CIRCLING	800-1		454 (500-1)	
	454 (500-1)		800-1 1/2	
			454 (500-1 1/2)	
			900-2	
			554 (600-2)	



SC-4, 22 OCT 2009 to 19 NOV 2009

SC-4, 22 OCT 2009 to 19 NOV 2009