

RNAV (GPS) RWY 18

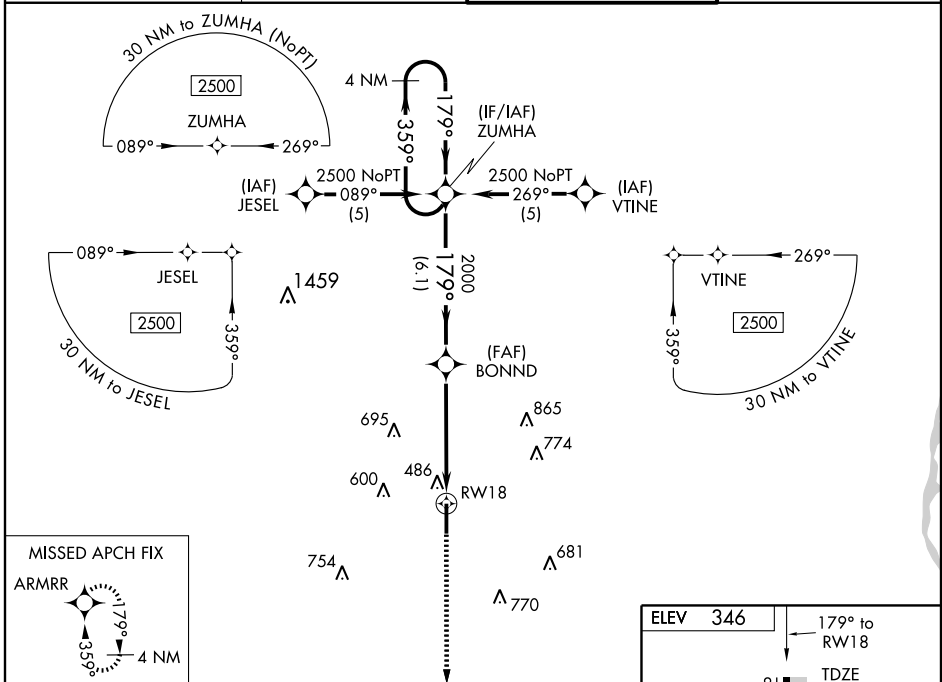
TUPELO RGNL (TUP)

WAAS CH 77712 W18A	APP CRS 179°	Rwy Idg 6500 TDZE 344 Apt Elev 346
--	------------------------	---

⚠ DME/DME RNP-0.3 NA. Visibility reduction by helicopters NA. When local altimeter setting not received, use Columbus AFB altimeter setting and increase all DA/MDA 120 feet. Increase LPV all Cats. visibility ½ mile, LNAV/VNAV all Cats. ¼ mile, LNAV Cat. C ½ mile, Cat. D ¼ mile and Circling Cat. D ¼ mile. For uncompensated Baro-VNAV systems, LNAV/VNAV NA below -15°C (5°F) or above 48°C (118°F). Baro VNAV and VDP NA when using Columbus AFB altimeter setting.

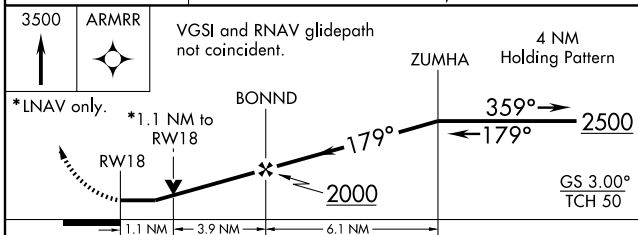
MISSED APPROACH: Climb to 3500 direct ARMRR and hold, continue climb-in-hold to 3500.

ASOS 133.525	MEMPHIS CENTER 128.5 279.55	TUPELO TOWER* 118.775 (CTAF) 0 254.275	GND CON 121.825 254.275
------------------------	---------------------------------------	--	-----------------------------------



SC-4, 22 OCT 2009 to 19 NOV 2009

SC-4, 22 OCT 2009 to 19 NOV 2009



CATEGORY	A	B	C	D
LPV DA	634-1 290 (300-1)			
LNAV/VNAV DA	757-1½ 413 (500-1½)			
LNAV MDA	740-1 396 (400-1)			740-1¼ 396 (400-1¼)
CIRCLING	800-1 454 (500-1)	800-1½ 454 (500-1½)		900-2 554 (600-2)

