

NDB RWY 36

TUPELO RGNL (TUP)

LOM TU 420	APP CRS 358°	Rwy Idg 6500
		TDZE 346
		Apt Elev 346

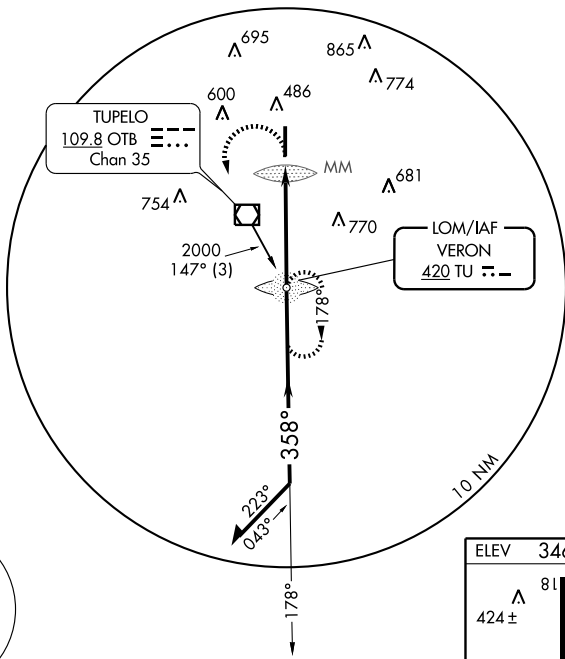


MISSED APPROACH: Climbing left turn to 2000 direct TU LOM and hold.

ASOS 133.525	MEMPHIS CENTER 128.5 279.55	TUPELO TOWER ★ 118.775 (CTAF) 254.275	GND CON 121.825 254.275
------------------------	---------------------------------------	---	-----------------------------------

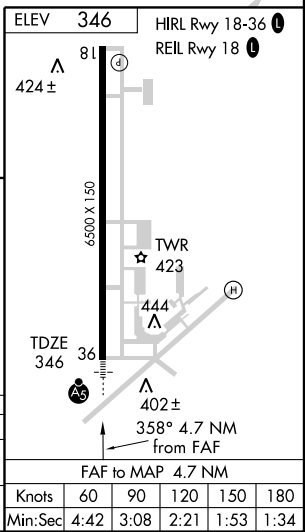
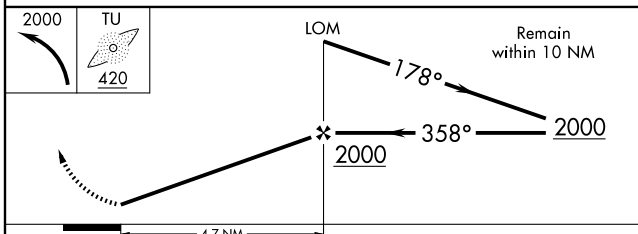
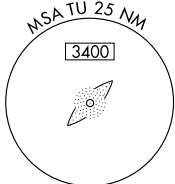
△ 1459

RADAR REQUIRED



SC-4, 22 OCT 2009 to 19 NOV 2009

SC-4, 22 OCT 2009 to 19 NOV 2009



CATEGORY	A	B	C	D
S-36	780-3/4 434 (500-3/4)			780-1 1/4 434 (500-1 1/4)
CIRCLING	800-1 454 (500-1)		800-1 1/2 454 (500-1 1/2)	900-2 554 (600-2)