


VOR or TACAN RWY 3

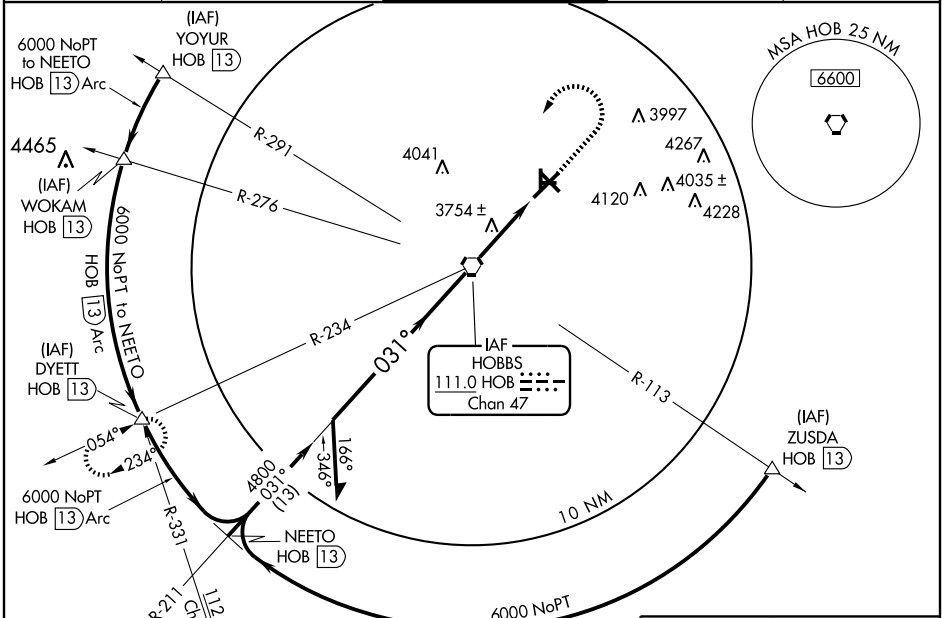
HOBBS/LEA COUNTY RGNL (HOB)

VORTAC HOB 111.0 Chan 47	APP CRS 031°	Rwy Idg 7398 TDZE 3652 Apt Elev 3661
--	------------------------	--

When control tower closed, except for operators with approved weather reporting service, use Cavern City Air Terminal altimeter setting.
For inoperative MALS/R increase Cat D S-3 visibility to 1 1/4 miles.
VDP NA when using Cavern City Air Terminal altimeter setting.

MALS/R 
MISSED APPROACH: Climb to 5000 then climbing left turn to 6000 direct HOB VORTAC, then via HOB R-234 to DYETT INT/13 DME and hold.

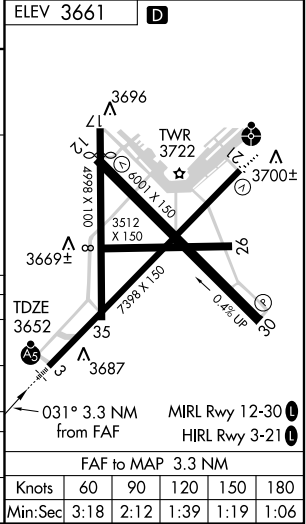
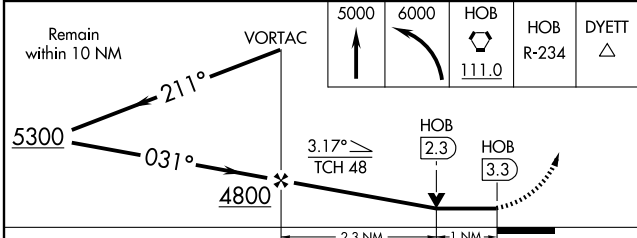
ATIS 119.75	FORT WORTH CENTER 133.1 298.95	HOBBS TOWER * 120.65 (CTAF) 0 317.4	GND CON 121.9	UNICOM 122.95
-----------------------	--	---	-------------------------	-------------------------



SW-1, 22 OCT 2009 to 19 NOV 2009

SW-1, 22 OCT 2009 to 19 NOV 2009

ELEV 3661	D
-----------	----------



CATEGORY	A	B	C	D
S-3	4020-1/2 368 (400-1/2)			4020-1 368 (400-1)
CIRCLING	4120-1 459 (500-1)	4140-1 479 (500-1)	4140-1 1/2 479 (500-1 1/2)	4220-2 559 (600-2)
CAVERN CITY AIR TERMINAL ALTIMETER SETTING MINIMUMS				
S-3	4300-1/2 648 (700-1/2)	4300-1 1/4 648 (700-1 1/4)	4300-1 1/2 648 (700-1 1/2)	4300-1 3/4 648 (700-3/4)
CIRCLING	4400-1 739 (800-1)	4420-1 1/4 759 (800-1 1/4)	4420-2 1/4 759 (800-2 1/4)	4440-2 1/2 779 (800-2 1/2)