

# VOR/DME or TACAN RWY 21

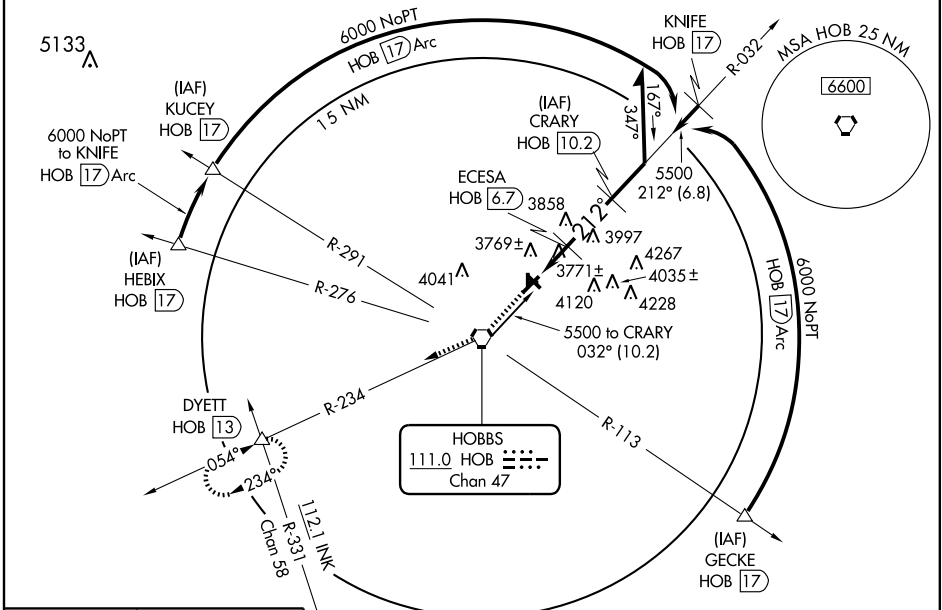
HOBBS/LEA COUNTY RGNL (HOB)

VORTAC HOB <b>111.0</b> Chan 47	APP CRS <b>212°</b>	Rwy Idg TDZE Apt Elev <b>7398</b> <b>3649</b> <b>3661</b>
---------------------------------------	------------------------	--

⚠ When control tower closed, except for operators with approved weather reporting service, use Cavern City Air Terminal altimeter setting.  
 ⚠ Inoperative table does not apply.  
 Straight-in minimums NA when using Cavern City Air Terminal altimeter setting.

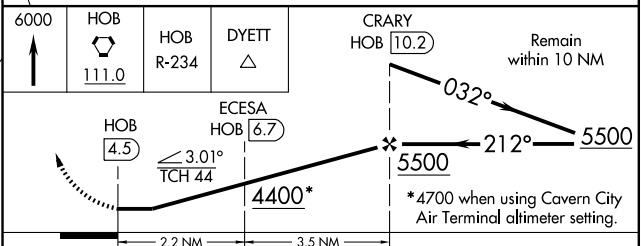
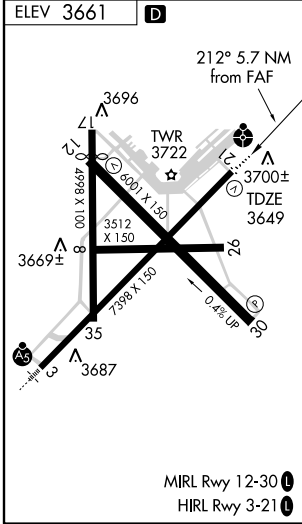
ODALS  
 MISSED APPROACH: Climb to 6000 direct HOB VORTAC then via HOB R-234 to DYETT INT/13 DME and hold.

ATIS <b>119.75</b>	FORT WORTH CENTER <b>133.1 298.95</b>	HOBBS TOWER* <b>120.65</b> (CTAF) <b>317.4</b>	GND CON <b>121.9</b>	UNICOM <b>122.95</b>
-----------------------	--	---	-------------------------	-------------------------



SW-1, 22 OCT 2009 to 19 NOV 2009

SW-1, 22 OCT 2009 to 19 NOV 2009



CATEGORY	A	B	C	D
S-21	4080-1	431 (500-1)	4080-1¼ 431 (500-1¼)	4080-1½ 431 (500-1½)
CIRCLING	4120-1 459 (500-1)	4140-1 479 (500-1)	4140-1½ 479 (500-1½)	4220-2 559 (600-2)
CAVERN CITY AIR TERMINAL ALTIMETER SETTING MINIMUMS				
S-21	NA			
CIRCLING	4400-1 739 (800-1)	4420-1¼ 759 (800-1¼)	4420-2¼ 759 (800-2¼)	4440-2½ 779 (800-2½)