

RNAV (GPS) RWY 30

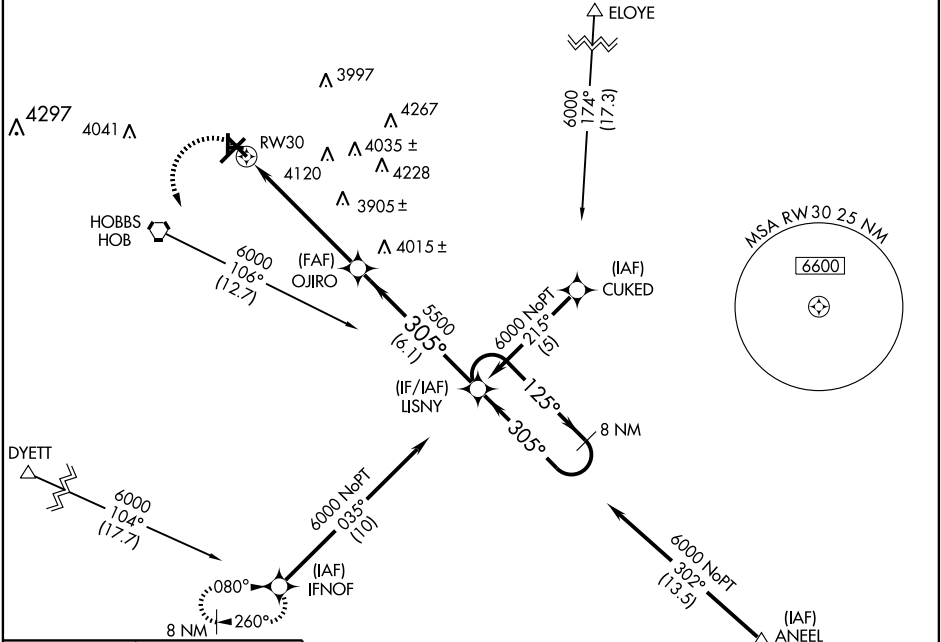
HOBBS/ LEA COUNTY RGNL (HOB)

APP CRS 305°	Rwy Idg 6001
	TDZE 3649
	Apt Elev 3661

D DME/DME RNP-0.3 NA.
A When control tower closed, except for operators with approved weather reporting service, use Cavern City Air Terminal altimeter setting.
 VDP NA with Cavern City Air Terminal altimeter setting.

MISSED APPROACH: Climbing left turn to 6000 direct IFNOF and hold.

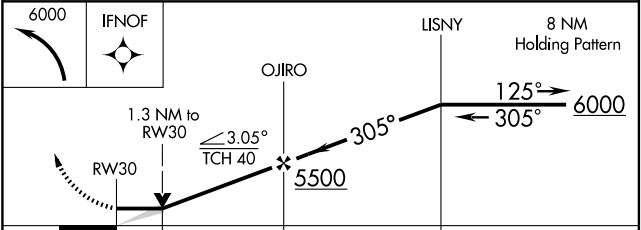
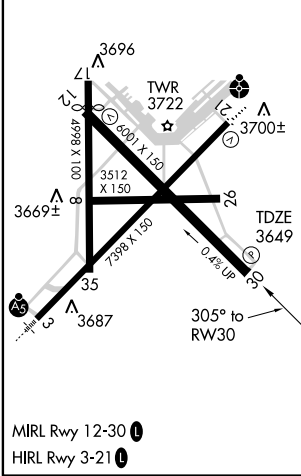
ATIS 119.75	FORT WORTH CENTER 133.1 298.95	HOBBS TOWER * 120.65 (CTAF) 0 317.4	GND CON 121.9	UNICOM 122.95
-----------------------	--	---	-------------------------	-------------------------



SW-1, 22 OCT 2009 to 19 NOV 2009

SW-1, 22 OCT 2009 to 19 NOV 2009

ELEV 3661	D
-----------	----------



CATEGORY	A	B	C	D
RNAV MDA	4100-1	451 (500-1)	4100-1¼ 451 (500-1¼)	4100-1½ 451 (500-1½)
CIRCLING	4120-1 459 (500-1)	4140-1 479 (500-1)	4140-1½ 479 (500-1½)	4220-2 559 (600-2)
CAVERN CITY AIR TERMINAL ALTIMETER SETTING MINIMUMS				
RNAV MDA	4380-1	731 (800-1)	4380-2 731 (800-2)	4380-2¼ 731 (800-2¼)
CIRCLING	4400-1 739 (800-1)	4420-1¼ 759 (800-1¼)	4420-2¼ 759 (800-2¼)	4440-2½ 779 (800-2½)