

# RNAV (GPS) RWY 21

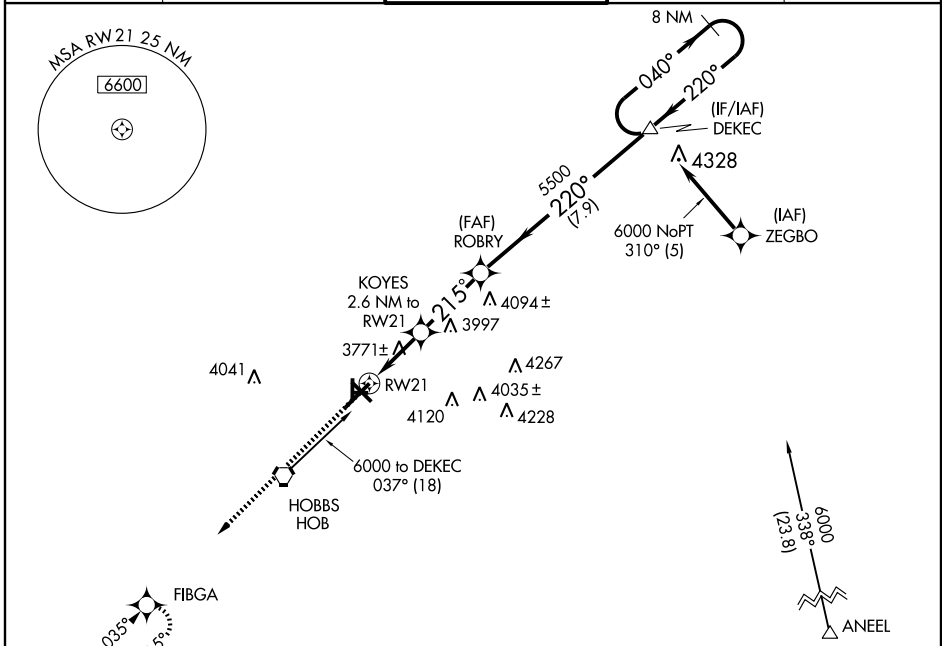
HOBBS/ LEA COUNTY RGNL (HOB)

APP CRS <b>215°</b>	Rwy Idg <b>7398</b>
	TDZE <b>3649</b>
	Apt Elev <b>3661</b>

**▼** DME/DME RNP-0.3 NA.  
Inoperative table does not apply to ODALS Rwy 21.  
**▲** When control tower closed, except for operators with approved weather reporting service, use Cavern City Air Terminal altimeter setting.

ODALS  
MISSED APPROACH: Climb to 5600  
direct FIBGA and hold.

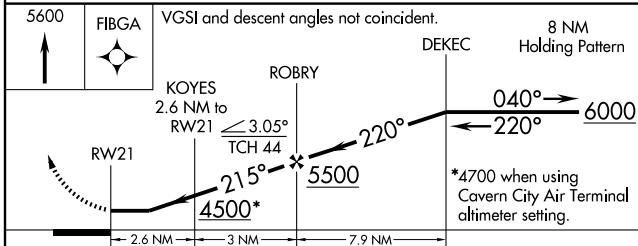
ATIS <b>119.75</b>	FORT WORTH CENTER <b>133.1 298.95</b>	HOBBS TOWER ★ <b>120.65 (CTAF) 317.4</b>	GND CON <b>121.9</b>	UNICOM <b>122.95</b>
-----------------------	--	---	-------------------------	-------------------------



SW-1, 22 OCT 2009 to 19 NOV 2009

SW-1, 22 OCT 2009 to 19 NOV 2009

5600 FIBGA VGS1 and descent angles not coincident.



CATEGORY	A	B	C	D
LNVA MDA	4080-1	431 (500-1)	4080-1½ 431 (500-1½)	4080-1½ 431 (500-1½)
CIRCLING	4120-1 459 (500-1)	4140-1 479 (500-1)	4140-1½ 479 (500-1½)	4220-2 559 (600-2)
CAVERN CITY AIR TERMINAL ALTIMETER SETTING MINIMUMS				
LNVA MDA	4360-1	711 (700-1)	4360-2 711 (700-2)	4360-2½ 711 (700-2½)
CIRCLING	4400-1 739 (800-1)	4420-1½ 759 (800-1½)	4420-2½ 759 (800-2½)	4440-2½ 779 (800-2½)

