

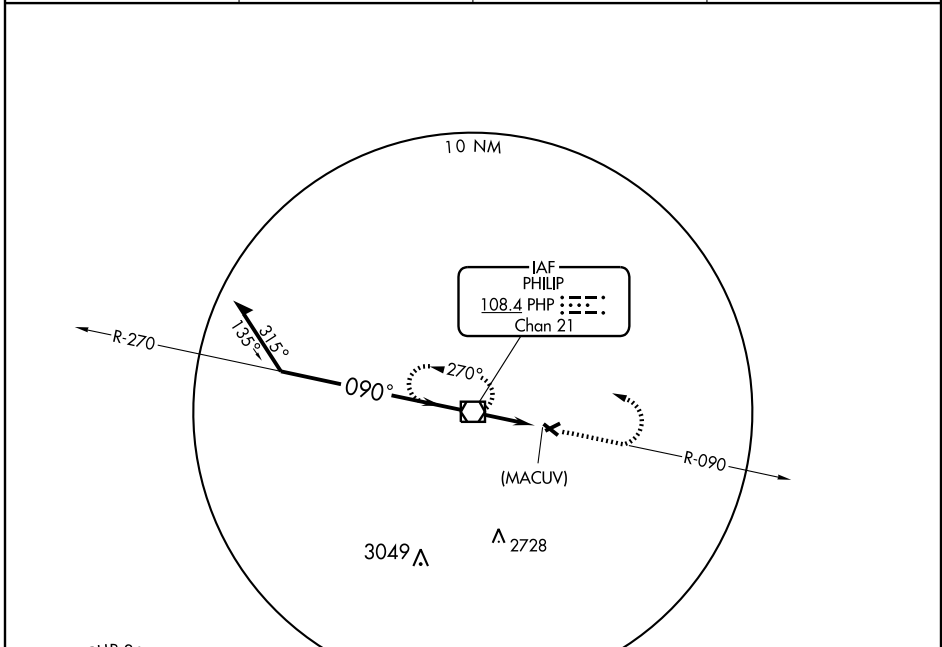
PHILIP, SOUTH DAKOTA

AL-850 (FAA)

# VOR or GPS-A PHILIP (PHP)

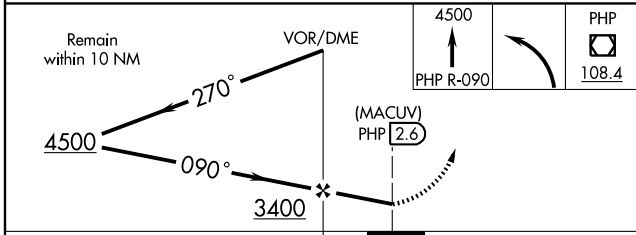
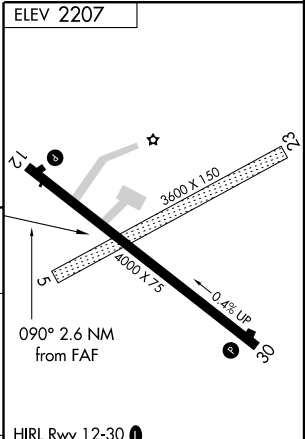
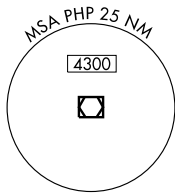
VOR/DME PHP <b>108.4</b> Chan <b>21</b>	APP CRS <b>090°</b>	Rwy Idg TDZE Apt Elev <b>N/A</b> <b>N/A</b> <b>2207</b>
---	------------------------	--

<p><b>▲ NA</b></p>		<p>MISSED APPROACH: Climb to 4500 via PHP R-090, then left turn direct PHP VOR/DME and hold.</p>	
ASOS <b>118.375</b>	DENVER CENTER <b>127.95 338.2</b>	HURON RADIO <b>122.4</b>	UNICOM <b>122.8 (CTAF) 0</b>



NC-1, 22 OCT 2009 to 19 NOV 2009

NC-1, 22 OCT 2009 to 19 NOV 2009



CATEGORY	FAF to MAP 2.6 NM					
	A	B	C	D		
CIRCLING	2720-1 513 (600-1)	2740-1 533 (600-1)	2780-1 1/2 573 (600-1 1/2)	2820-2 613 (700-2)		
	Knots	60	90	120	150	180
	Min:Sec	2:36	1:44	1:18	1:02	0:52

PHILIP, SOUTH DAKOTA  
Amdt 11A 08101

44°03'N-101°36'W

# VOR or GPS-A PHILIP (PHP)