

OLD TOWN, MAINE

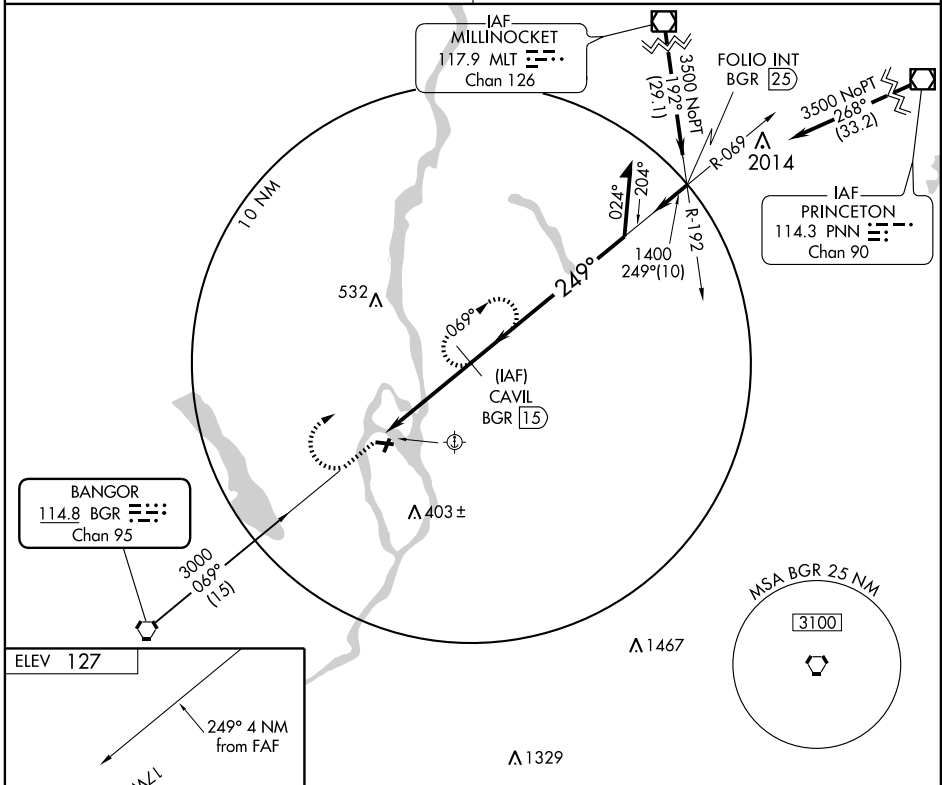
AL-849 (FAA)

VORTAC BGR 114.8 Chan 95	APP CRS 249°	Rwy Idg TDZE Apt Elev	3199 126 127
---------------------------------------	------------------------	-----------------------------	---

VOR/DME RWY 22

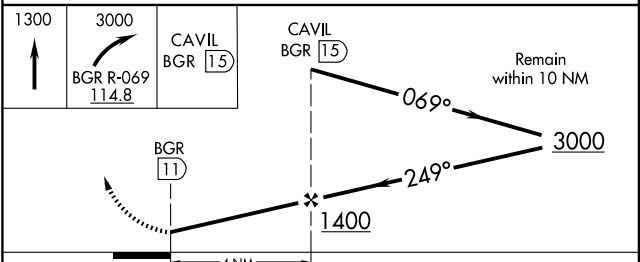
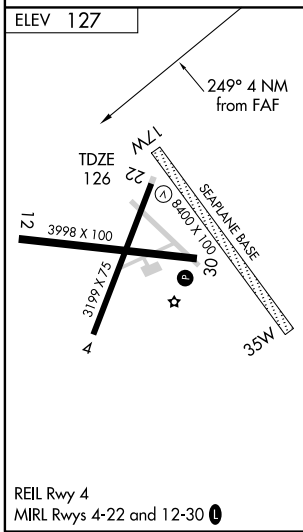
OLD TOWN/ DEWITT FIELD OLD TOWN MUNI (OLD)

<p>▼ ▲ NA</p> <p>Use Bangor Intl altimeter setting.</p>	<p>MISSED APPROACH: Climb to 1300 then climbing right turn to 3000 via BGR R-069 to CAVIL 15 DME and hold.</p>
<p>BANGOR APP CON 124.5 251.125</p>	<p>UNICOM 122.8 (CTAF) 1</p>



NE-1, 22 OCT 2009 to 19 NOV 2009

NE-1, 22 OCT 2009 to 19 NOV 2009



CATEGORY	A	B	C	D
S-22	600-1	474 (500-1)	600-1¼ 474 (500-1¼)	NA
CIRCLING	640-1 513 (600-1)	700-1 573 (600-1)	800-2 673 (700-2)	NA

OLD TOWN, MAINE
Amdt 5 09239

OLD TOWN/ DEWITT FIELD OLD TOWN MUNI (OLD)
44°57'N-68°40'W
VOR/DME RWY 22