

OLD TOWN, MAINE

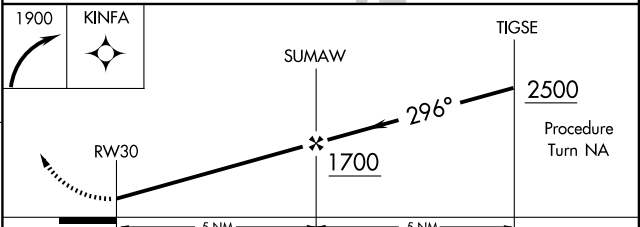
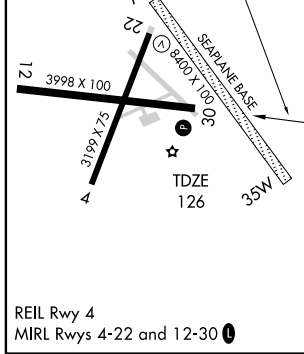
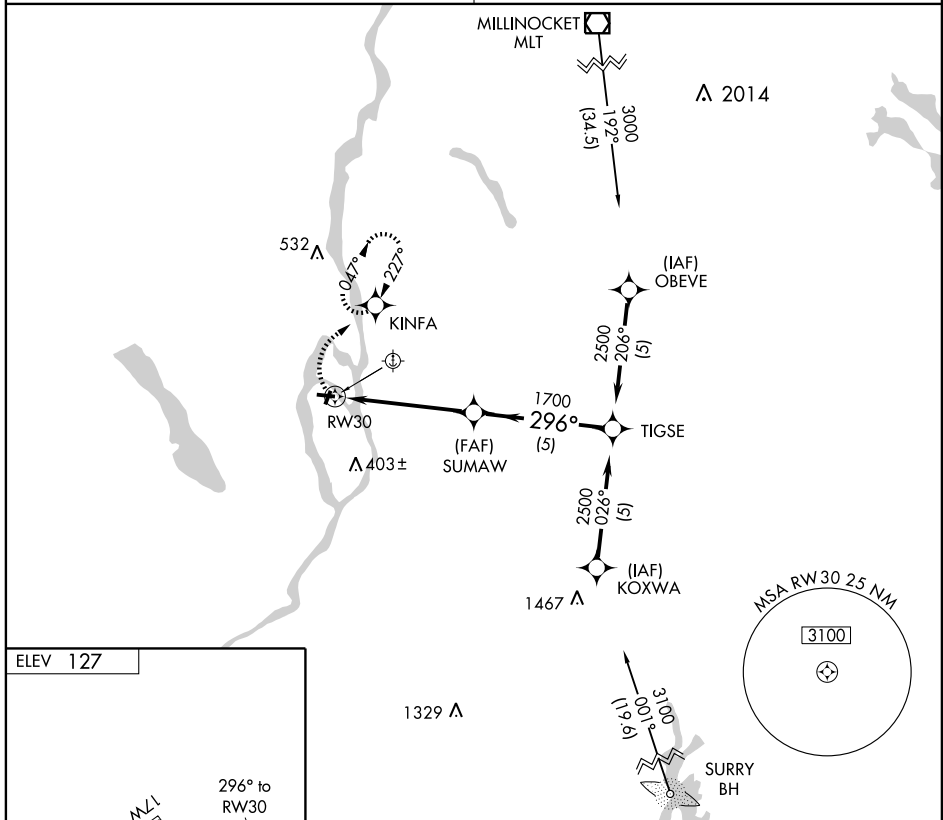
AL-849 (FAA)

GPS RWY 30

OLD TOWN/DEWITT FIELD OLD TOWN MUNI (OLD)

APP CRS 296°	Rwy Idg 3998
	TDZE 126
	Apt Elev 127

<p>▼ Use Bangor Intl atimeter setting.</p> <p>▲ NA</p>	<p>MISSED APPROACH: Climbing right turn to 1900 direct KINFA WP and hold.</p>
<p>BANGOR APP CON 124.5 251.125</p>	<p>UNICOM 122.8 (CTAF)</p>



CATEGORY	A	B	C	D
S-30	620-1	494 (500-1)	620-1¼ 494 (500-1¼)	NA
CIRCLING	640-1 513 (600-1)	700-1 573 (600-1)	800-2 673 (700-2)	NA

OLD TOWN, MAINE
Orig 09239

OLD TOWN/DEWITT FIELD OLD TOWN MUNI (OLD)
44°57'N-68°40'W

GPS RWY 30

NE-1, 22 OCT 2009 to 19 NOV 2009

NE-1, 22 OCT 2009 to 19 NOV 2009