

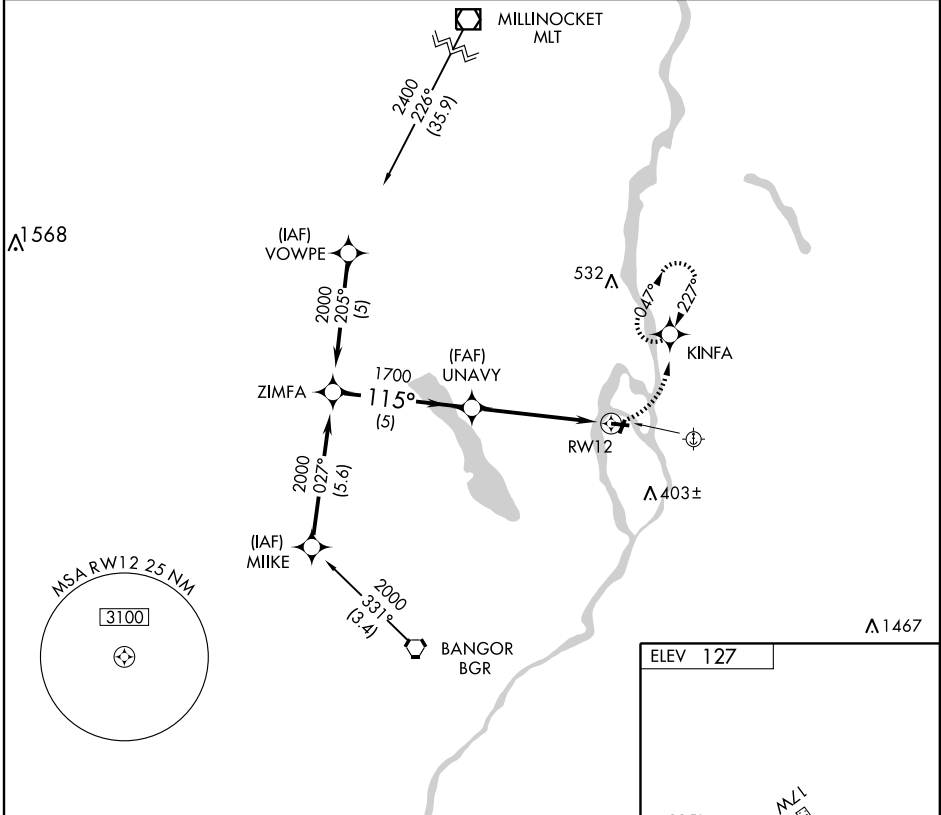
GPS RWY 12

OLD TOWN/DEWITT FIELD OLD TOWN MUNI (OLD)

APP CRS 115°	Rwy Idg 3998
	TDZE 126
	Apt Elev 127

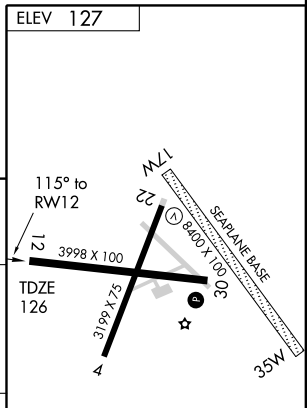
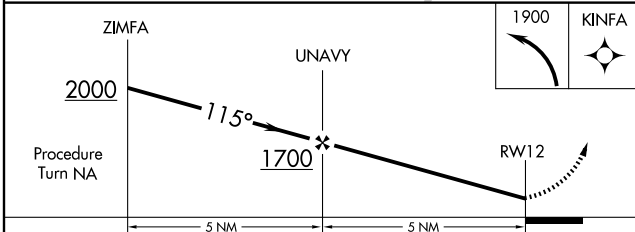
NA Use Bangor Intl altimeter setting.	MISSED APPROACH: Climbing left turn to 1900 direct KINFA WP and hold.
--	--

BANGOR APP CON 124.5 251.125	UNICOM 122.8 (CTAF)
--	-------------------------------



NE-1, 22 OCT 2009 to 19 NOV 2009

NE-1, 22 OCT 2009 to 19 NOV 2009



CATEGORY	A	B	C	D
S-12	640-1 514 (600-1)		640-1½ 514 (600-1½)	NA
CIRCLING	640-1 513 (600-1)	700-1 573 (600-1)	800-2 673 (700-2)	NA

REIL Rwy 4
 MIRL Rwy 4-22 and 12-30

GPS RWY 12