

HARLINGEN, TEXAS

AL-827 (FAA)

VOR/DME or TACAN Y RWY 31

HARLINGEN/ VALLEY INTL (HRL)

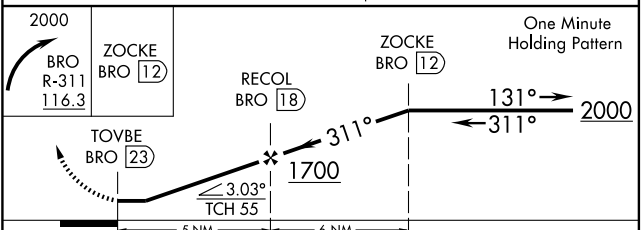
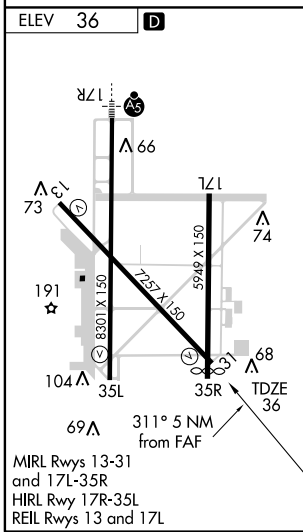
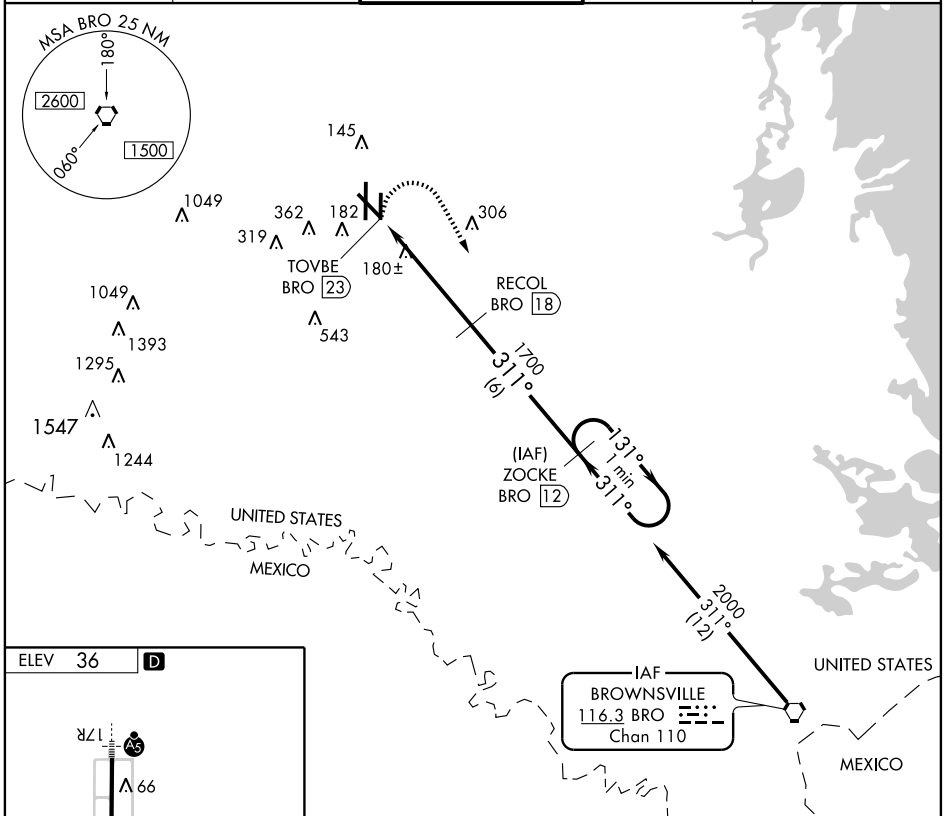
VORTAC BRO 116.3 Chan 110	APP CRS 311°	Rwy Idg 7257 TDZE 36 Apt Elev 36
---	------------------------	---

MISSED APPROACH: Climbing right turn to 2000 via BRO R-311 to ZOCKE/12 DME and hold.

ATIS 124.85	VALLEY APP CON 120.7 239.0	HARLINGEN TOWER ★ 119.3 (CTAF) 317.6	GND CON 121.7	UNICOM 122.95
-----------------------	--------------------------------------	--	-------------------------	-------------------------

SC-3, 22 OCT 2009 to 19 NOV 2009

SC-3, 22 OCT 2009 to 19 NOV 2009



CATEGORY	A	B	C	D
S-31	620-1 584 (600-1)	620-1¼ 584 (600-1¼)	620-1½ 584 (600-1½)	620-1¾ 584 (600-1¾)
CIRCLING	620-1 584 (600-1)	620-1¼ 584 (600-1¼)	620-1½ 584 (600-1½)	680-2 644 (700-2)

HARLINGEN, TEXAS
Amdt 1 09183

26°14'N-97°39'W

HARLINGEN/ VALLEY INTL (HRL)

VOR/DME or TACAN Y RWY 31