

HARLINGEN, TEXAS

AL-827 (FAA)

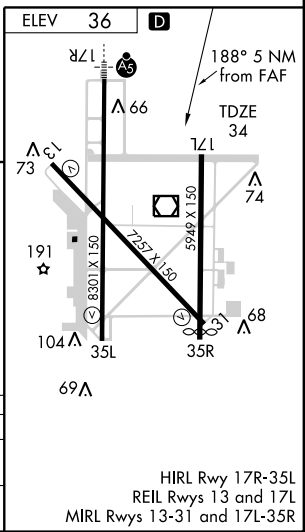
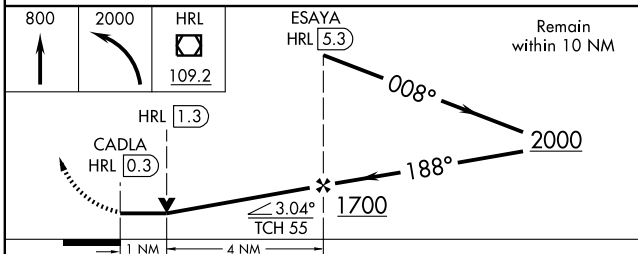
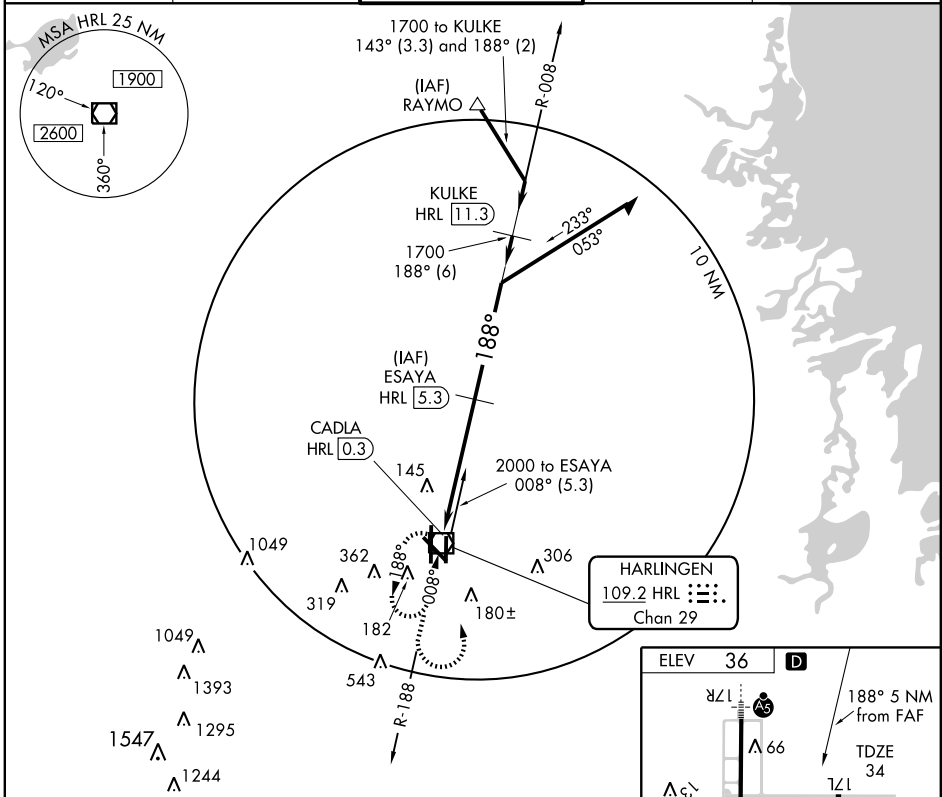
VOR/DME HRL	APP CRS	Rwy Idg	5949
109.2	188°	TDZE	34
Chan 29		Apt Elev	36

VOR/DME RWY 17L

HARLINGEN/ VALLEY INTL (HRL)

MISSED APPROACH: Climb to 800 then climbing left turn to 2000 direct HRL VOR/DME and hold.

ATIS 124.85	VALLEY APP CON 120.7 239.0	HARLINGEN TOWER ★ 119.3 (CTAF) 0 317.6	GND CON 121.7	UNICOM 122.95
-----------------------	--------------------------------------	--	-------------------------	-------------------------



CATEGORY	A	B	C	D
S-17L	400-1	366 (400-1)		400-1¼ 366 (400-1¼)
CIRCLING	500-1	464 (500-1)	500-1½ 464 (500-1½)	680-2 644 (700-2)

HARLINGEN, TEXAS
Orig 09183

26°14'N-97°39'W

HARLINGEN/ VALLEY INTL (HRL)
VOR/DME RWY 17L

HRL Rwy 17R-35L
REIL Rwy 13 and 17L
MIRL Rwy 13-31 and 17L-35R

SC-3, 22 OCT 2009 to 19 NOV 2009

SC-3, 22 OCT 2009 to 19 NOV 2009