

HARLINGEN, TEXAS

AL-827 (FAA)

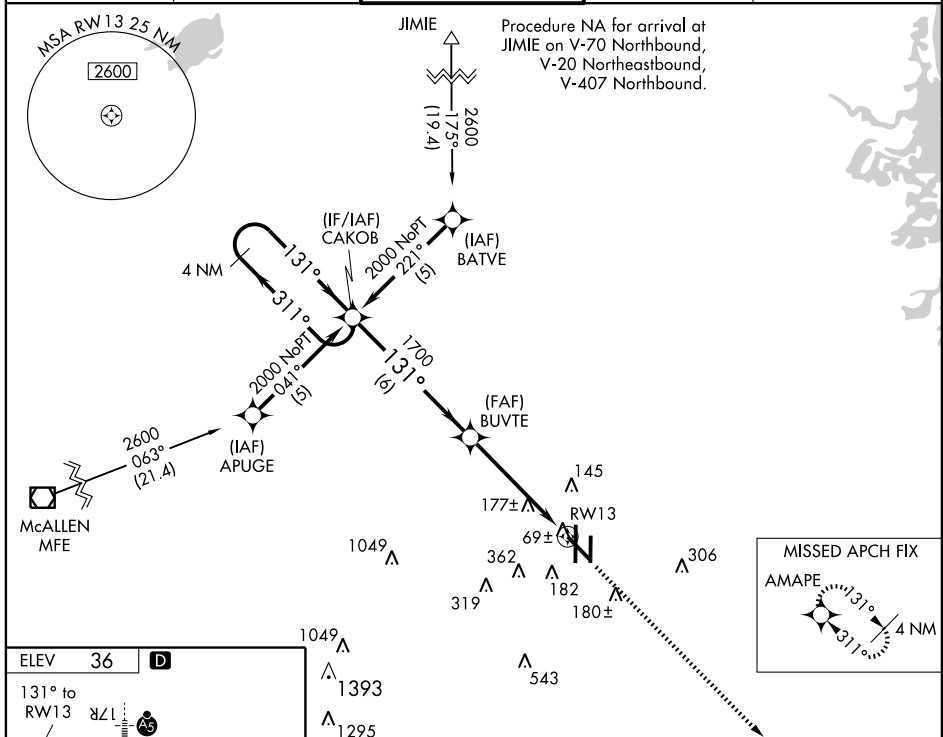
RNAV (GPS) RWY 13

HARLINGEN/VALLEY INTL (HRL)

APP CRS	Rwy Idg	7257
131°	TDZE	35
	Apt Elev	36

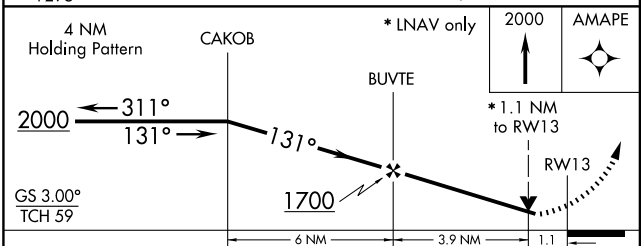
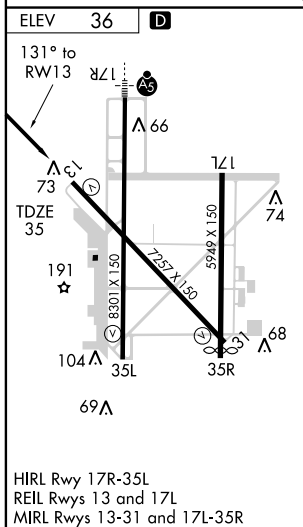
	Baro-VNAV NA below -15°C (5°F). GPS or RNP-0.3 required. DME/DME RNP-0.3 NA.	MISSED APPROACH: Climb to 2000 direct AMAPE WP and hold.
--	--	---

ATIS 124.85	VALLEY APP CON 120.7 239.0	HARLINGEN TOWER ★ 119.3 (CTAF) 0 317.6	GND CON 121.7	UNICOM 122.95
-----------------------	--------------------------------------	--	-------------------------	-------------------------



SC-3, 22 OCT 2009 to 19 NOV 2009

SC-3, 22 OCT 2009 to 19 NOV 2009



CATEGORY	A	B	C	D
GLS PA DA	NA			
LNAV/VNAV DA	360-1 325 (400-1)			
LNAV MDA	440-1	405 (500-1)	440-1¼	405 (500-1¼)
CIRCLING	500-1	464 (500-1)	500-1½	680-2 644 (700-2)

HARLINGEN, TEXAS
Amdt 1 09183

26° 14' N-97° 39' W

HARLINGEN/VALLEY INTL (HRL)

RNAV (GPS) RWY 13