

# RNAV (GPS) RWY 28

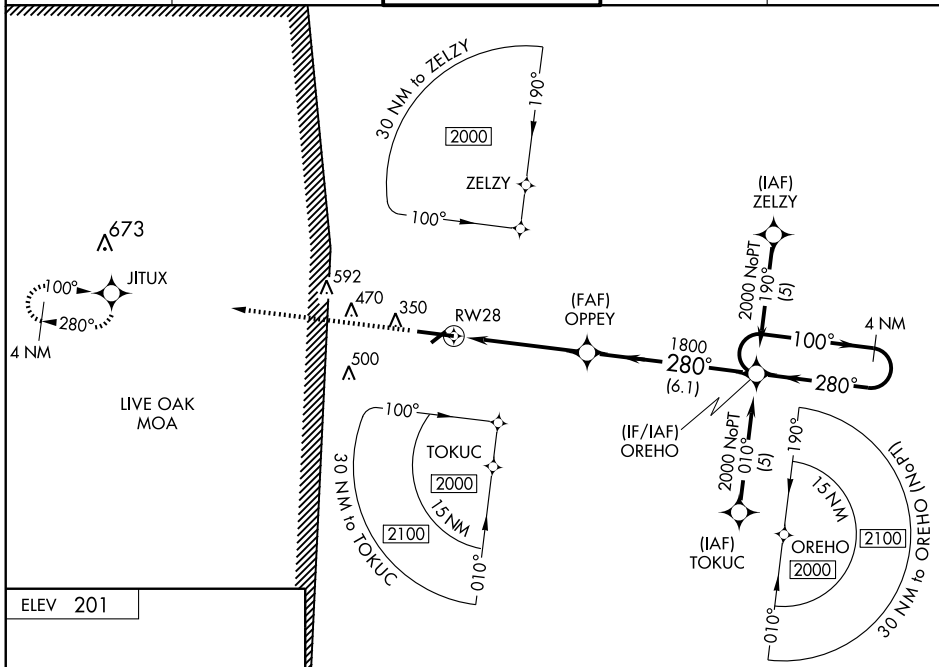
LAKE CITY MUNI (LCQ)

WAAS CH <b>82008</b> <b>W28A</b>	APP CRS <b>280°</b>	Rwy Idg TDZE Apt Elev	<b>8003</b> <b>196</b> <b>201</b>
--	------------------------	-----------------------------	---

For uncompensated Baro-VNAV systems, LNAV/VNAV NA below -15°C (5°F) or above 48°C (118°F). DME/DME RNP-0.3 NA. Visibility reduction by helicopters NA. When local altimeter setting not received, use Gainesville altimeter setting and increase LPV DA to 624, LNAV/VNAV DA to 640, and all MDA 100 feet; increase LPV, LNAV/VNAV, and LNAV Cats. C and D visibility ¼ mile. Baro-VNAV and VDP NA when using Gainesville altimeter setting.

MISSED APPROACH: Climb to 2000 direct JITUX and hold.

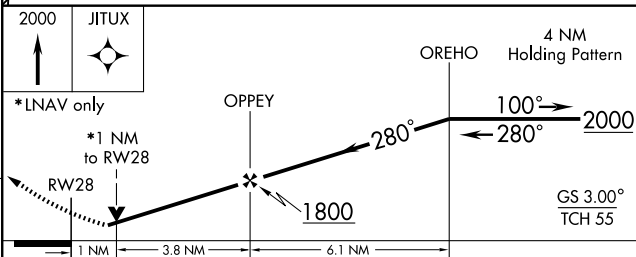
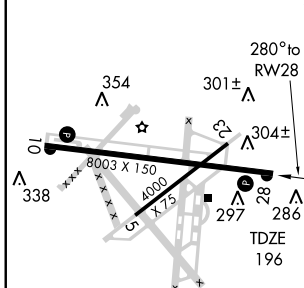
AWOS-3 <b>120.675</b>	JACKSONVILLE CENTER <b>125.375 254.325</b>	LAKE CITY TOWER ★ <b>119.2 (CTAF) 314.6</b>	GND CON <b>121.9</b>	UNICOM <b>122.7</b> 📻
--------------------------	---	--	-------------------------	--------------------------



SE-3, 22 OCT 2009 to 19 NOV 2009

SE-3, 22 OCT 2009 to 19 NOV 2009

ELEV 201



CATEGORY	A	B	C	D
LPV DA		540-1¼	344 (400-1¼)	
LNAV/VNAV DA		556-1¼	360 (400-1¼)	
LNAV MDA		560-1	364 (400-1)	560-1¼ 364 (400-1¼)
CIRCLING	660-1	459 (500-1)	660-1½ 459 (500-1½)	760-2 559 (600-2)

REIL Rwy 28 📻  
MIRL Rwy 5-23 and 10-28 📻