

VOR/DME SSM 112.2 Chan 59	APP CRS 218°	Rwy Idg TDZE Apt Elev N/A N/A 800
---	------------------------	---

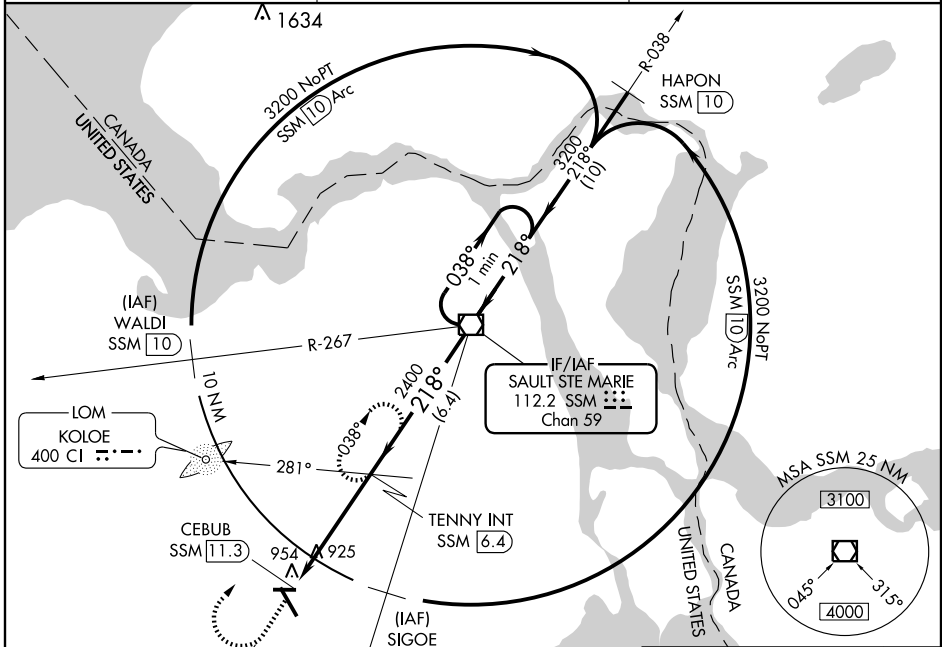
VOR-A

SAULT STE MARIE/ CHIPPEWA COUNTY INTL (CIU)

▼ DME or ADF REQUIRED. When local altimeter setting not received, use Sault Ste Marie Muni/Sanderson Field altimeter setting and increase all MDA 60 feet.

▲ MISSED APPROACH: Climb to 1500 then climbing right turn to 2400 via SSM R-218 to TENNY Int/6.4 DME and hold.

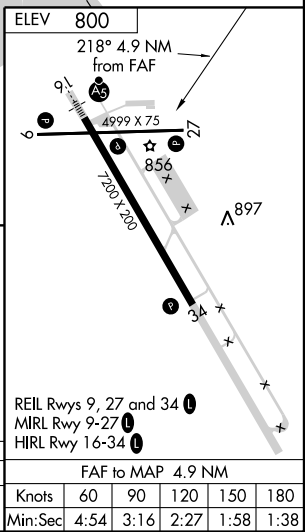
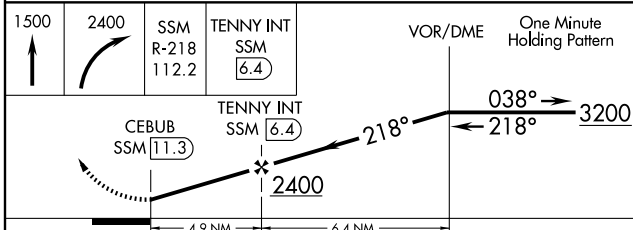
AWOS-3 127.575	TORONTO CENTER 132.65 344.5	UNICOM 123.0 (CTAF)
--------------------------	---------------------------------------	-------------------------------



EC-1, 22 OCT 2009 to 19 NOV 2009

EC-1, 22 OCT 2009 to 19 NOV 2009

NoPT for arrivals on SSM VOR/DME airway Radials 320 CW 115



CATEGORY	A	B	C	D	FAF to MAP 4.9 NM					
	1260-1	460 (500-1)	1260-1½ 460 (500-1½)	1360-2 560 (600-2)	Knots	60	90	120	150	180
CIRCLING					Min:Sec	4:54	3:16	2:27	1:58	1:38