

RNAV (GPS) RWY 9

SAULT STE MARIE/ CHIPPEWA COUNTY INTL (CIU)

APP CRS 096°	Rwy Idg 4999
	TDZE 795
	Apt Elev 800

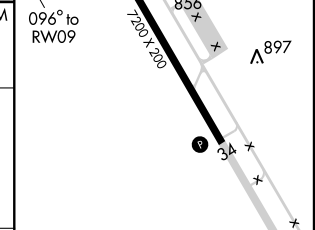
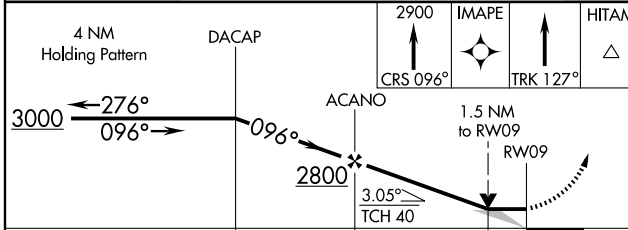
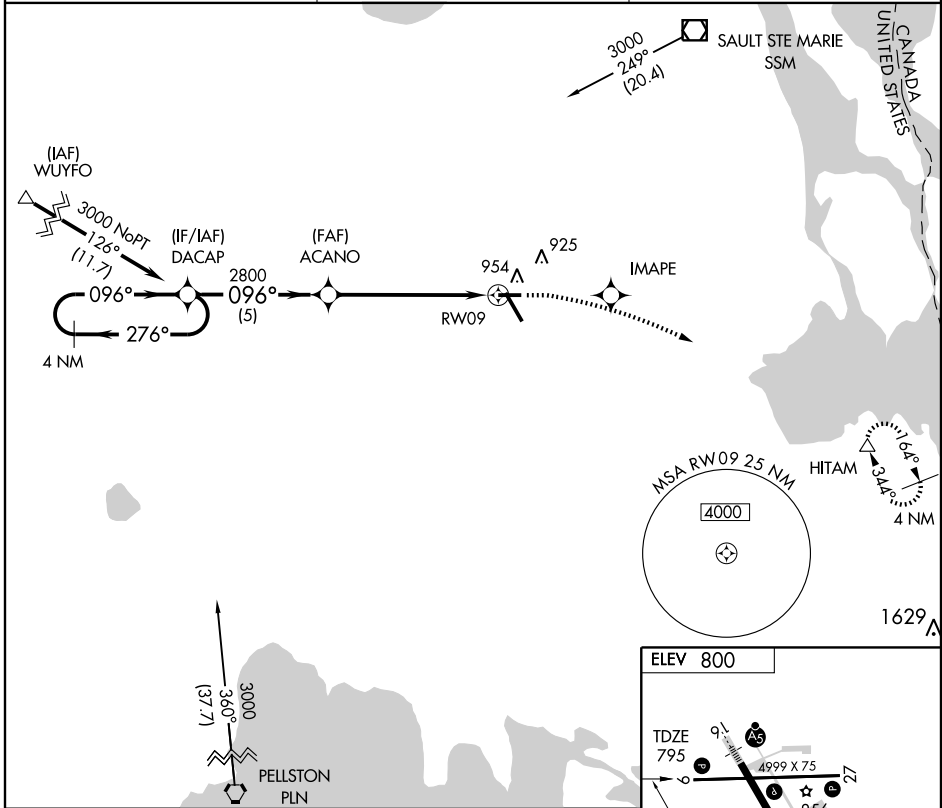
NA Straight-in minimums NA at night. GPS or RNP-0.3 required. DME/DME RNP-0.3 NA.

MISSED APPROACH: Climb to 2900 via 096° course to IMAPE WP and via 127° track to HITAM WP and hold.

AWOS-3
127.575

TORONTO CENTER
132.65 344.5

UNICOM
123.0 (CTAF)



CATEGORY	A	B	C	D
RNAV MDA	1320 - 1	525 (600-1)	1320 - 1½ 525 (600-1½)	1320 - 1¾ 525 (600-1¾)
CIRCLING	1320 - 1	520 (600-1)	1320 - 1½ 520 (600-1½)	1360 - 2 560 (600-2)

REIL Rwy 9, 27 and 34
MIRL Rwy 9-27
HIRL Rwy 16-34

EC-1, 22 OCT 2009 to 19 NOV 2009

EC-1, 22 OCT 2009 to 19 NOV 2009