

WAAS CH <b>56315</b> <b>W34A</b>	APP CRS <b>336°</b>	Rwy Idg TDZE Apt Elev	<b>7200</b> <b>796</b> <b>800</b>
--	------------------------	-----------------------------	---

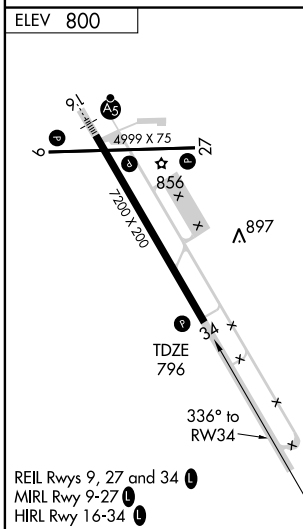
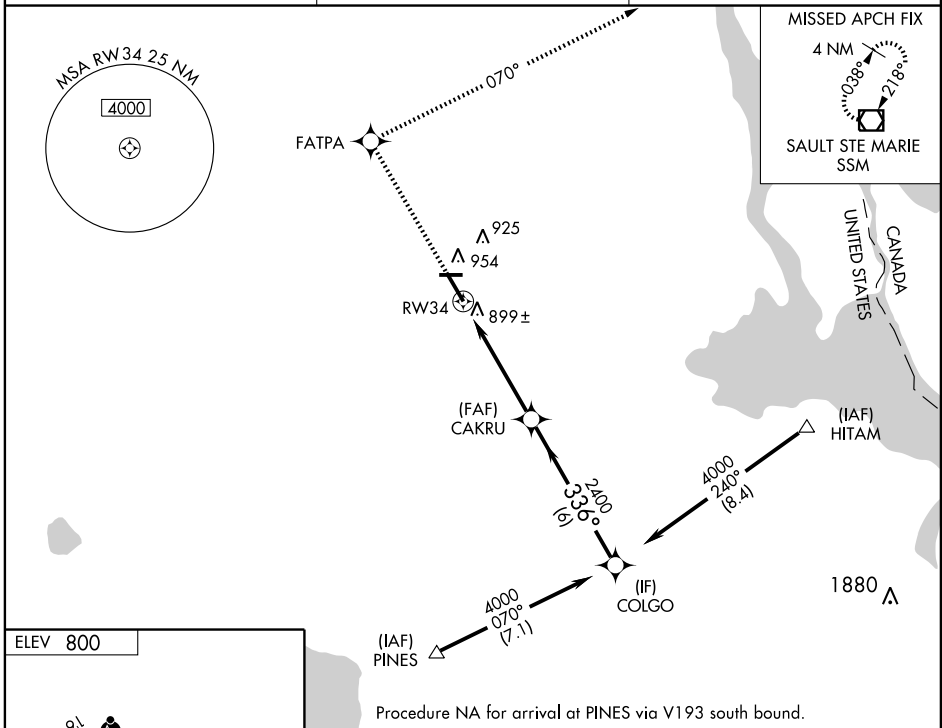
# RNAV (GPS) RWY 34

SAULT STE MARIE/ CHIPPEWA COUNTY INTL (CIU)

For uncompensated Baro-VNAV systems, LNAV/VNAV NA below -16°C (4°F) or above 47°C (116°F). DME/DME RNP-0.3 NA. When local altimeter setting not received, use Sault Ste Marie Muni/Sanderson Field altimeter setting and increase all DA 45 feet and all MDA 60 feet; increase LNAV Cat D visibility ¼ mile. Baro-VNAV and VDP NA when using Sault Ste Marie Muni/Sanderson Field altimeter setting.

MISSED APPROACH: Climb to 3000 direct FATPA and right turn via track 070° to SSM VOR/DME and hold.

AWOS-3 <b>127.575</b>	TORONTO CENTER <b>132.65 344.5</b>	UNICOM <b>123.0 (CTAF)</b>
--------------------------	---------------------------------------	-------------------------------



Procedure NA for arrival at PINES via V193 south bound.

COLGO	3000	FATPA	SSM	
Procedure Turn NA	↑	✦	☐	
GS 3.00° TCH 40	TRK 070°			
	6 NM	3.7 NM	1.2 NM	
CATEGORY	A	B	C	D
LPV DA		1046-1	250 (300-1)	
LNAV/ DA VNAV		1198-1½	402 (400-1½)	
LNAV MDA	1200-1	404 (400-1)	1200-1¼	404 (400-1¼)
CIRCLING	1260-1	460 (500-1)	1260-1½	1360-2
			460 (500-1½)	560 (600-2)

EC-1, 22 OCT 2009 to 19 NOV 2009

EC-1, 22 OCT 2009 to 19 NOV 2009