

WAAS CH 69215 W16A	APP CRS 156°	Rwy Idg 7200 TDZE 799 Apr Elev 800
--	------------------------	--

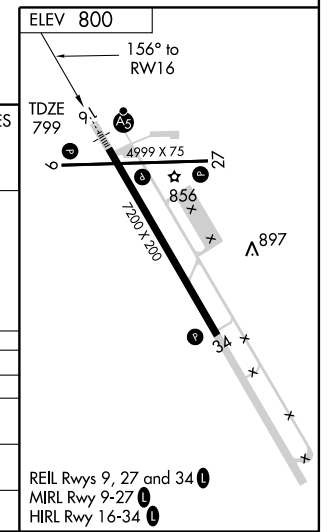
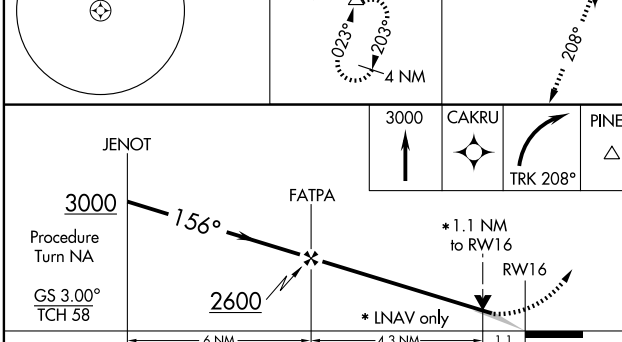
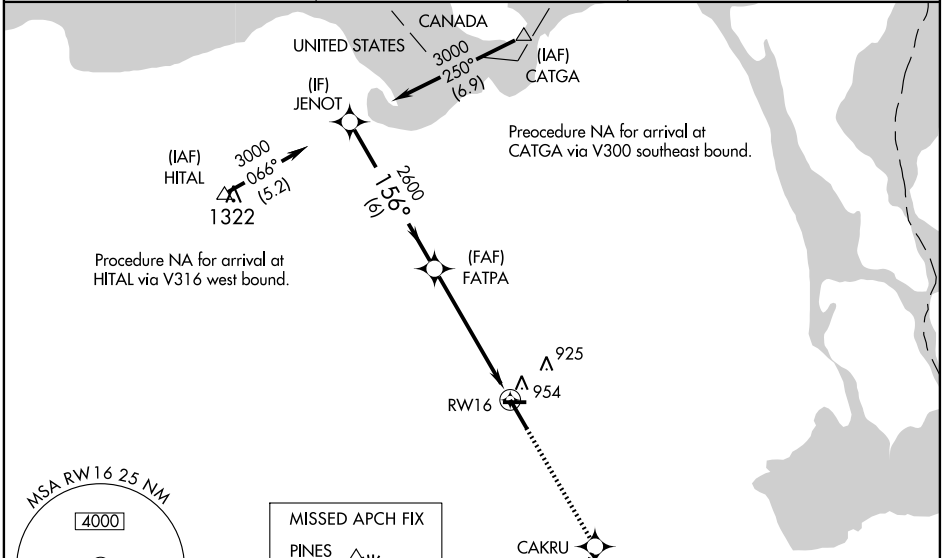
RNAV (GPS) RWY 16

SAULT STE MARIE/CHIPPEWA COUNTY INTL (CIU)

For uncompensated Baro-VNAV systems, LNAV/VNAV NA below -1.6°C (4°F) or above 47°C (116°F). DME/DME RNP-0.3 NA. When local altimeter setting not received, use Sault Ste Marie Muni/Sanderson Field altimeter setting and increase all DA 45 feet and all MDA 60 feet. Baro-VNAV and VDP NA when using Sault Ste Marie Muni/Sanderson Field altimeter setting. For inoperative MALSRS, increase LPV all Cats, LNAV/VNAV all Cats and LNAV Cats A/B/C ½ mile, increase LNAV Cat D ¼ mile. For inoperative MALSRS, when using Sault Ste Marie Muni/Sanderson Field altimeter setting, increase LPV all Cats, LNAV/VNAV all Cats and LNAV all Cats ½ mile.

MALSRS
MISSED APPROACH: Climb to 3000 direct CAKRU and right turn via track 208° to PINES and hold.

AWOS-3 127.575	TORONTO CENTER 132.65 344.5	UNICOM 123.0 (CTAF)
--------------------------	---------------------------------------	-------------------------------



CATEGORY	A	B	C	D
LPV DA	1068-½ 269 (300-½)			
LNAV/VNAV DA	1204-1 405 (500-1)			
LNAV MDA	1220-½ 421 (500-½)	1220-¾ 421 (500-¾)	1260-1½ 460 (500-1½)	1220-1 421 (500-1)
CIRCLING	1260-1 460 (500-1)	1260-1½ 460 (500-1½)	1360-2 560 (600-2)	

EC-1, 22 OCT 2009 to 19 NOV 2009

EC-1, 22 OCT 2009 to 19 NOV 2009