

I LS RWY 16

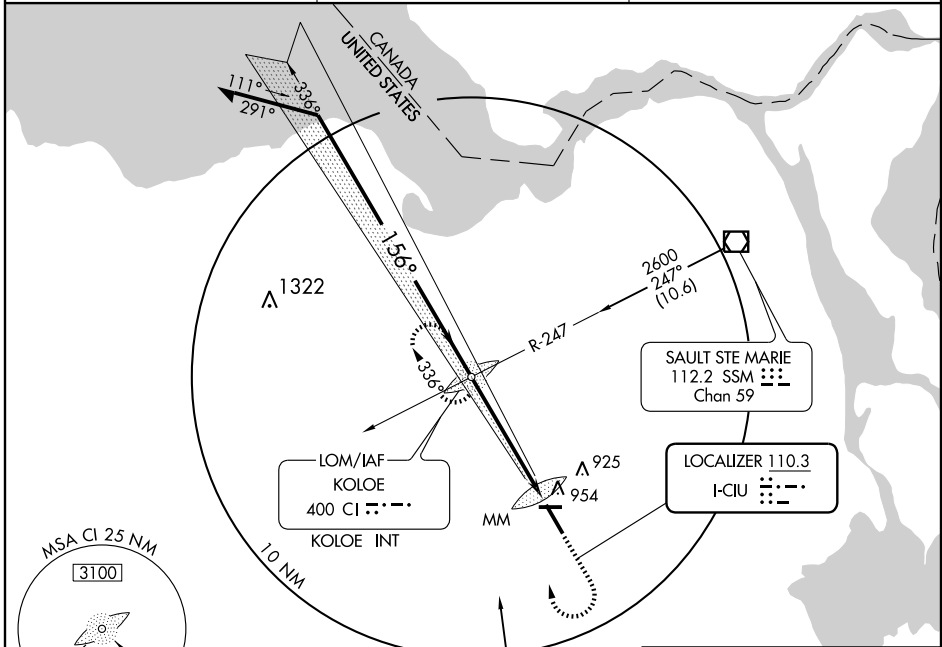
SAULT STE MARIE/CHIPPEWA COUNTY INTL (CIU)

LOC I-CIU 110.3	APP CRS 156°	Rwy Idg 7200
		TDZE 799
		Apt Elev 800

△ NA	I LS unusable from MM inbound.	MALSRL AS
-------------	--------------------------------	---------------------

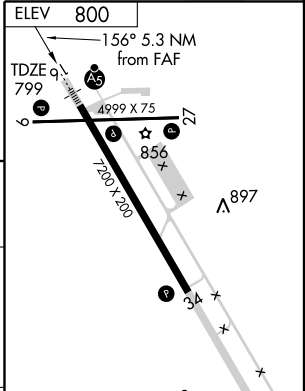
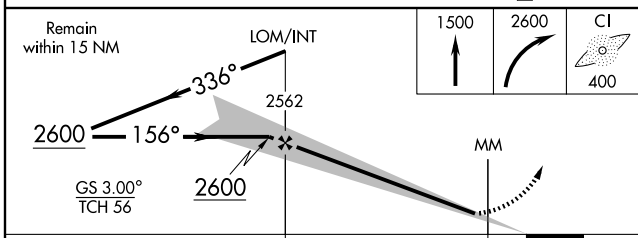
MISSED APPROACH: Climb to 1500 then climbing right turn to 2600 direct CI LOM/Int and hold. (TACAN aircraft climb to 5000 via 160° heading and SSM R-201 to PINES Int/24 DME and hold South, right turns, 021° inbound).

AWOS-3 127.575	TORONTO CENTER 132.65 344.5	UNICOM 123.0 (CTAF)
--------------------------	---------------------------------------	-------------------------------



EC-1, 22 OCT 2009 to 19 NOV 2009

EC-1, 22 OCT 2009 to 19 NOV 2009



CATEGORY	A	B	C	D	E
S-ILS 16	1049-1/2	250 (300-1/2)		1049-3/4	250 (300-3/4)
S-LOC 16	1160-1/2	361 (400-1/2)		1160-3/4	361 (400-3/4)
CIRCLING	1260-1	460 (500-1)	1260-1 1/2 460 (500-1 1/2)	1360-2 560 (600-2)	1380-2 580 (600-2)

REIL Rwy 9, 27 and 34	Ⓛ
MRL Rwy 9-27	Ⓛ
HIRL Rwy 16-34	Ⓛ
FAF to MAP 4.8 NM	
Knots	60 90 120 150 180
Min:Sec	4:48 3:12 2:24 1:55 1:36