

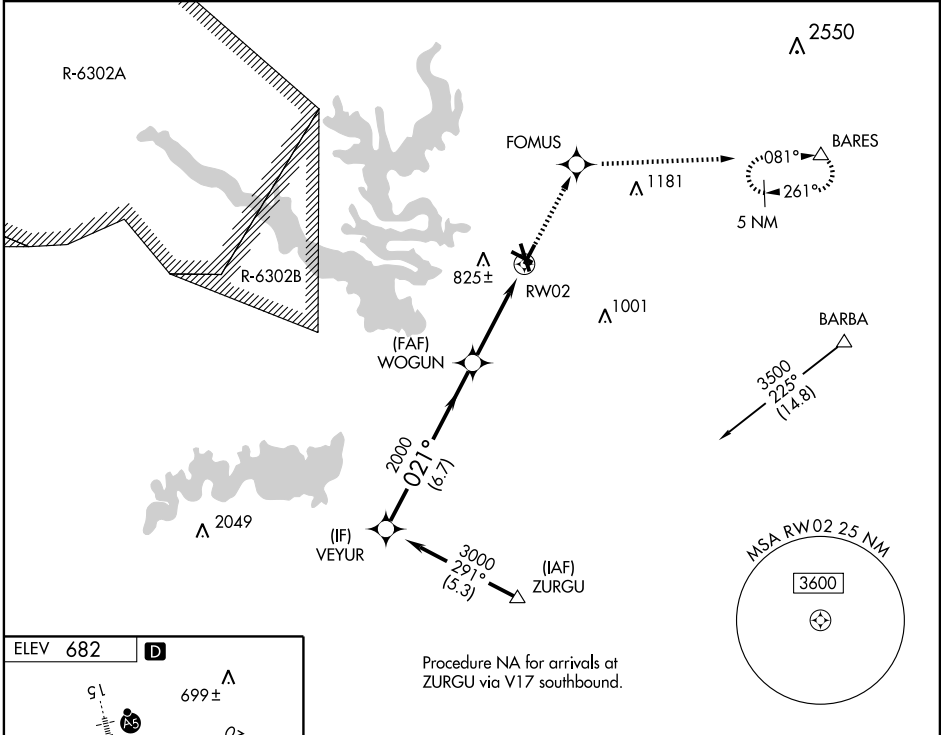
RNAV (GPS) RWY 2

TEMPLE/ DRAUGHON-MILLER CENTRAL TEXAS RGNL (TPL)

WAAS Ch 72701 W02A	APP CRS 021°	Rwy Idg TDZE Apt Elev	4740 675 682
--	------------------------	-----------------------------	---

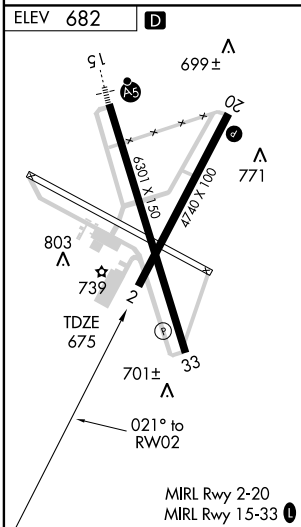
MISSED APPROACH: Climb to 3600 direct FOMUS and via 081° track to BARES and hold, continue climb-in-hold to 3600.

AWOS-3 134.975	GRAY APP CON 120.075 370.0	CLNC DEL 125.9	UNICOM 123.0 (CTAF) 0
--------------------------	--------------------------------------	--------------------------	---------------------------------



SC-3, 22 OCT 2009 to 19 NOV 2009

SC-3, 22 OCT 2009 to 19 NOV 2009



VEYUR	3600	FOMUS	TRK 081°	BARES
3000	↑	⊙	△	
Procedure Turn NA	021°			
GS 3.00°				
TCH 45				
	6.7 NM	2.9 NM	1.1 NM	
CATEGORY	A	B	C	D
LPV DA		925-1	250 (300-1)	
LNAV/VNAV DA		1145-1¾ 470 (500-1¾)		
LNAV MDA		1060-1	385 (400-1)	1060-1¼ 385 (400-1¼)
CIRCLING	1160-1¾ 478 (500-1¾)	1180-1¾ 498 (500-1¾)		1240-2 558 (600-2)

RNAV (GPS) RWY 2