

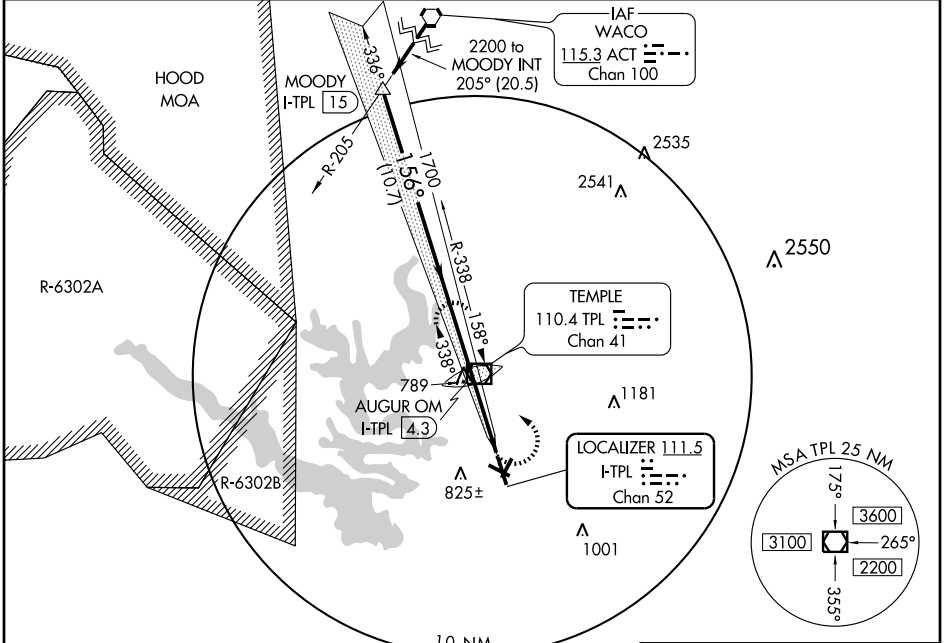
ILS RWY 15

TEMPLE/DRAUGHON-MILLER CENTRAL TEXAS RGNL (TPL)

LOC I-TPL 111.5 Chan 52	APP CRS 156°	Rwy Idg TDZE Apt Elev	6301 682 682
---	------------------------	-----------------------------	---

<p>▼ For inoperative MALSR increase S-LOC 1.5</p> <p>▲ NA Cat D 1 mile.</p>	<p>MALSR</p>	<p>MISSED APPROACH: Climb to 1300, then climbing left turn to 2200 direct TPL VOR/DME and hold.</p>
---	---------------------	--

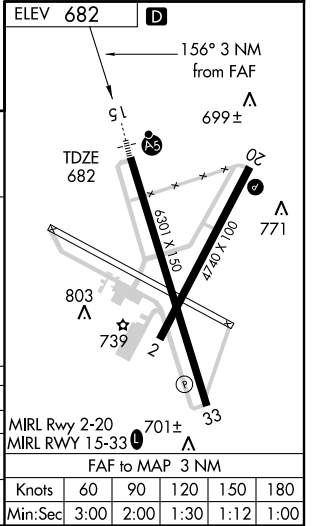
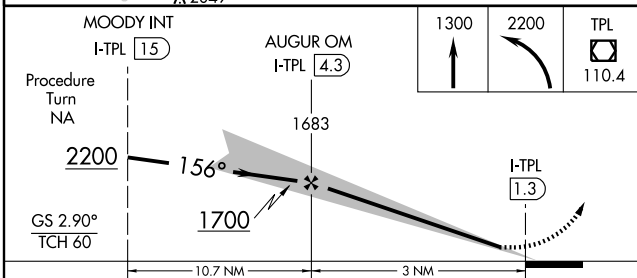
AWOS-3 134.975	GRAY APP CON 120.075 370.0	CLNC DEL 125.9	UNICOM 123.0 (CTAF) 0
--------------------------	--------------------------------------	--------------------------	--



SC-3, 22 OCT 2009 to 19 NOV 2009

SC-3, 22 OCT 2009 to 19 NOV 2009

MOODY INT I-TPL 15	AUGUR OM I-TPL 4.3	1300	2200	TPL 110.4
Procedure Turn NA	1683			



CATEGORY	A	B	C	D
S-ILS 15	882-½		200 (200-½)	
S-LOC 15	980-½		298 (300-½)	980-¾ 298 (300-¾)
CIRCLING	1140-1 458 (500-1)		1160-1½ 478 (500-1½)	1240-2 558 (600-2)

TEMPLE, TEXAS
Amdt 11 09239

TEMPLE/DRAUGHON-MILLER CENTRAL TEXAS RGNL (TPL)
31°09'N - 97°24'W

ILS RWY 15