

VOR/DME or TACAN RWY 13

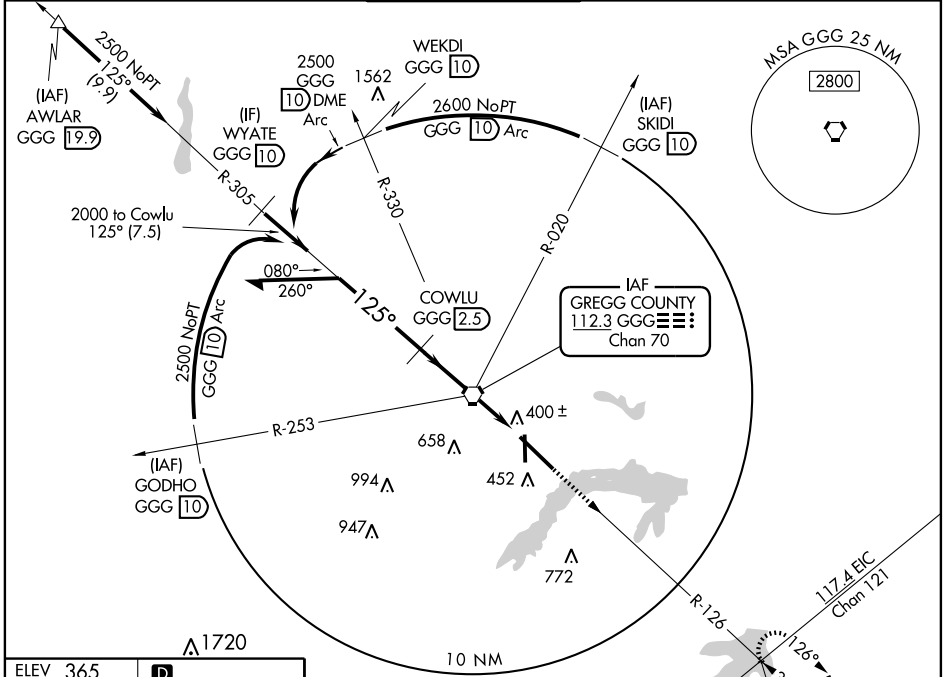
LONGVIEW/ EAST TEXAS RGNL (GGG)

VORTAC GGG 112.3 Chan 70	APP CRS 125°	Rwy Idg TDZE 358 Apt Elev 365	9200
--	------------------------	---	-------------

▼ For inoperative MALSRS, increase S-13 Cat E visibility to 1¼. When local altimeter setting not received, use Gilmer altimeter setting and increase all MDA 60 feet and visibility Cat D and E ¼ mile. VDP NA when using Gilmer altimeter setting. For inoperative MALSRS when using Gilmer altimeter setting increase S-13 Cat E visibility to 2 miles.

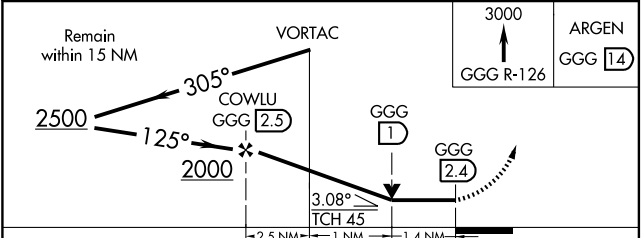
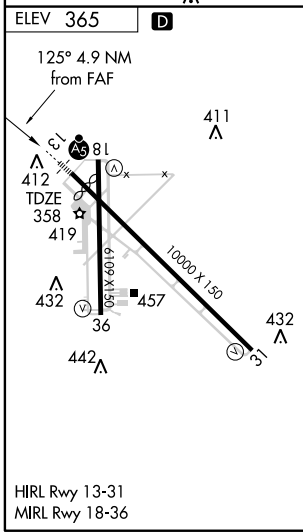
MALSRS MISSED APPROACH: Climb to 3000 via GGG R-126 to ARGEN Int/GGG 14 DME and hold.

ATIS 119.65	LONGVIEW APP CON* 118.25 270.3	EASTTEX TOWER* 119.2 (CTAF) 377.05	GND CON 121.6	UNICOM 122.95
-----------------------	--	--	-------------------------	-------------------------



SC-2, 22 OCT 2009 to 19 NOV 2009

SC-2, 22 OCT 2009 to 19 NOV 2009



CATEGORY	A	B	C	D	E
S-13	860/24 502 (500-½)		860/50 502 (500-1)		860-60 502 (500-1¼)
CIRCLING	860-1 495 (500-1)		860-1½ 495 (500-1½)	920-2 555 (600-2)	1080-2½ 715 (800-2½)