

LONGVIEW, TEXAS

AL-807 (FAA)

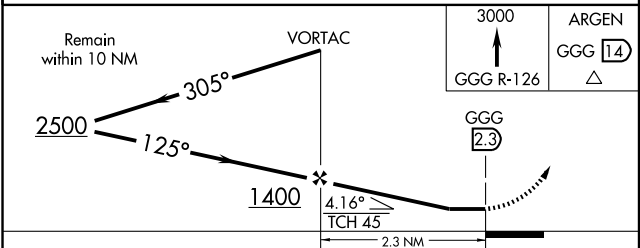
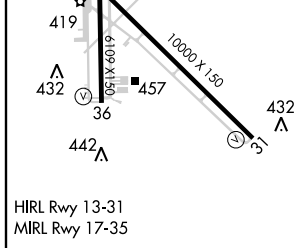
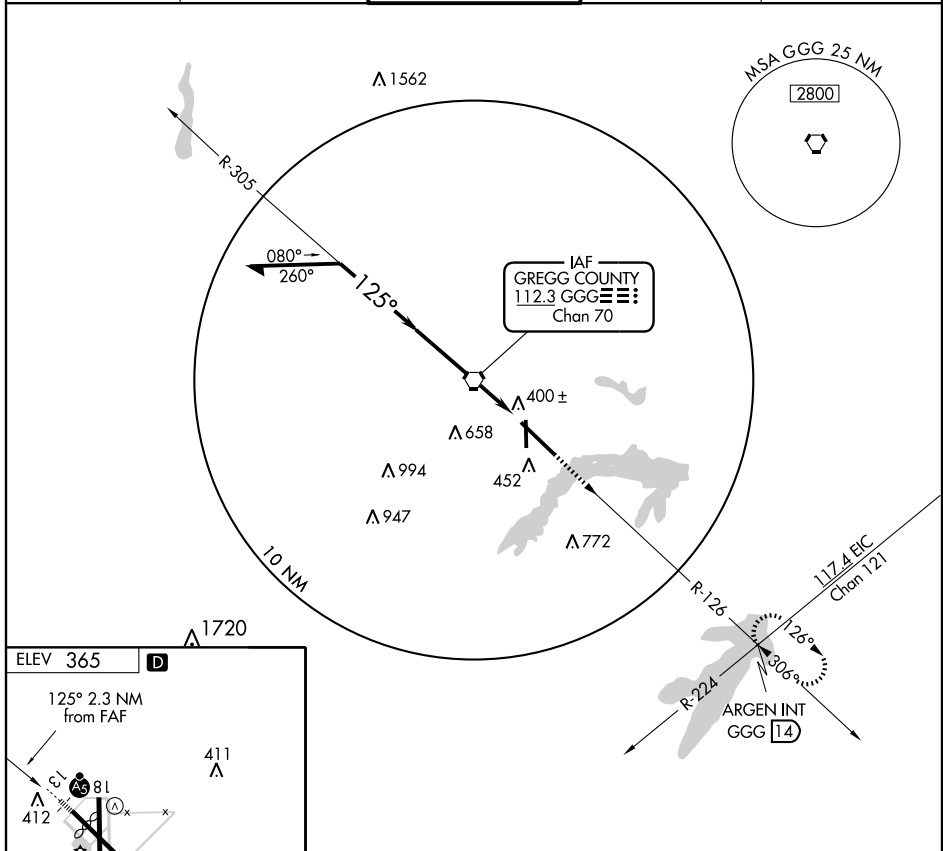
VOR-A

LONGVIEW/ EAST TEXAS RGNL (GGG)

VORTAC GGG 112.3 Chan 70	APP CRS 125°	Rwy Idg TDZE Apt Elev	N/A N/A 365
---------------------------------------	------------------------	-----------------------------	--------------------------

▼ MISSED APPROACH: Climb to 3000 via GGG VORTAC R-126 to ARGEN Int/GGG 14 DME and hold.

ATIS 119.65	LONGVIEW APP CON* 118.25 270.3	EASTEX TOWER* 119.2 (CTAF) 0377.05	GND CON 121.6	UNICOM 122.95
-----------------------	--	--	-------------------------	-------------------------



FAF to MAP 2.3 NM					
Knots	60	90	120	150	180
Min:Sec	2:18	1:32	1:09	0:55	0:46
CATEGORY	A	B	C	D	
CIRCLING	760-1 395 (400-1)	820-1 455 (500-1)	820-1½ 455 (500-1½)	920-2 555 (600-2)	

LONGVIEW, TEXAS
Orig 09015

32°23'N-94°43'W

LONGVIEW/ EAST TEXAS RGNL (GGG)
VOR-A

SC-2, 22 OCT 2009 to 19 NOV 2009

SC-2, 22 OCT 2009 to 19 NOV 2009