

RNAV (GPS) RWY 18

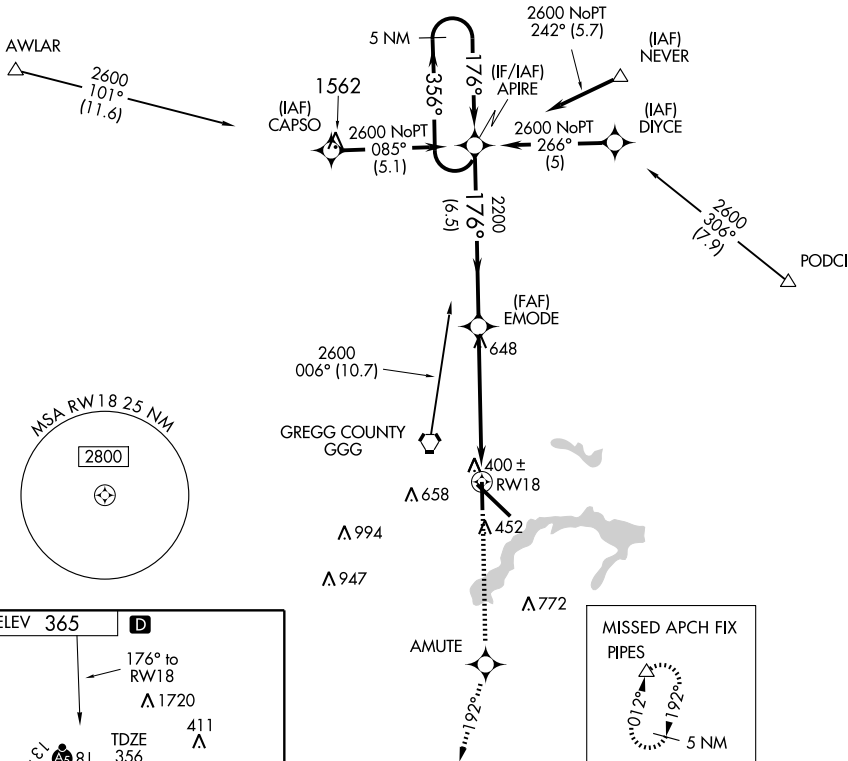
LONGVIEW/ EAST TEXAS RGNL (GGG)

APP CRS 176°	Rwy Idg 6109
	TDZE 356
	Apt Elev 365

▼ DME/DME RNP-0.3 NA. Visibility reduction by helicopters NA.
▲ VDP NA when using Gilmer altimeter setting. When local altimeter setting not received, use Gilmer altimeter setting and increase all MDA 60 feet.

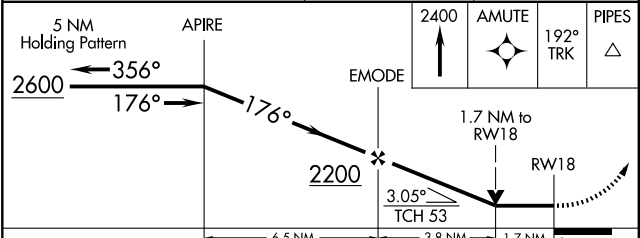
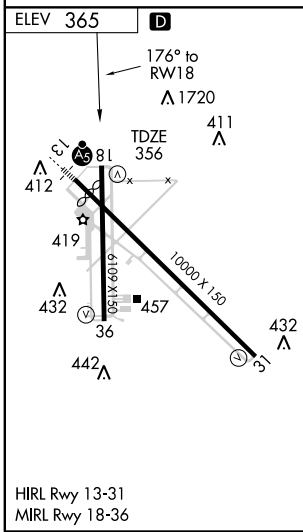
MISSED APPROACH: Climb to 2400 direct AMUTE and via 192° track to PIPES and hold.

ATIS 119.65	LONGVIEW APP CON* 118.25 270.3	EASTEX TOWER* 119.2 (CTAF) 0377.05	GND CON 121.6	UNICOM 122.95
-----------------------	--	--	-------------------------	-------------------------



SC-2, 22 OCT 2009 to 19 NOV 2009

SC-2, 22 OCT 2009 to 19 NOV 2009



CATEGORY	A	B	C	D
LNAV MDA	960-1	604 (600-1)	960-1¾ 604 (600-1¾)	960-2 604 (600-2)
CIRCLING	960-1	595 (600-1)	960-1¾ 595 (600-1¾)	960-2 595 (600-2)