

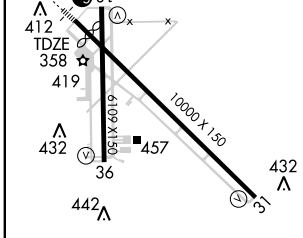
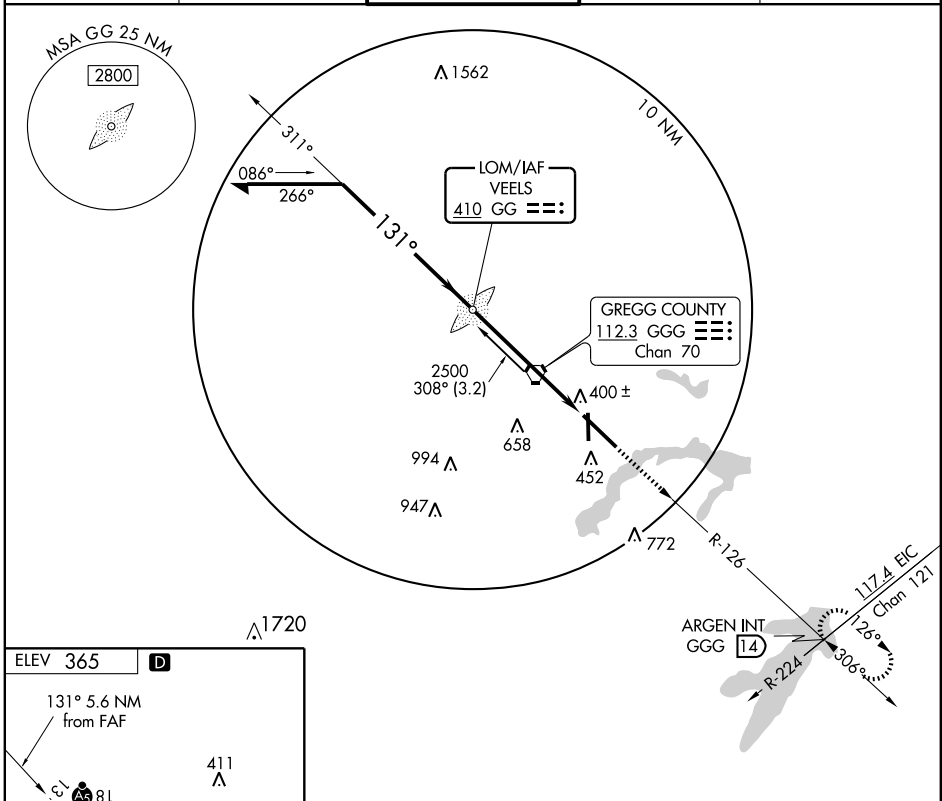
# NDB RWY 13

LONGVIEW/ EAST TEXAS RGNL (GGG)

LOM GG <b>410</b>	APP CRS <b>131°</b>	Rwy Idg <b>9200</b>
		TDZE <b>358</b>
		Apt Elev <b>365</b>

<p>▼ When local altimeter setting not received use Gilmer altimeter setting and increase all MDA 60 feet.</p>	<p>MALSR</p>	<p>MISSED APPROACH: Climb to 3000 via GGG VORTAC R-126 to ARGEN Int and hold.</p>
---	--------------	---

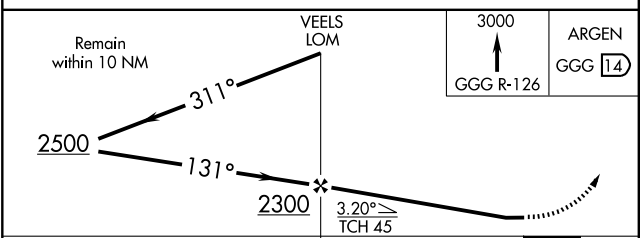
ATIS <b>119.65</b>	LONGVIEW APP CON* <b>118.25 270.3</b>	EASTEX TOWER* <b>119.2 (CTAF) 0377.05</b>	GND CON <b>121.6</b>	UNICOM <b>122.95</b>
-----------------------	--	--	-------------------------	-------------------------



HIRL Rwy 13-31  
MIRL Rwy 18-36

FAF to MAP 5.6 NM

Knots	60	90	120	150	180
Min:Sec	5:36	3:44	2:48	2:14	1:52



CATEGORY	A	B	C	D
S-13	960/40	602 (600-¾)	960/60 602 (600-1¼)	960-1¾ 602 (600-1¾)
CIRCLING	960-1	595 (600-1)	960-1¾ 595 (600-1¾)	960-2 595 (600-2)

SC-2, 22 OCT 2009 to 19 NOV 2009

SC-2, 22 OCT 2009 to 19 NOV 2009