

ILS or LOC RWY 13

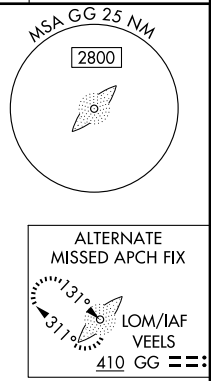
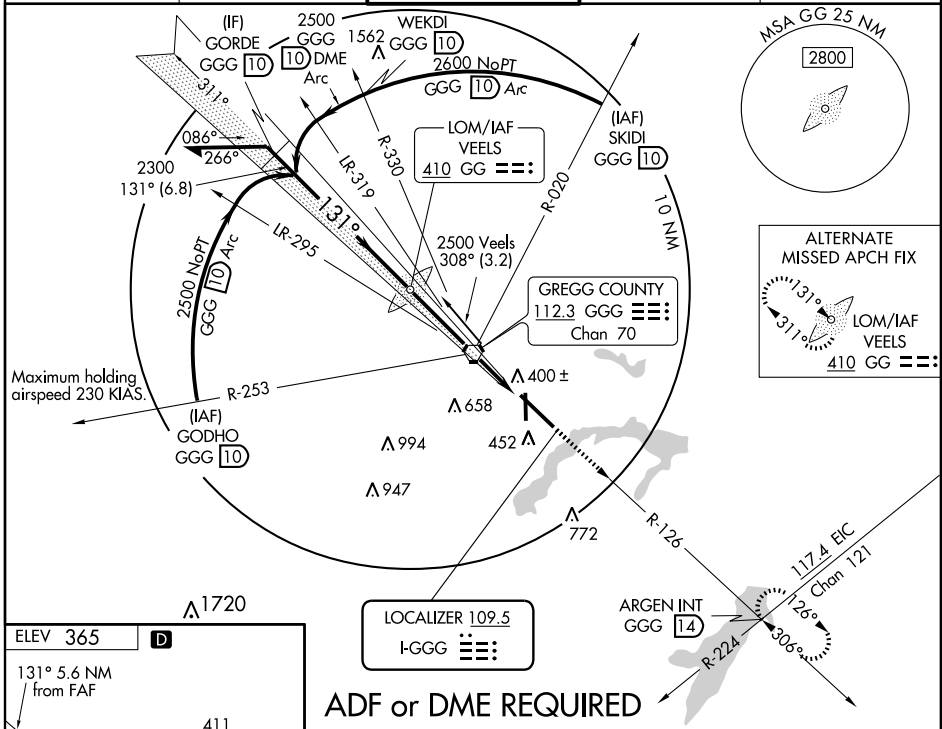
LONGVIEW/ EAST TEXAS RGNL (GGG)

LOC I-GGG 109.5	APP CRS 131°	Rwy Idg 9200
		TDZE 358
		Apt Elev 365

▼ For inoperative MALS, increase S-ILS-13 Cat E visibility to RVR 4000, S-LOC-13 Cat E visibility to 1¾. When local altimeter setting not received, use Gilmer altimeter setting and increase all DA 59 feet, all MDA 60 feet and visibility S-LOC 13 and circling Cat D, E ¼ mile. For inoperative MALS when using Gilmer altimeter setting, increase visibility S-ILS 13 all Cats to RVR 5000 and S-LOC 13 Cat E to 2. *RVR 1800 authorized with the use of FD or AP or HUD to DA.

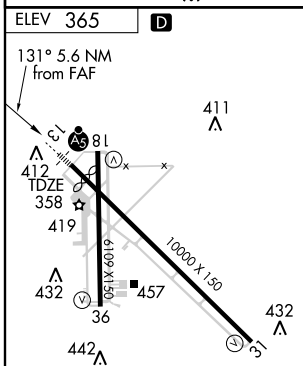
MALS 	MISSED APPROACH: Climb to 3000 via GGG VORTAC R-126 to ARGEN Int/GGG 14 DME and hold.
----------	---------------------------------------------------------------------------------------------------

ATIS 119.65	LONGVIEW APP CON* 118.25 270.3	EASTEX TOWER* 119.2 (CTAF) 0377.05	GND CON 121.6	UNICOM 122.95
-----------------------	------------------------------------------	----------------------------------------------	-------------------------	-------------------------

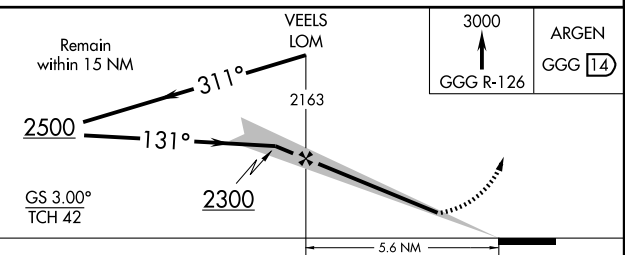


SC-2, 22 OCT 2009 to 19 NOV 2009

SC-2, 22 OCT 2009 to 19 NOV 2009



ADF or DME REQUIRED



FAF to MAP 5.6 NM					
Knots	60	90	120	150	180
Min:Sec	5:36	3:44	2:48	2:14	1:52

CATEGORY	A	B	C	D	E
S-ILS 13	*558/24 200 (200-½)				558/24 200 (200-½)
S-LOC 13	860/24	502 (500-½)	860/50	502 (500-1)	860/60 502 (500-1½)
CIRCLING	860-1	495 (500-1)	860-1½ 495 (500-1½)	920-2 555 (600-2)	1080-2½ 715 (800-2½)